



## **Dramatic Four Bedroom Adams Contemporary**

6 Country Road, Adams, MA 01220  
\$309,900

**Contemporary Open Living** on the **First Floor** within the **Great Room** blends flawlessly with an ingenious floor plan that offers an exceptionally spacious upper level **Master Bedroom Suite** with its own gorgeous new **Master Bath** featuring step-in shower with two shower heads, jet tub for lounging and unwinding after a busy day or in from the slopes, and double vanity sinks. The high ceilings in the **Great Room** give dramatic effect to the spaces for the carpeted **Living area**, tiled floor **Dining and Gourmet Kitchen** featuring granite counters, island with seating, and stainless appliances. Also on the **First Floor** are two spacious **Bedrooms** and **Full Bath**. The **Lower Level** living space includes the comfortable **Family Room/Den** with **Fireplace, Built-in Bookcases** and **Cabinetry**, another comfortable **Bedroom, Three Quarter Bath, Office, Laundry/Utility Room** and **One Car Garage**. Plenty of privacy to be had on the ½ acre parcel or deck. Views to **Mt. Greylock**.

Harsch Associates \* 311 Main Street \* Williamstown, MA 01267 \* (413) 458-5000

[www.harschrealestate.com](http://www.harschrealestate.com)

**First Floor:**

Great Room: 19'3" x 27'; Cathedral Ceiling, Ceiling Light and Fan, Recessed Lighting

Living Area: Wall-to-wall Carpet

Dining and Kitchen Area: Ceramic Tile Floor; Slider to 20' x 12' Deck; Granite Countertops; Double Bowl Stainless Steel Sink with Disposal; Kenmore Elite Dishwasher; Kenmore Glass Top Electric Range; Kenmore Refrigerator/Freezer; Kenmore Elite Microwave and Exhaust Fan; Contemporary Lighting over Sink Area

Full Bath: Ceramic Tile Floor; One Piece Fiberglass Tub and Shower; Double Bowl Corian Vanity Sink; Built-in Linen Cabinet

Bedroom: 15' x 11' 6"; Wall-to-wall Carpet; Double Sized Closet; Ceiling Light and Fan

Bedroom: 15' x 11' 6"; Wall-to-wall carpet; Double Closet; Ceiling Light and Fan

Mid-Level Entry: Ceramic Tile Floor

**Second Floor:**

Master Bedroom Suite: 15'8" x 16'4" plus 7'3" x 6'; Ceiling Light and Fan; Wall-to-wall Carpet; Three Closets

Master Bathroom: Ceramic Tile Floor; Ceramic Tile Surround; Jet Tub; Step in Shower with Hand Wand and Rain Shower Head; Double Bowl Vanity Sink with Corian Countertop

**Lower Level:**

Bedroom: 12'6" x 13'; Closet & Wall-to-wall Carpet

Family Room: 16'7" x 16'11"; Wood Burning Fireplace with Glass Doors; Wall-to-wall Carpet; Built-in Cabinetry & Shelving

Laundry & Utility Room: Washer/Dryer Hook-ups, Weil-McLain Boiler, 3 Zones; Booster Pump for Water Pressure

3/4 Bath

Office/Storage Room: 10' x 6'

**GENERAL INFORMATION**

Year Built: 1995		Foundation: Poured Concrete		Total Sq. Ft: 2,022 per appraiser	
Floors: Carpet, Ceramic Tile		Siding: Vinyl		Roof: Asphalt/Fiberglass	
Water: Public	Sewer: Public	Heat: Oil	Hot water: Tankless off boiler		
Zoning: Residential		Possession: At Closing		Driveway: Paved	
Assessment: \$223,700		Tax Year: 2013		Taxes: \$3,861.00	
Elementary School(s): CT Plunkett Elementary			Middle/High School(s): Adams Memorial/Hoosac		
Book: 897	Page: 838	Map: 232		Block: 13.3	
Lead Paint: No	Smoke/CO Detectors: Yes	Exterior Lighting: Yes		Cable TV: Yes	

**DISCLOSURE:** PROSPECTIVE BUYERS ARE ADVISED THAT HARSCH ASSOCIATES IS SERVING THE SELLER IN A FACILITATION CAPACITY. FOR FURTHER INFORMATION ON LICENSEE'S DUTIES AND RESPONSIBILITIES REFER TO DISCLOSURE FORM. THE INFORMATION PROVIDED BY LICENSEE WHETHER IN THIS DOCUMENT OR ORALLY IS SUBJECT TO POSSIBLE ERRORS OR OMISSIONS AND WHILE BROKER & LICENSEE MAKE EVERY REASONABLE EFFORT TO INSURE THE ACCURACY OF ALL INFORMATION, NO GUARANTEES OR WARRANTIES EITHER EXPRESS OR IMPLIED ARE MADE AS TO ANY INFORMATION PROVIDED ON REAL PROPERTY, MARKET CONDITIONS OR ANY ASPECT OF A TRANSACTION WITH LICENSEE OR BROKERAGE FIRM. THE LICENSEES INVOLVED ARE NOT RESPONSIBLE FOR MISSTATEMENTS OF FACTS, PRIOR SALE, AND CHANGE OF PRICE OR WITHDRAWAL FROM THE MARKET. ALL PROSPECTIVE BUYERS ARE ADVISED TO CAREFULLY VERIFY TO THEIR SATISFACTION ALL INFORMATION OF MATERIAL IMPORTANCE TO THEM. LICENSEE HAS NOT MADE ANY REPRESENTATIONS OR WARRANTIES AND HAS NOT VERIFIED AND WILL NOT VERIFY THE ACCURACY OF SELLER'S STATEMENTS. MEASUREMENTS ARE APPROXIMATE.

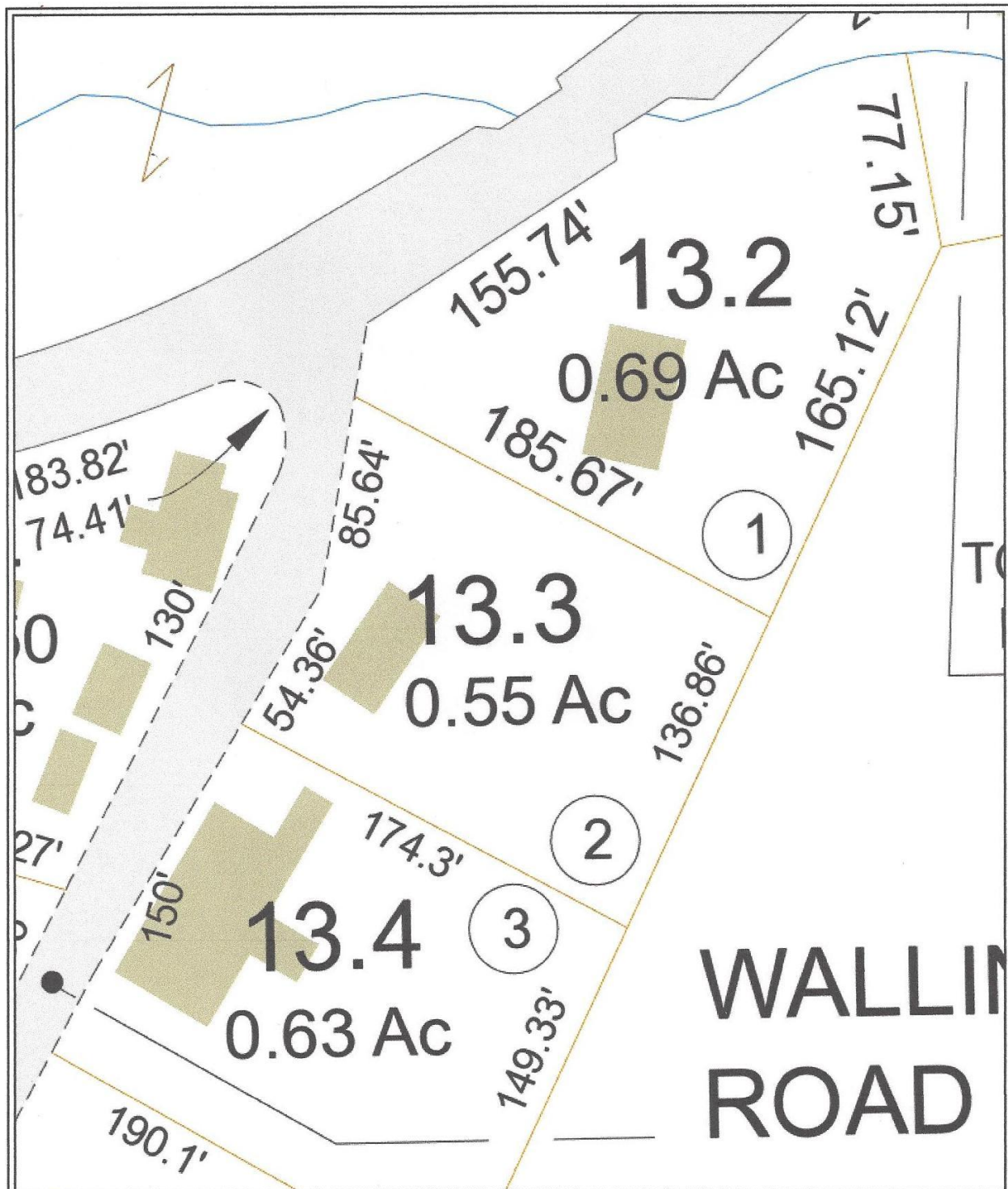
Harsch Associates \* 311 Main Street \* Williamstown, MA 01267 \* (413) 458-5000

[www.harschrealestate.com](http://www.harschrealestate.com)





Harsch Associates \* 311 Main Street \* Williamstown, MA 01267 \* (413) 458-5000  
[www.harschrealestate.com](http://www.harschrealestate.com)



6 Country Road  
Adams, MA  
1 Inch = 55 Feet  
September 07, 2013



Data shown on this map is provided for planning and informational purposes only. The municipality and CAI Technologies are not responsible for any use for other purposes or misuse or misrepresentation of this map.

[www.cai-tech.com](http://www.cai-tech.com)

CAI Technologies  
Professional Land Surveyors

Harsch Associates \* 311 Main Street \* Williamstown, MA 01267 \* (413) 458-5000

[www.harschrealestate.com](http://www.harschrealestate.com)