

-100°58' -100°57' -100°56' -100°55' -100°54' -100°53' -100°52' -100°51' -100°50' -100°49' -100°48' -100°47' -100°46' -100°45' -100°44' -100°43' -100°42' -100°41' -100°40' -100°39' -100°38' -100°37' -100°36' -100°35' -100°34' -100°33' -100°32' -100°31' -100°30' -100°29' -100°28' -100°27' -100°26' -100°25' -100°24'

HALL COUNTY TEXAS

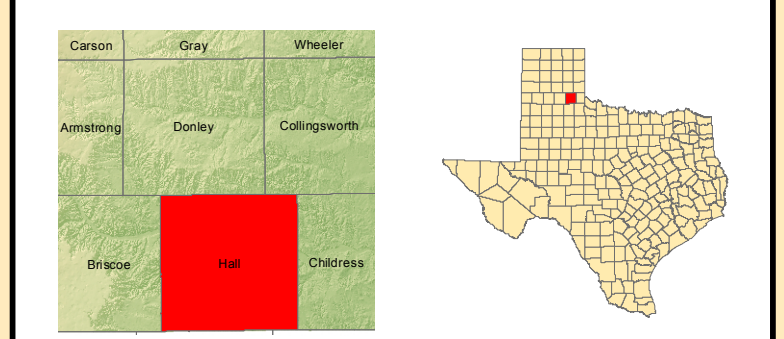
GENERAL ROADS MAP

Road Legend

- Interstate Highway
- US Highway
- State Highway
- FM/Ranch/Loop Road
- County Road
- Private

N
W E
S

0 1.25 2.5 5 7.5 10
Miles



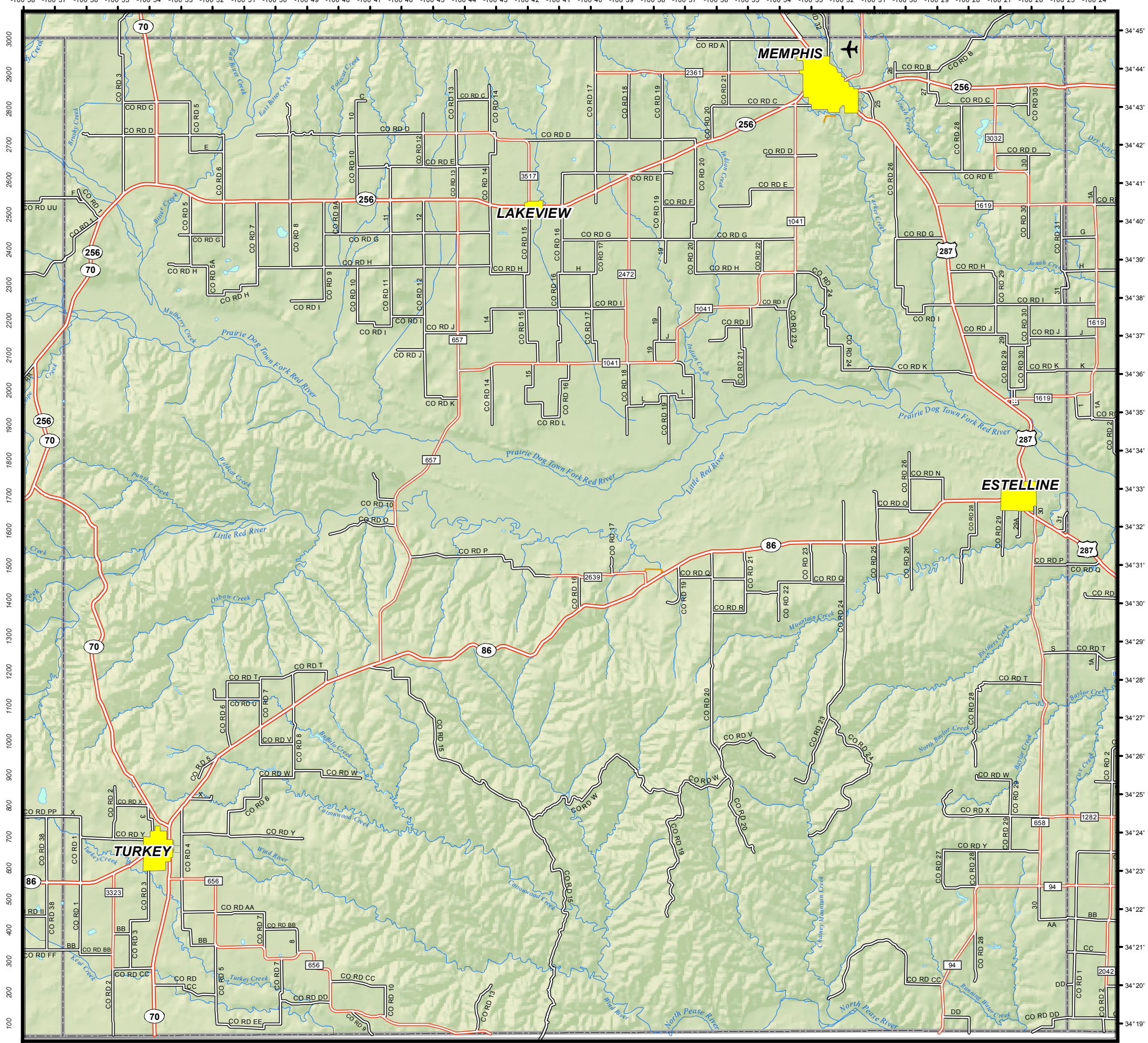
In general, address numbers INCREASE going to the North and East at approximately one mile per one hundred block. As address numbers increase, EVEN addresses will be on the RIGHT, and ODD addresses will be on the LEFT.

This map is produced to aid emergency service providers in locating 9-1-1 calls. The information on the map, having been obtained from a variety of sources, is believed to be accurate. Please report corrections, omissions and changes to the Panhandle Regional Planning Commission's 9-1-1 network at www.panhandlemaps.com



March 2011

Approximate West/East Address Block Range



12100 12200 12300 12400 12500 12600 12700 12800 12900 13000 13100 13200 13300 13400 13500 13600 13700 13800 13900 14000 14100 14200 14300 14400 14500 14600 14700 14800 14900 15000
Approximate West/East Address Block Range