



40 Acres Winston County – Canyon Country with a stream and a green field – \$40,000.00

Beth Maynor Young

Beth@CyprusPartners.com

205-533-1513

Spence Maynor

Spence@CyprusPartners.com

205-500-0437



40 Acres of beautiful Winston County canyon country for hiking, camping and hunting - with a stream flowing through the middle. Camp this winter under the bluffs and watch the flow of wildlife. The view in the photograph above is the whole property from one ridge to the next. The land is sloping toward the stream, through large hemlocks and beech trees, but very easy to hike. Huge bluffs are banked with hemlock, big leaf magnolia, mountain laurel and ferns. The entrance is through a locked timber company gate. The access road to the green field and entrance to the property is not deeded. There are four wheeler trails on the east side of the stream along with a good cabin site.





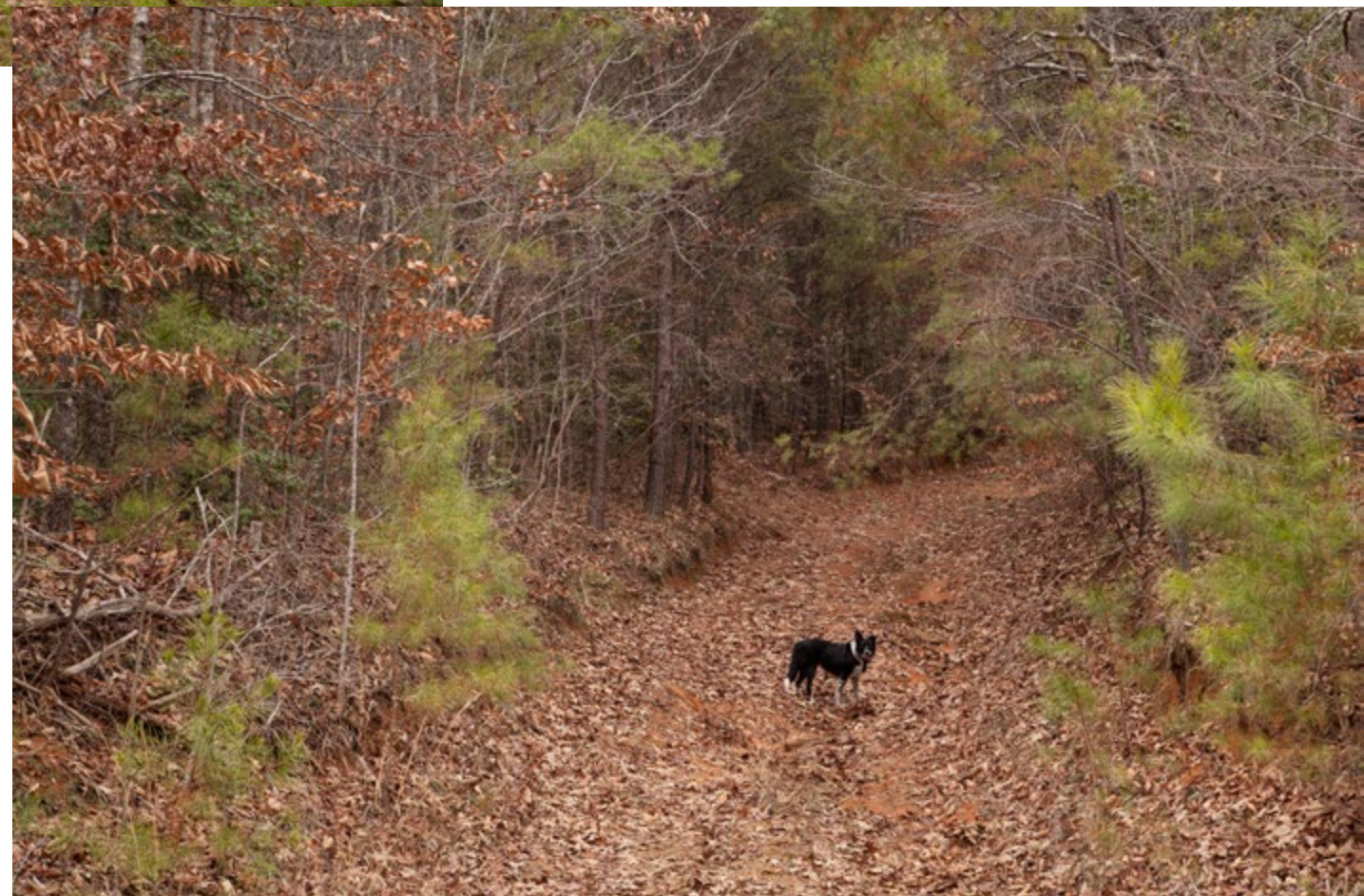
Four wheeler trails throughout the east side of the property and a level site (right) for a cabin in the woods. Very Private.







Road (not deeded) with Cooper the border collie leads down to the green field. The tract is very private and appears to be surrounded by large corporate timber lands.





Hemlock trees on the west side of the creek.



Bluffs on the west side of the creek.







This 40 acre tract is an unusually beautiful place for hunting alone, although there are signs of some very large deer. It is a really nice preserve in the woods for hiking, camping, exploring and enjoying wildlife. The stream has some privet issues as many streams in the south now do, but they are manageable. The locked gate and undeeded easement will insure privacy.

Beth M. Young
Spence Maynor

Beth@CyprusPartners.com
Spence@CyprusPartners.com

205-533-1513
205-500-0437