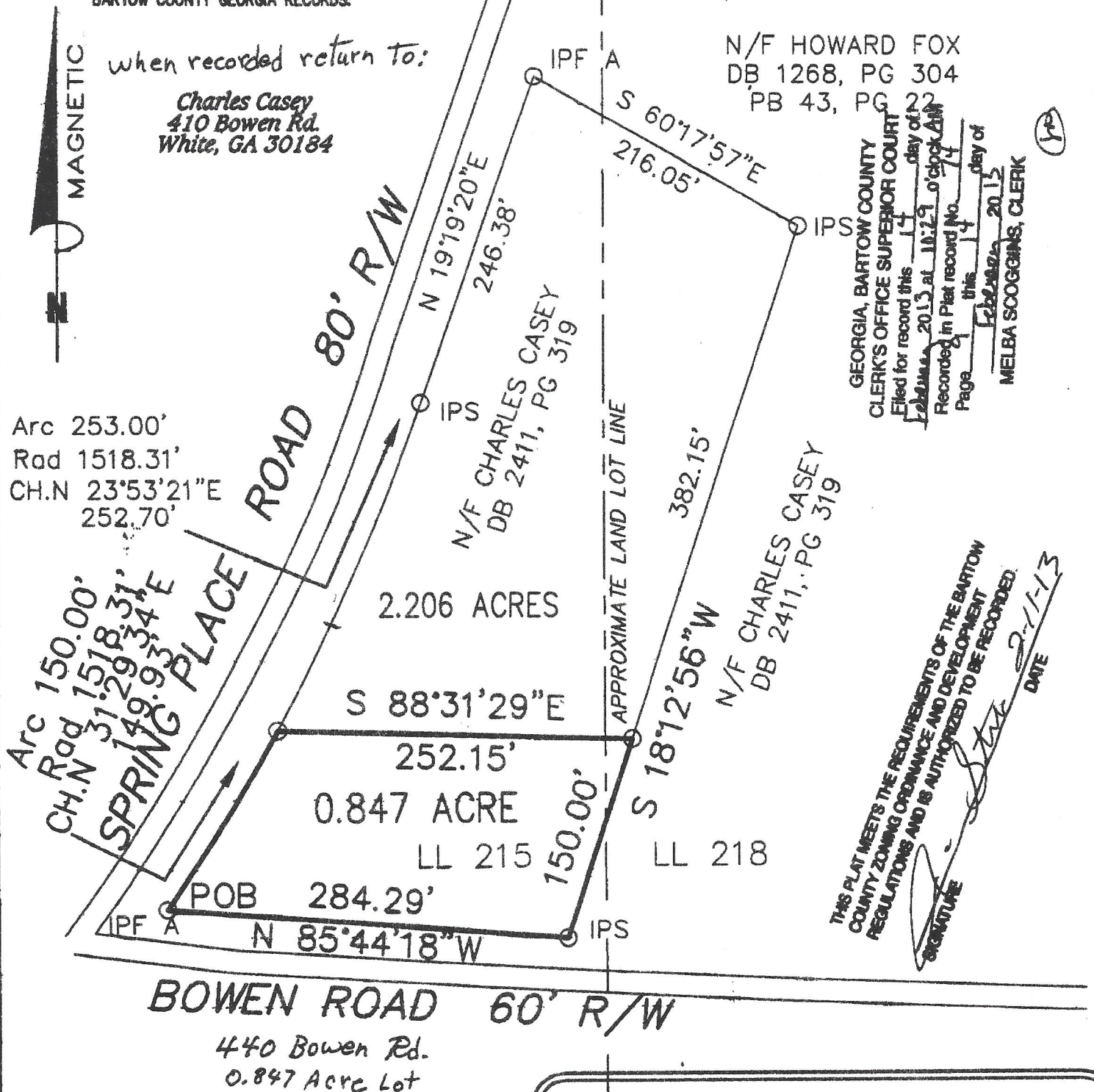


**\*\*SURVEYOR'S CERTIFICATION\*\***

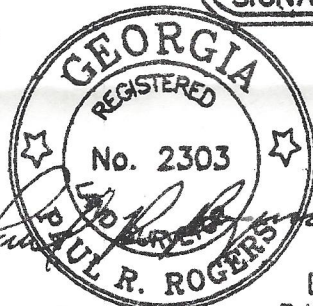
It is hereby certified that this plat is true and correct and was prepared from an actual survey by me or under my supervision; that all monuments shown thereon actually exist and their size, type, and shape are correctly shown. The field data upon which this plat is based was collected using a 5 second electronic total station theodolite and has a closure precision of one foot in 28,000 feet and angular closure of 06 seconds per angle point, and was adjusted using the compass rule. This plat has been calculated for closure and found to be accurate within one foot in 100,000 feet.

REFERENCE: PLAT FOR CHARLES CASEY AND MAMIE CASEY  
BY RHODES ENGINEERING OF 3.053 ACRES  
DATED 9/25/2012 AND RECORDED IN THE  
BARTOW COUNTY GEORGIA RECORDS.



**\*\*LEGEND\*\***

IPS IRON PIN SET  
IPF IRON PIN FOUND  
IPF A 1/2" REBAR FOUND  
OT OPEN TOP PIPE  
CT CRIMP TOP PIPE  
CMF CONCRETE MONUMENT FOUND  
FC FENCE CORNER  
—X— FENCE  
LL LAND LOT  
CL CENTERLINE  
R/W RIGHT-OF-WAY  
N/F NOW OR FORMERLY  
DB DEED BOOK  
PB PLAT BOOK  
POB POINT OF BEGINNING  
Rad RADIUS  
Ch CHORD  
PP POWER POLE  
SP SERVICE POLE  
LP LAMP POLE  
OHUL OVERHEAD UTILITY LINE



THIS PLAT MEETS THE REQUIREMENTS OF THE  
BARTOW COUNTY ZONING ORDINANCE AND  
DEVELOPEMENT REGULATIONS AND IS AUTHORIZED  
TO BE RECORDED.

SIGNATURE

DATE

SURVEY FOR  
**CHARLES L. CASEY**  
AND  
**MAMIE CASEY**

LOCATED IN LAND LOTS 215 AND 218  
5th DISTRICT, 3rd SECTION  
BARTOW COUNTY, GEORGIA

DATE OF ORIGINAL FIELDWORK: JUNE 17, 2009  
DATE OF ADDITIONAL FIELDWORK: SEPT.25, 2012  
DATE OF PLAT: NOV.27, 2012

JOB NO. 10107

100 0 100 200



Scale 1" = 100

**RHODES ENGINEERING SERVICES, INC**  
CIVIL ENGINEERS AND LAND SURVEYORS  
646 HENDERSON DRIVE, SUITE 2  
CARTERSVILLE, GA 30120  
PHONE 770-386-7616 FAX 770-386-7617