

Mobile: 601.347.3622
ariser@4cornerprop.com
www.mslandpro.com



Call Alex Today!
Office: 601.952.2828
Fax: 601.952.2829

- 186 Surveyed Acres in Hinds County
- Brand New 3BR/2BA Custom Clayton Modular Home
- Food Plots In Place w/ 1st Class Deer Stands and Feeders
- Managed for Outstanding Whitetail and Turkey!
- Mature Hardwoods
- Brand New Storage Building
- Beautiful Pond



186 ACRES IN HINDS COUNTY

Includes 1st Class Deer Stands, Camp House, and Much More!!

\$615,000



YOU WILL NOT FIND ANOTHER LIKE THIS..... This is the ideal hunting and recreational tract in Hinds County. The tract includes a beautiful custom Clayton Home that includes 3 bedrooms and 2 baths with laundry room. This area is known for its mass number of Trophy Bucks! This property also features frontage on the Tallahala Creek making it a perfect travel corridor for Monster Bucks. There are established food plots throughout the property with stands in place. This property is located in the ideal area only having you out of your office in Jackson and being in the stand within 30 minutes. For your Louisiana buyers, this property is only 10 minutes from I-55. Come check out this beautiful tract. The only way to appreciate it is to see it! Call today for your very own private showing!



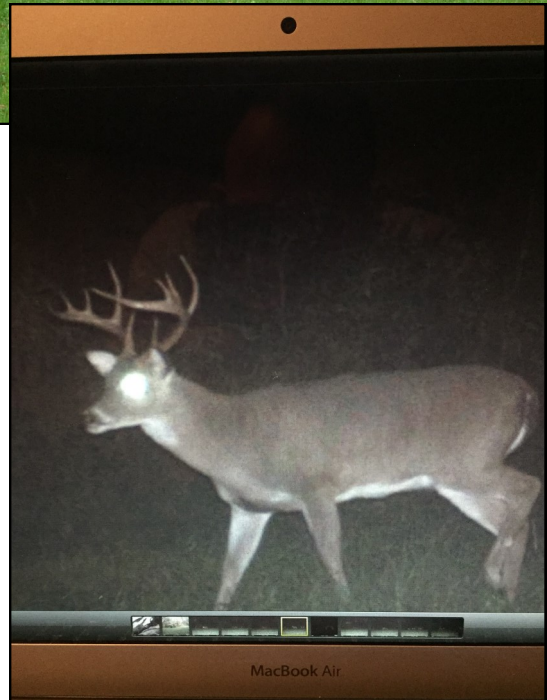
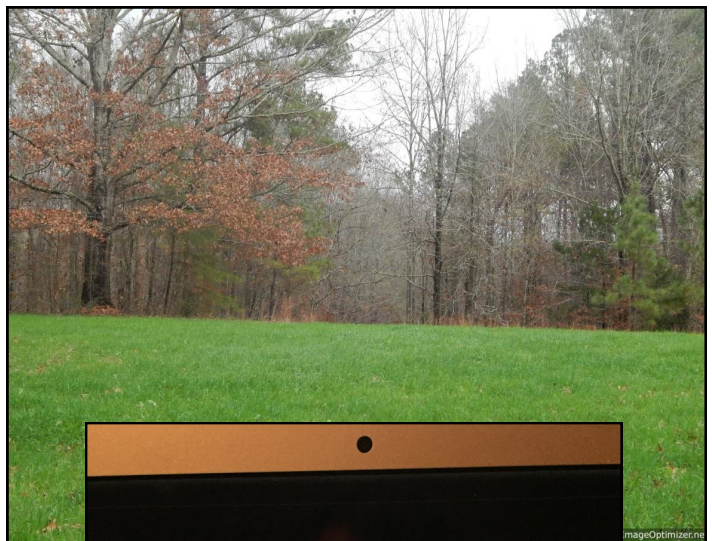
Alex Riser
Certified Land Specialist
4 Corner Properties, LLC
855 S. Pear Orchard Rd. Ste. 401
Ridgeland, MS 39157





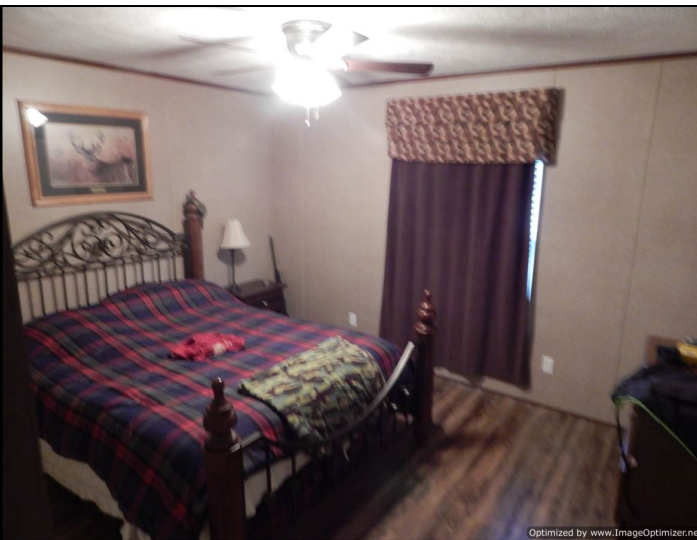
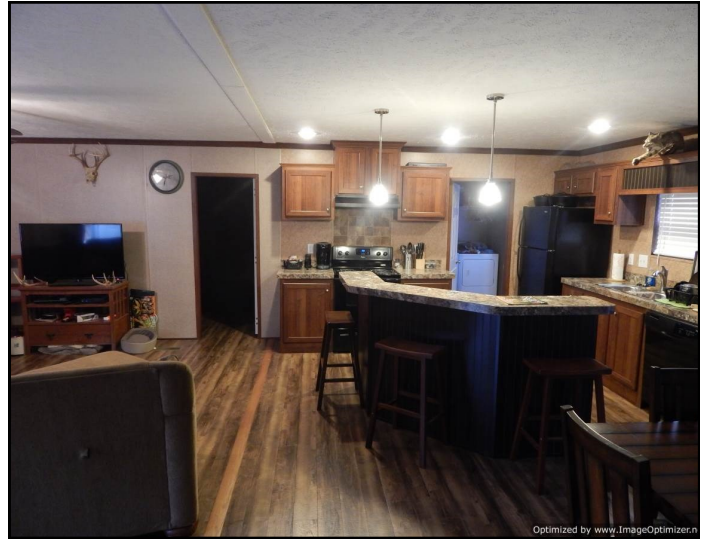
Alex Riser, CLS
4 Corner Properties, LLC
855 S. Pear Orchard Rd. Ste. 401
Ridgeland, MS 39157
www.mslandpro.com





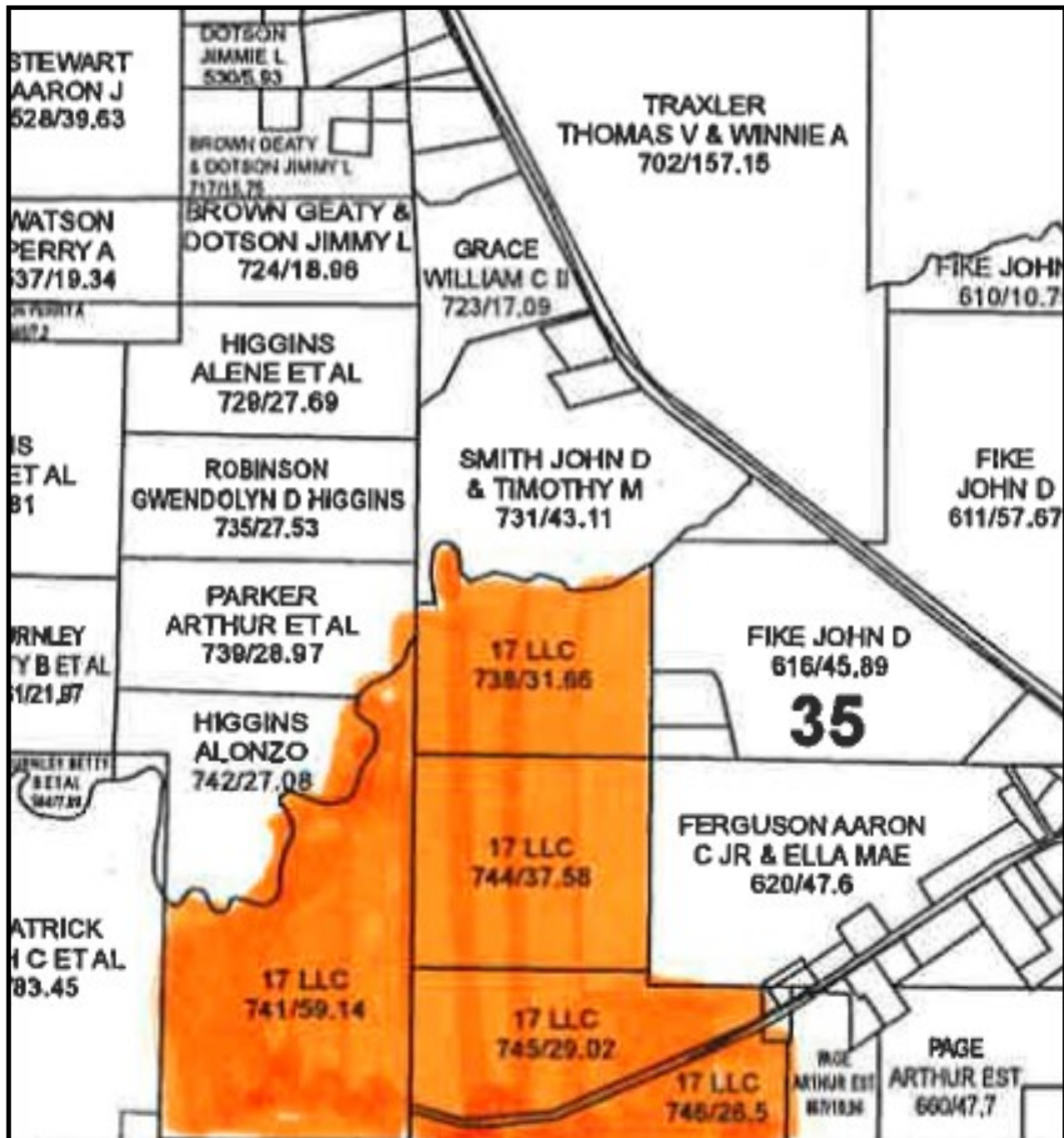
Alex Riser, CLS
4 Corner Properties, LLC
855 S. Pear Orchard Rd. Ste. 401
Ridgeland, MS 39157
www.mslandpro.com





Alex Riser, CLS
4 Corner Properties, LLC
855 S. Pear Orchard Rd. Ste. 401
Ridgeland, MS 39157
www.mslandpro.com



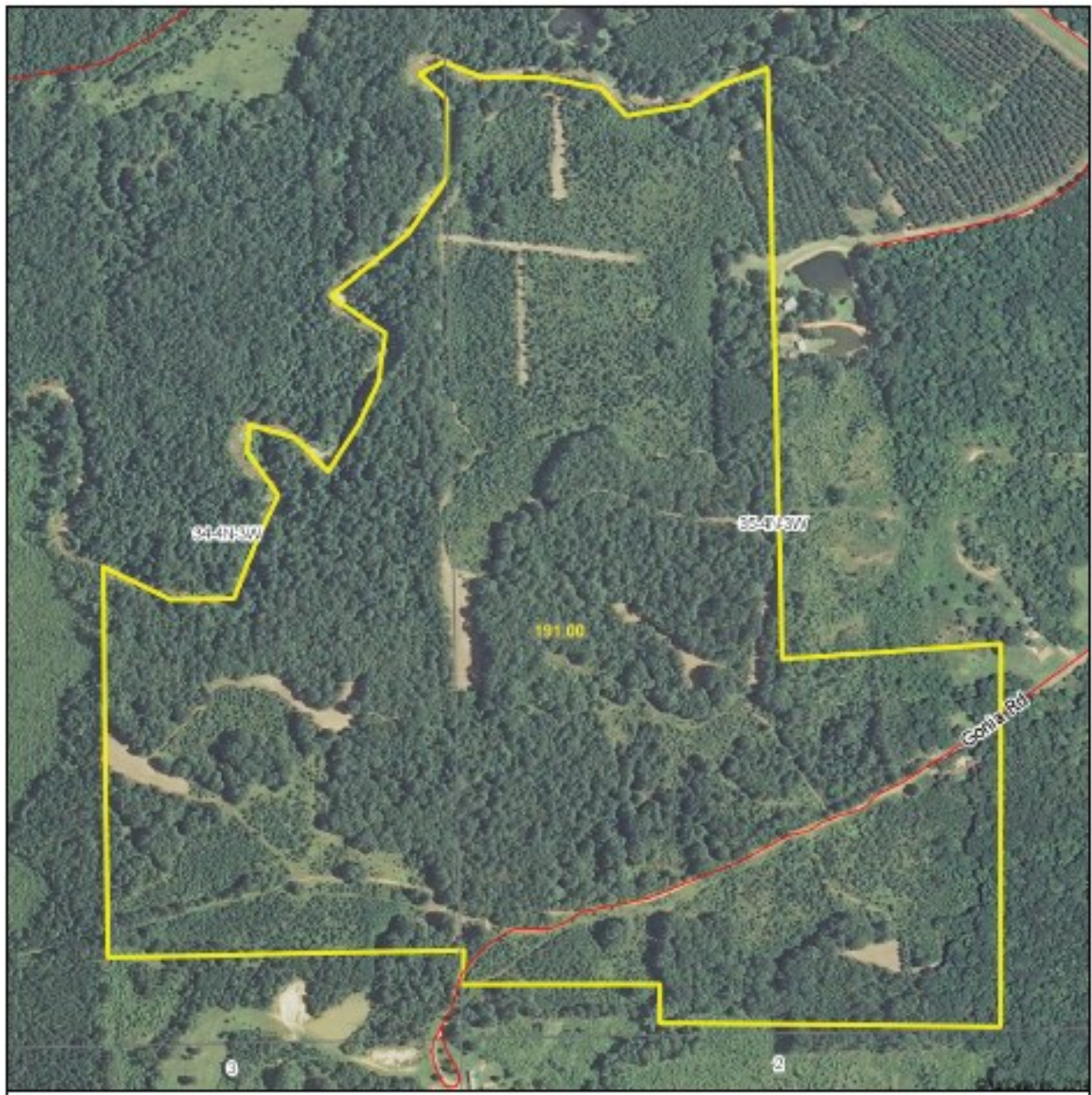


Ownership Map



Alex Riser, CLS
 4 Corner Properties, LLC
 855 S. Pear Orchard Rd. Ste. 401
 Ridgeland, MS 39157
www.mslandpro.com



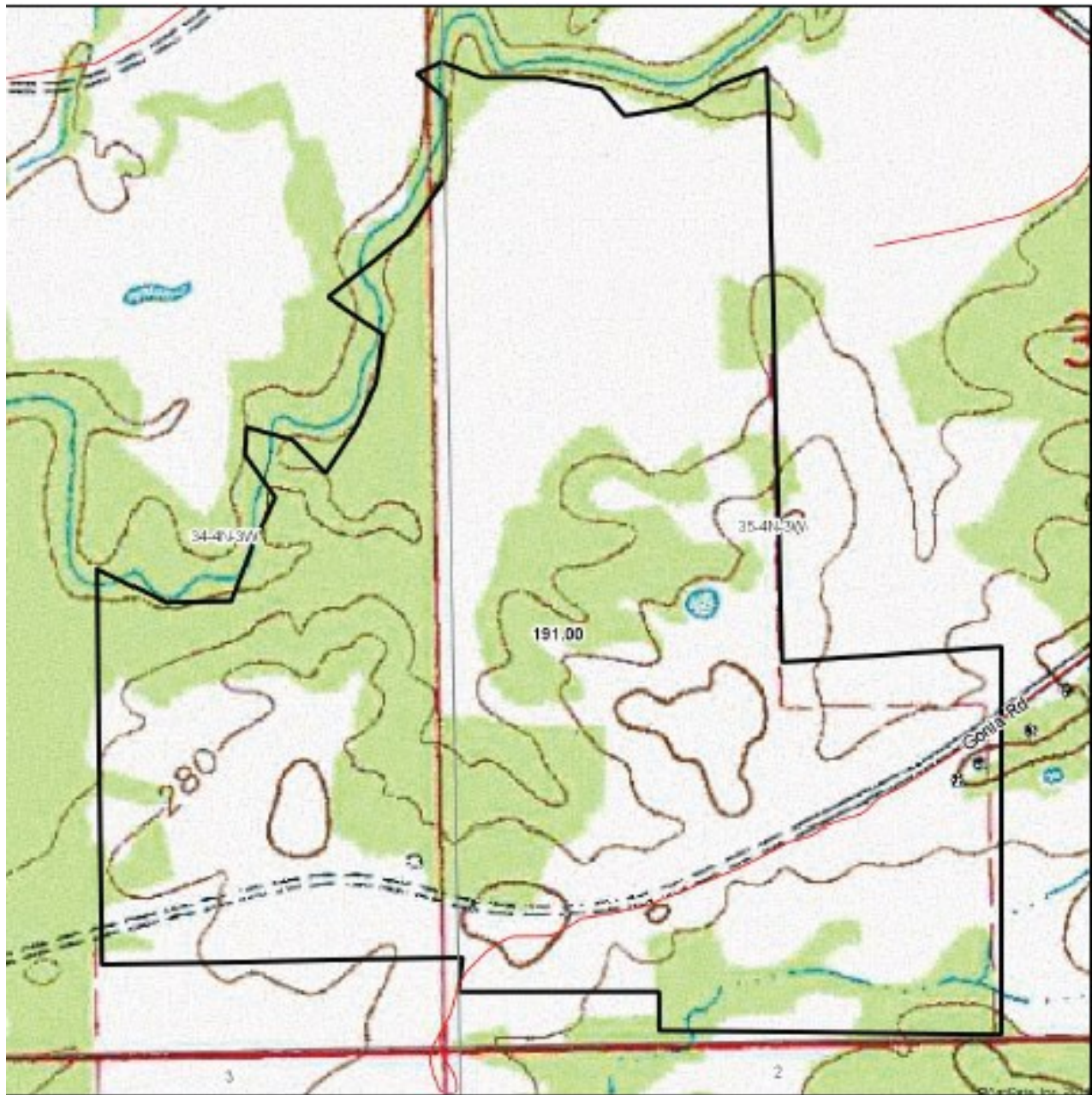


Aerial Map



Alex Riser, CLS
4 Corner Properties, LLC
855 S. Pear Orchard Rd. Ste. 401
Ridgeland, MS 39157
www.mslandpro.com



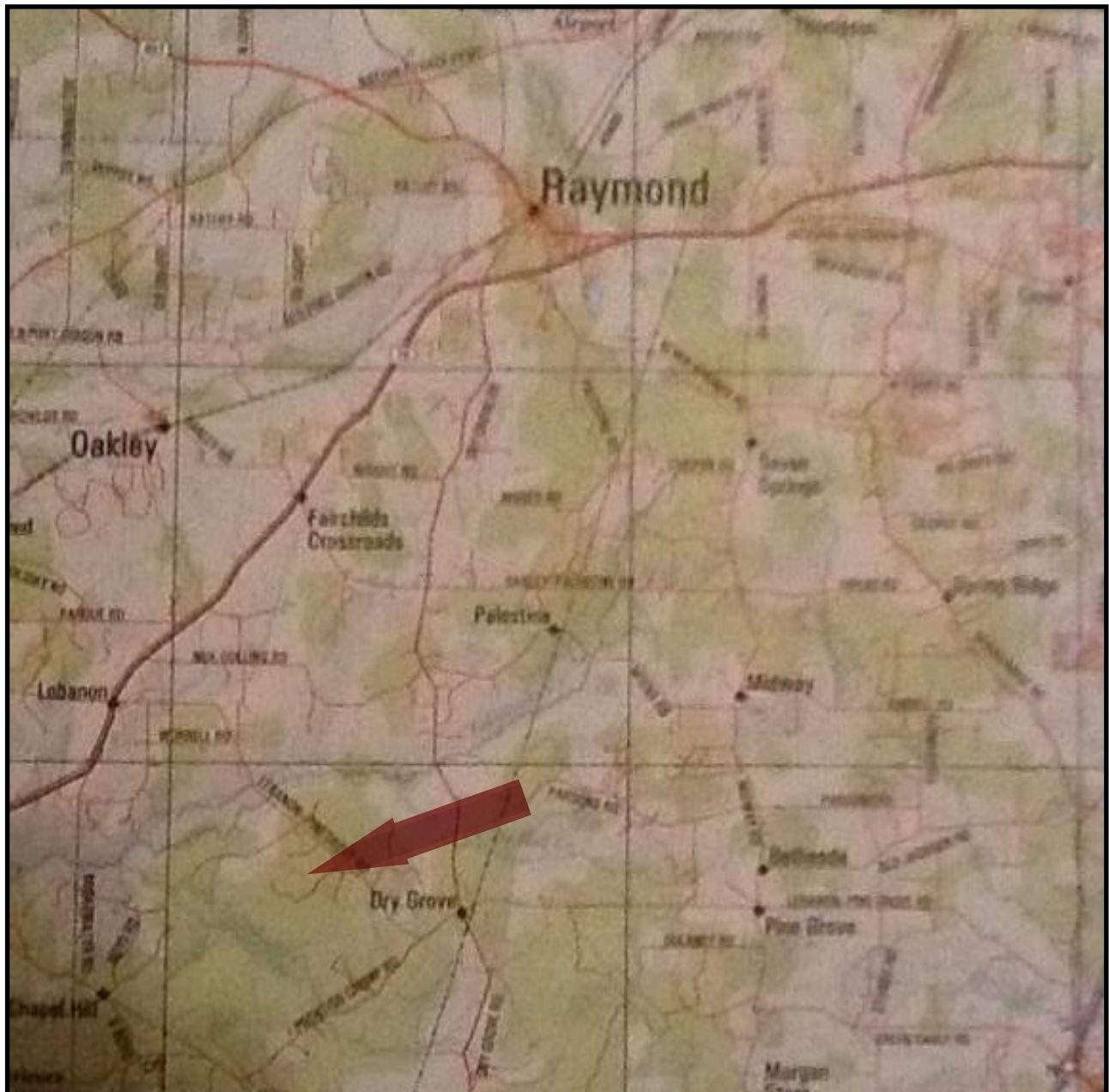


Topo Map



Alex Riser, CLS
4 Corner Properties, LLC
855 S. Pear Orchard Rd. Ste. 401
Ridgeland, MS 39157
www.mslandpro.com





Directional Map

Directions: At Exit 40A, take HWY 18 West towards Raymond. On HWY 18 Drive 18.1 miles then turn left onto Lebanon Pinegrove Rd. Drive 3.2 miles and turn right onto Gonia Rd. Drive to the end of Gonia Rd and you will enter onto the property.



Alex Riser, CLS
4 Corner Properties, LLC
855 S. Pear Orchard Rd. Ste. 401
Ridgeland, MS 39157
www.mslandpro.com

