

PRIVATE 60 ACRE FARM

1602 COUNTRY RD, LYNCHBURG, VA 24504
CAMPBELL COUNTY

FOR SALE



Privacy & Convenience



HOME



STABLE W/ APARTMENT



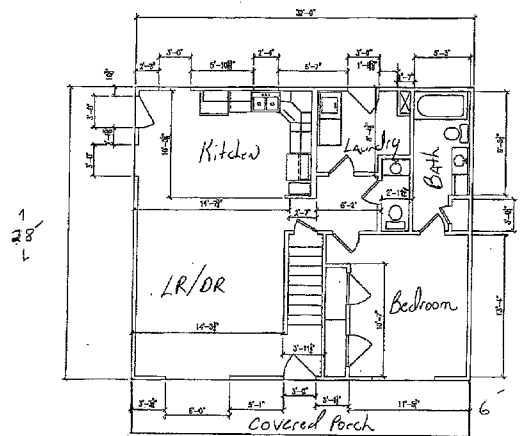
COVERED RIDING AREA



BARN

This wonderful farm is loaded with features and is convenient to Concord, Rustburg, and Lynchburg yet tucked privately away without a neighbor in sight!

- Immaculate cape cod home was built in 2011. Main level (896 sq.ft.) offers an open layout with living room flowing into dining room and large kitchen, large master suite, laundry, beautiful oak floors, and fireplace. The second story (448 sq.ft.) is unfinished but offers plenty of room for 2 more bedrooms and another full bath.
- The back yard features a patio with hot tub (perfect end to a day of horseback riding) and a fenced yard.
- The large 2-story stable (36' x 48') offers 4 stalls, tack room, wash stall, water, electricity, and a one bedroom apartment with full kitchen.
- The smaller stable (24' x 60') offers 2 additional stalls and plenty of storage.
- 20' x 40' barn for hay storage
- 4 fenced paddocks are arranged behind the stables plus 2 riding rings - one sheltered by an impressive 48x80 metal building.
- Just beyond the paddocks, Roach Branch meanders along the edge of a scenic, wide open field.
- A one acre field along the road frontage makes a great additional building location.



DIRECTIONS

From Lynchburg, 460E towards Concord. RIGHT on Doss Rd (646). 1st RIGHT on Crews Shop Rd (656). 1mi to RIGHT on Country Rd. 1mi to driveway on RIGHT.

PRICE: \$329,000

FOR MORE DETAILS CONTACT:

Mike Torrence
mike@trfauctions.com

Office: (434) 455-2285
Cell: (434) 660-5159

Coldwell Banker Commercial Read & Co., Realtors®
101 Annjoy Court, Forest, VA 24551

www.CBCRead.com

Coldwell Banker Commercial and the Coldwell Banker Commercial Logo are registered service marks licensed to Coldwell Banker Real Estate LLC. Each Office is Independently Owned and Operated.

PRIVATE 60 ACRE FARM

1602 COUNTRY RD, LYNCHBURG, VA 24504
CAMPBELL COUNTY

FOR SALE



**COLDWELL
BANKER
COMMERCIAL**

READ & CO., REALTORS®



FOR MORE DETAILS CONTACT:

Mike Torrence
mike@trfauctions.com

Office: (434) 455-2285
Cell: (434) 660-5159

Coldwell Banker Commercial Read & Co., Realtors®
101 Annjo Court, Forest, VA 24551

www.CBCRead.com

Coldwell Banker Commercial and the Coldwell Banker Commercial Logo are registered service marks licensed to Coldwell Banker Real Estate LLC. Each Office is Independently Owned and Operated.

PRIVATE 60 ACRE FARM

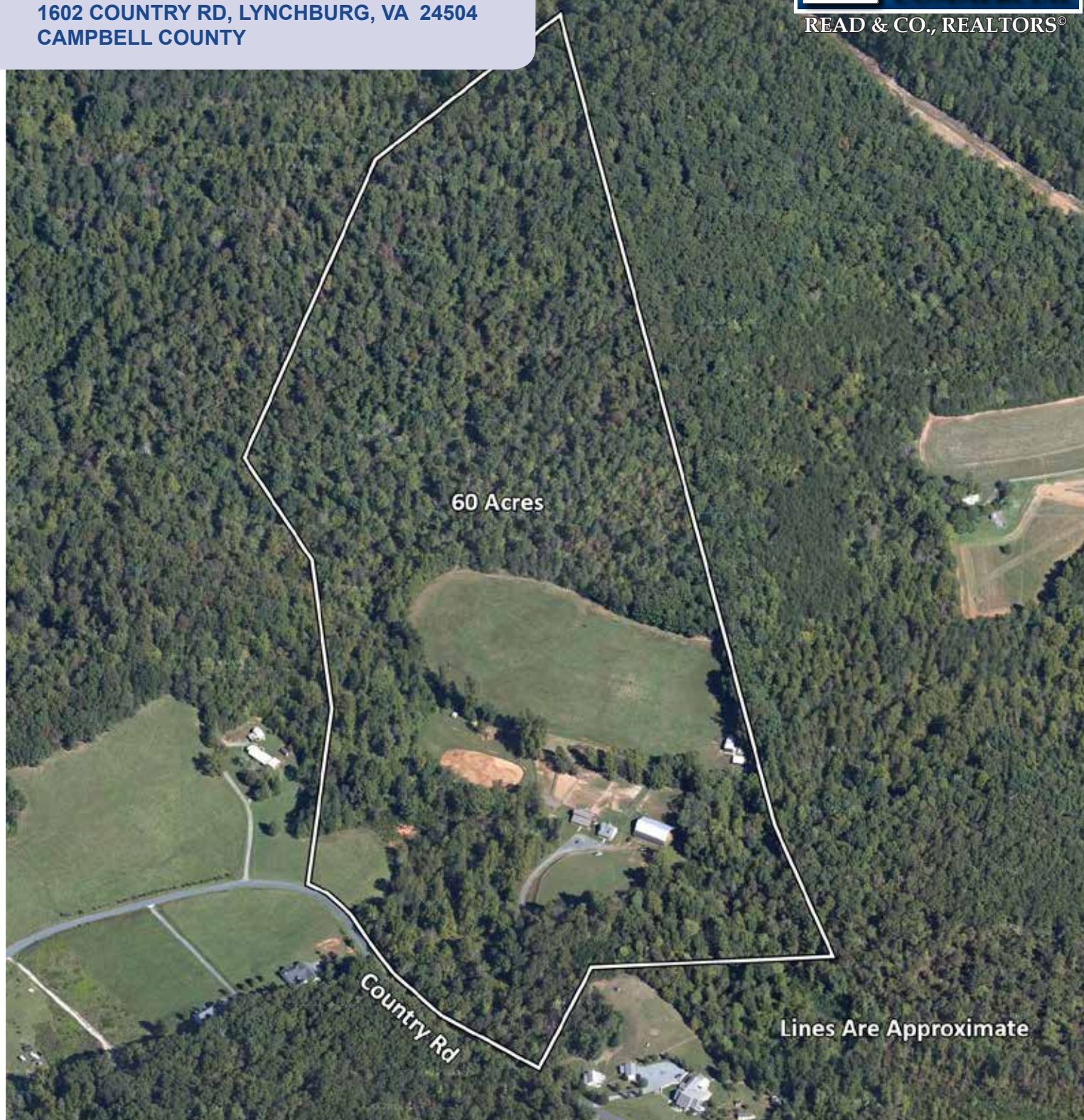
1602 COUNTRY RD, LYNCHBURG, VA 24504
CAMPBELL COUNTY

FOR SALE



**COLDWELL
BANKER
COMMERCIAL**

READ & CO., REALTORS®



FOR MORE DETAILS CONTACT:

Mike Torrence
mike@trfauctions.com

Office: (434) 455-2285
Cell: (434) 660-5159

Coldwell Banker Commercial Read & Co., Realtors®
101 Annjo Court, Forest, VA 24551

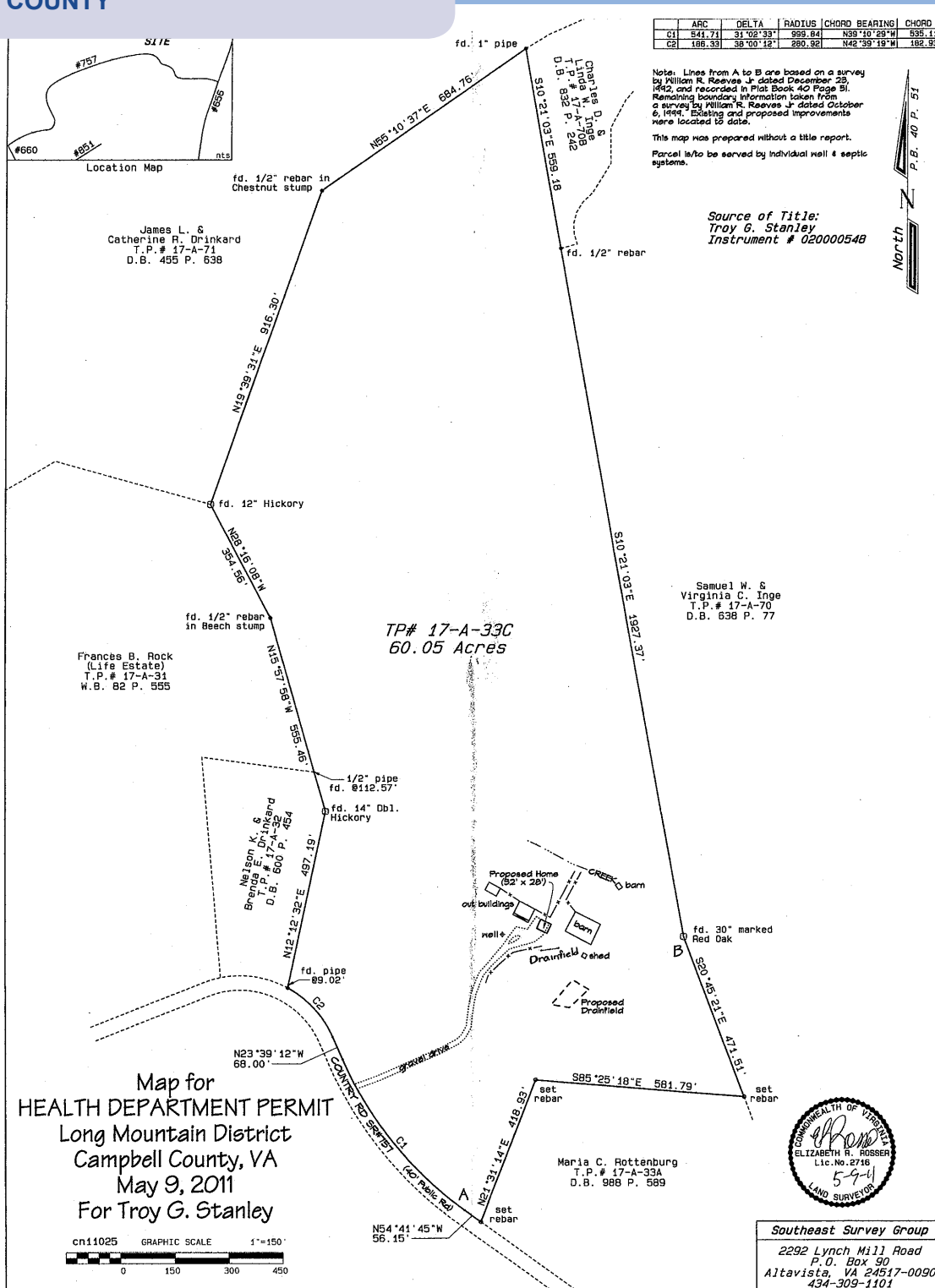
www.CBCRead.com

Coldwell Banker Commercial and the Coldwell Banker Commercial Logo are registered service marks licensed to Coldwell Banker Real Estate LLC. Each Office is Independently Owned and Operated.

PRIVATE 60 ACRE FARM

1602 COUNTRY RD, LYNCHBURG, VA 24504
CAMPBELL COUNTY

FOR SALE



FOR MORE DETAILS CONTACT:

Mike Torrence
mike@trfauctions.com

Office: (434) 455-2285
Cell: (434) 660-5159

Coldwell Banker Commercial Read & Co., Realtors®
101 Annjo Court, Forest, VA 24551

www.CBCRead.com

Coldwell Banker Commercial and the Coldwell Banker Commercial Logo are registered service marks licensed to Coldwell Banker Real Estate LLC. Each Office is Independently Owned and Operated.