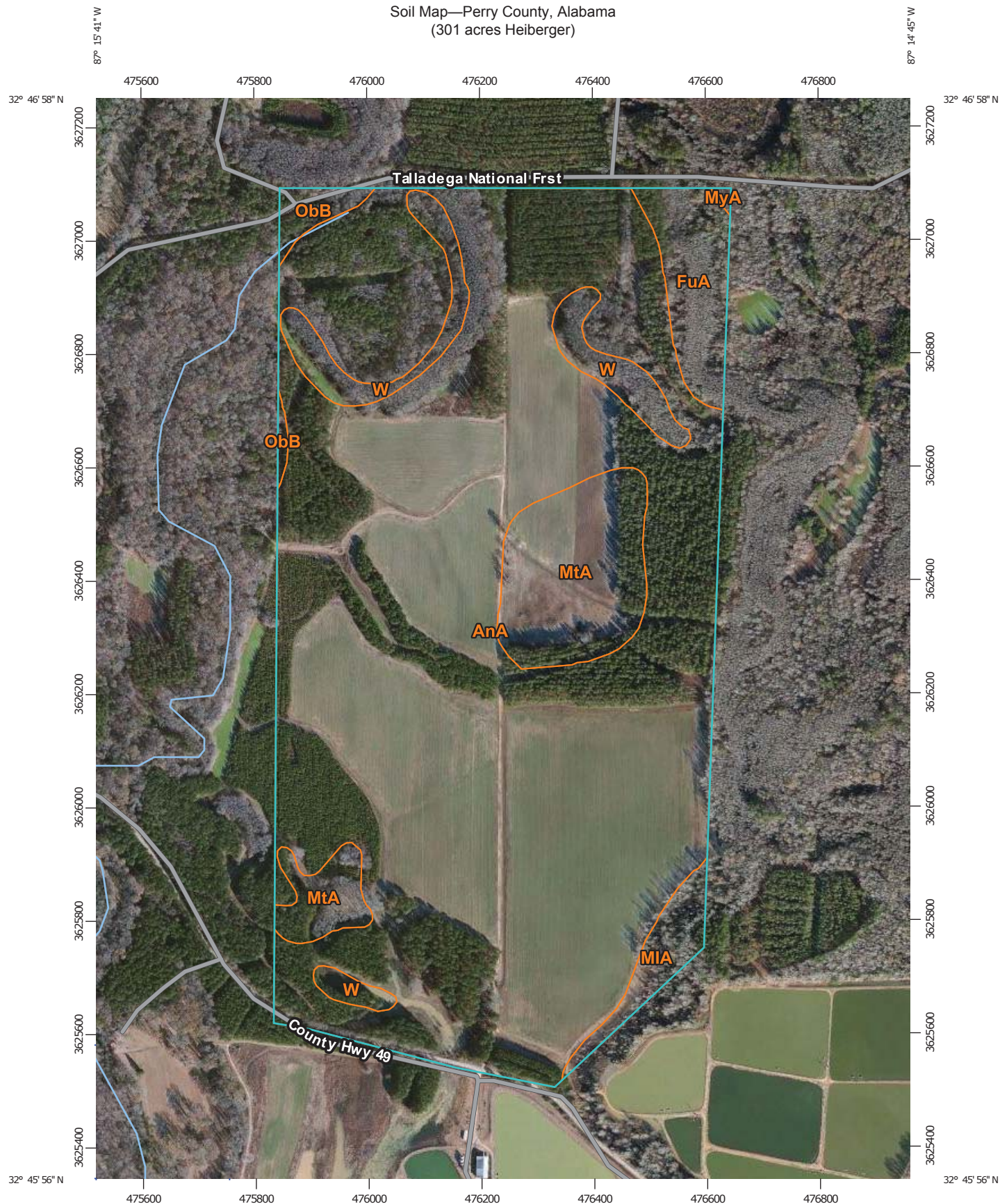


Soil Map—Perry County, Alabama (301 acres Heiberger)



Map Scale: 1:9,300 if printed on A portrait (8.5" x 11") sheet.



Map projection: Web Mercator Corner coordinates: WGS84 Edge tics: UTM Zone 16N WGS84



**Natural Resources
Conservation Service**


Web Soil Survey
National Cooperative Soil Survey

11/19/2014
Page 1 of 3

Soil Map—Perry County, Alabama
(301 acres Heiberger)

MAP LEGEND

Area of Interest (AOI)

 Area of Interest (AOI)

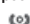
Soils

 Soil Map Unit Polygons

 Soil Map Unit Lines

 Soil Map Unit Points

Special Point Features

 Blowout

 Borrow Pit

 Clay Spot

 Closed Depression

 Gravel Pit

 Gravelly Spot

 Landfill

 Lava Flow

 Marsh or swamp

 Mine or Quarry

 Miscellaneous Water

 Perennial Water

 Rock Outcrop

 Saline Spot

 Sandy Spot

 Severely Eroded Spot


 Sinkhole


 Slide or Slip

 Sodic Spot

 Spoil Area

 Stony Spot


 Very Stony Spot

 Wet Spot

 Other

 Special Line Features

Water Features

 Streams and Canals

Transportation

 Rails


 Interstate Highways

 US Routes

 Major Roads

 Local Roads

Background

 Aerial Photography

MAP INFORMATION

The soil surveys that comprise your AOI were mapped at 1:24,000.

Warning: Soil Map may not be valid at this scale.

Enlargement of maps beyond the scale of mapping can cause misunderstanding of the detail of mapping and accuracy of soil line placement. The maps do not show the small areas of contrasting soils that could have been shown at a more detailed scale.

Please rely on the bar scale on each map sheet for map measurements.

Source of Map: Natural Resources Conservation Service

Web Soil Survey URL: <http://websoilsurvey.nrcs.usda.gov>

Coordinate System: Web Mercator (EPSG:3857)

Maps from the Web Soil Survey are based on the Web Mercator projection, which preserves direction and shape but distorts distance and area. A projection that preserves area, such as the Albers equal-area conic projection, should be used if more accurate calculations of distance or area are required.

This product is generated from the USDA-NRCS certified data as of the version date(s) listed below.

Soil Survey Area: Perry County, Alabama

Survey Area Data: Version 6, Sep 24, 2014

Soil map units are labeled (as space allows) for map scales 1:50,000 or larger.

Date(s) aerial images were photographed: Jan 2, 2011—Mar 16, 2011

The orthophoto or other base map on which the soil lines were compiled and digitized probably differs from the background imagery displayed on these maps. As a result, some minor shifting of map unit boundaries may be evident.



Map Unit Legend

Perry County, Alabama (AL105)			
Map Unit Symbol	Map Unit Name	Acres in AOI	Percent of AOI
AnA	Annemaine silt loam, 0 to 2 percent slopes, rarely flooded	236.4	81.2%
FuA	Fluvaquents, 0 to 1 percent slopes, ponded	10.1	3.5%
MIA	Mantachie, Iuka, and Kinston soils, 0 to 1 percent slopes, frequently flooded	5.3	1.8%
MtA	Minter silty clay loam, ponded	23.7	8.1%
MyA	Myatt fine sandy loam, 0 to 1 percent slopes, rarely flooded	0.2	0.1%
ObB	Ochlockonee-Riverview complex, gently undulating, frequently flooded	3.1	1.1%
W	Water	12.5	4.3%
Totals for Area of Interest		291.3	100.0%