

# FOR SALE

**36 Acres**

**Wooded, Pasture, Hunting Land  
With Ranch House**

**Reagan, Falls County, TX 76680**

**\$269,500**

For a virtual tour and investment offering go to: [www.texasfarmandranchrealty.com](http://www.texasfarmandranchrealty.com)



Suzanna Collins 254-749-0134 (mobile)

254-803-5263 (LAND)

Bob Dube 512-423-6670 (mobile)

[bob@texasfarmandranchrealty.com](mailto:bob@texasfarmandranchrealty.com)

[www.texasfarmandranchrealty.com](http://www.texasfarmandranchrealty.com)

**FOR  
SALE**

# **36 Acres + Modular Home**

## **Reagan, Falls County, TX 76680**

### **Property Highlights**

**Location** – The property is located at 188 CR 255 Reagan, Falls County, Texas. From Marlin go 11.8 miles South on Hwy 6. Turn left on CR 255 and property is 0.6 miles on the left.

**Acres** – 36.3 acres MOL according to survey dated 2/8/2010 and has approximately 630 linear feet of road frontage on CR 255.

**Improvements** – The house was custom built on site in 2008. It consists of 1,680 square feet (according to the FCAD), has 3 bedrooms, 2 bath, kitchen, den, thermal windows, new AC unit, covered patio and a metal roof. 30x30 carport with storage room. The interior has crown molding with Austin white stone outlining the lower exterior of the property. The property is fenced and cross fenced and in excellent condition.

**Water** – The property is serviced by Tri-County Water and is on septic. There is a large deep tank on the property.

**Electricity** – The property is serviced by Navasota Valley Electric.

**Soil** – There are various soil types on the property. Please refer to the USDA Soil Map located in this brochure for soil types.

**Minerals** – Seller Reserves Minerals.

**Topography** – The land is mostly flat with gently rolling areas.

**Wildlife** – Deer, Dove, Hog & Fishing.

**Current Use** – Privately owned and is used for personal residence, hunting and grazing cattle. Approximately 35 acres of the property is encumbered by a grazing lease that expires July 31, 2015. A copy of the lease is on file.

**Ground Cover** – Approximately 1/3 of the land is open pasture and a few trees with the rest being heavily wooded for wildlife cover.

**Easements** – The property has a pipeline easement through it.

**Showings** - By appointment only. If applicable, buyers who are represented by an agent/broker must have its agent/broker present at all showings to participate in any co-brokerage commissions.

**Price** - \$269,500.00 - \$7,424 an acre



**Suzanna Collins** 254-749-0134 (mobile)

**254-803-5263 (LAND)**

**Bob Dube** 512-423-6670 (mobile)

**bob@texasfarmandranchrealty.com** **www.texasfarmandranchrealty.com**

**FOR  
SALE**

# **36 Acres + Modular Home**

**Reagan, Falls County, TX 76680**

## **Property Pictures**



**Suzanna Collins 254-749-0134 (mobile)**

**254-803-5263 (LAND)**

**Bob Dube 512-423-6670 (mobile)**

**bob@texasfarmandranchrealty.com www.texasfarmandranchrealty.com**

"Stewards of Land"  
A DBA of Dube's Commercial, Inc. TREC# 484723



**FOR  
SALE**

# **36 Acres + Modular Home**

**Reagan, Falls County, TX 76680**

## **Property Pictures**



**Suzanna Collins 254-749-0134 (mobile)**

**254-803-5263 (LAND)**

**Bob Dube 512-423-6670 (mobile)**

**bob@texasfarmandranchrealty.com**

**www.texasfarmandranchrealty.com**



**FOR  
SALE**

# **36 Acres + Modular Home**

**Reagan, Falls County, TX 76680**

## **Property Pictures**



"Stewards of Land"  
A DBA of Dube's Commercial, Inc. TREC# 484723

**Suzanna Collins    254-749-0134 (mobile)**

**254-803-5263 (LAND)**

**Bob Dube    512-423-6670 (mobile)**

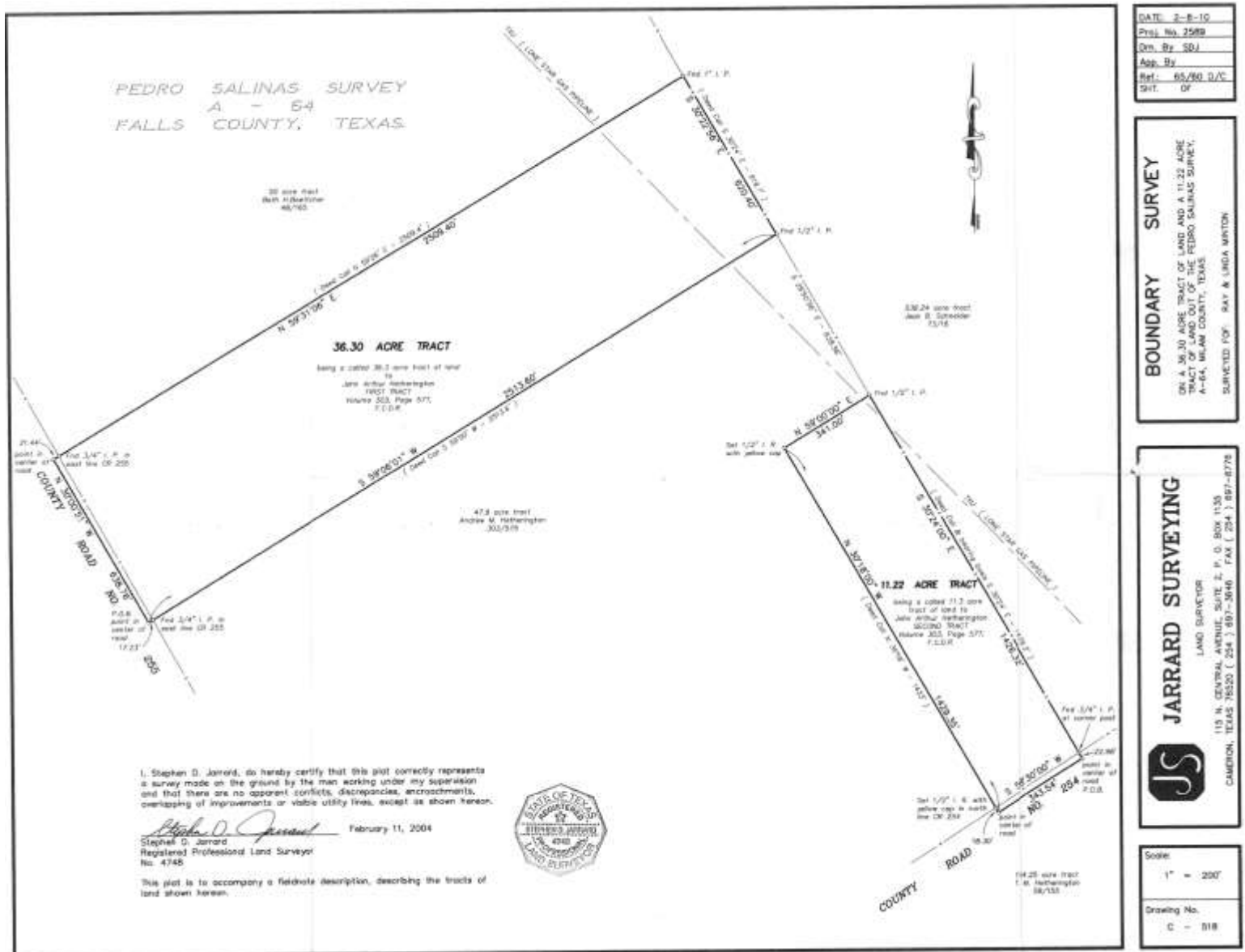
**bob@texasfarmandranchrealty.com    www.texasfarmandranchrealty.com**

FOR  
SALE

# 36 Acres + Modular Home

## Reagan, Falls County, TX 76680

### Survey of Property



"Stewards of Land"  
A DBA of Dube's Commercial, Inc. TREC# 484723

Suzanna Collins 254-749-0134 (mobile)

254-803-5263 (LAND)

Bob Dube 512-423-6670 (mobile)

bob@texasfarmandranchrealty.com www.texasfarmandranchrealty.com



**FOR  
SALE**

# **36 Acres + Modular Home**

**Reagan, Falls County, TX 76680**

## **Property Aerial View**



A DBA of Dube's Commercial, Inc. TREC# 484723

**Suzanna Collins**    254-749-0134 (mobile)

**254-803-5263 (LAND)**

**Bob Dube**    512-423-6670 (mobile)

**bob@texasfarmandranchrealty.com**

**www.texasfarmandranchrealty.com**

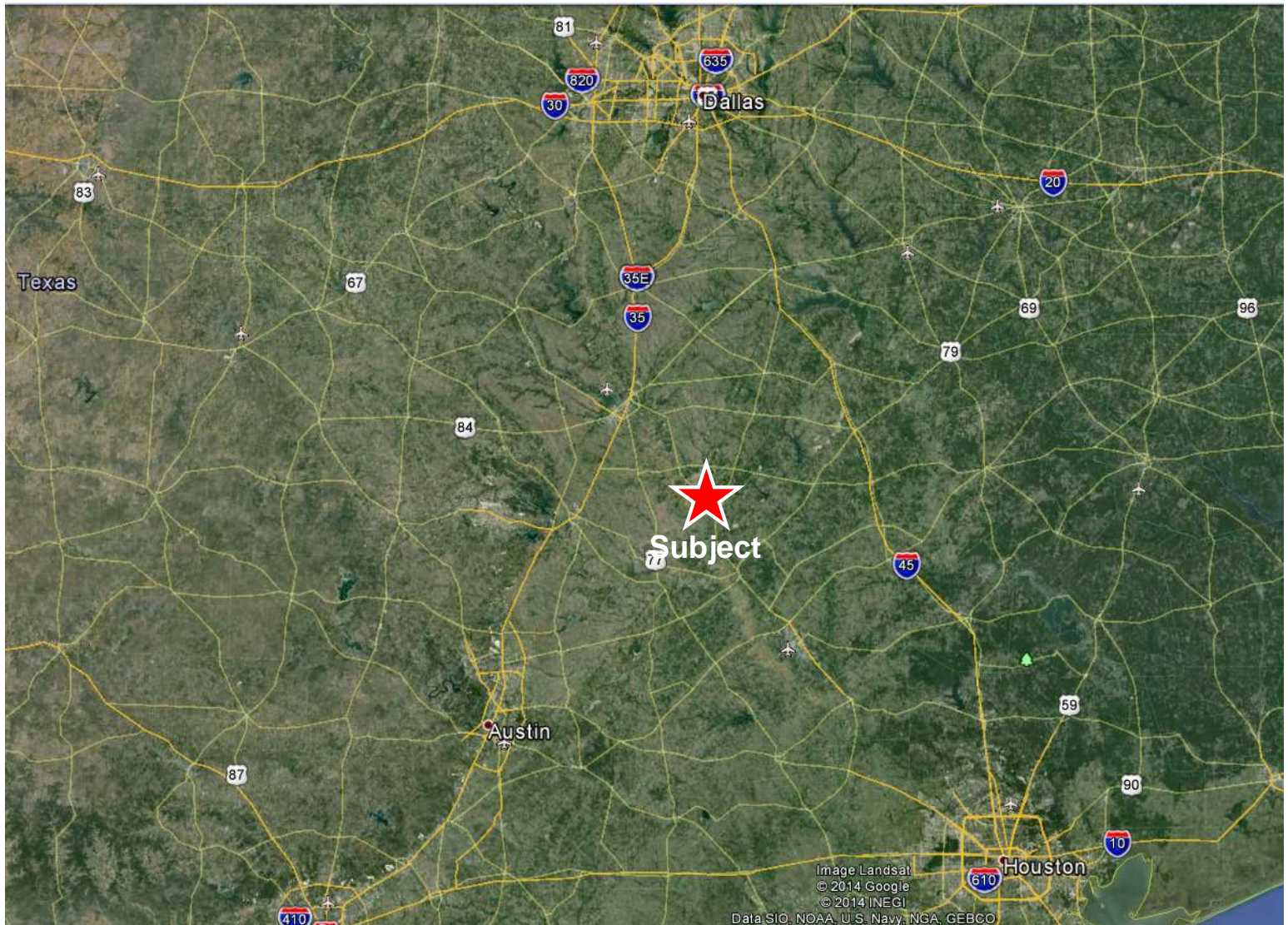


**FOR  
SALE**

# **36 Acres + Modular Home**

**Reagan, Falls County, TX 76680**

## **Property Location Relative to DFW, Austin and Houston**



"Stewards of Land"  
A DBA of Dube's Commercial, Inc. TREC# 484723

**Suzanna Collins    254-749-0134 (mobile)**

**254-803-5263 (LAND)**

**Bob Dube    512-423-6670 (mobile)**

**bob@texasfarmandranchrealty.com**

**www.texasfarmandranchrealty.com**



**FOR  
SALE**

# **36 Acres + Modular Home**

**Reagan, Falls County, TX 76680**

## **Aerial of Water Well Nearest the Property**



A DBA of Dube's Commercial, Inc. TREC# 484723

**Suzanna Collins    254-749-0134 (mobile)**

**254-803-5263 (LAND)**

**Bob Dube    512-423-6670 (mobile)**

**bob@texasfarmandranchrealty.com    www.texasfarmandranchrealty.com**

**FOR  
SALE**

# **36 Acres + Modular Home**

**Reagan, Falls County, TX 76680**

## **Soil Map Aerial**



**Suzanna Collins 254-749-0134 (mobile)**

**254-803-5263 (LAND)**

**Bob Dube 512-423-6670 (mobile)**

**bob@texasfarmandranchrealty.com**

**www.texasfarmandranchrealty.com**



**FOR  
SALE**

# **36 Acres + Modular Home**

## **Reagan, Falls County, TX 76680**

### **Soil Type Legend**

Falls County, Texas (TX145)			
Map Unit Symbol	Map Unit Name	Acres in AOI	Percent of AOI
19	Crockett fine sandy loam, 0 to 1 percent slopes	6.2	17.2%
54	Silstid loamy fine sand, 0 to 3 percent slopes	0.5	1.4%
63	Wilson loam, 0 to 1 percent slopes	0.0	0.0%
64	Wilson loam, 1 to 3 percent slopes	29.1	81.3%
Totals for Area of Interest		<b>35.8</b>	<b>100.0%</b>



"Stewards of Land"  
A DBA of Dube's Commercial, Inc. TREC# 484723

**Suzanna Collins    254-749-0134 (mobile)**

**254-803-5263 (LAND)**

**Bob Dube    512-423-6670 (mobile)**

**bob@texasfarmandranchrealty.com    www.texasfarmandranchrealty.com**

**FOR  
SALE**

# **36 Acres + Modular Home**

## **Reagan, Falls County, TX 76680**

### **Soil Type – 19**

**19—Crockett fine sandy loam, 0 to 1 percent slopes.** This deep, moderately well drained, nearly level soil is on broad uplands and narrow ridgetops. Slopes are convex, and areas range from 50 to 200 acres in size.

This soil has a surface layer of brown, medium acid fine sandy loam about 10 inches thick. Between depths of 10 and 15 inches is reddish brown, medium acid clay that has reddish yellow and yellowish brown mottles. Between depths of 15 and 26 inches is brownish yellow, medium acid clay that has yellow and yellowish red mottles. Below this layer, to a depth of 37 inches, is light reddish brown, slightly acid clay that has yellowish red and yellow mottles. Very pale brown, neutral clay that has yellow, brownish yellow, and reddish yellow mottles is between depths of 37 and 56 inches. The underlying layer, to a depth of 80 inches, is light gray, moderately alkaline clay loam.

This soil is difficult to work; when dry, it forms extremely hard surface crusts. A dense plowpan forms in cultivated areas. Permeability is very slow, and available water capacity is high. The root zone is deep, but root penetration is slow and difficult in the underlying layers. Runoff is slow. The hazard of water erosion is slight.

Included with this soil in mapping are a few intermingled areas of Normangee and Wilson soils. The included soils make up 10 to 20 percent of this map unit.

This soil has medium potential for crops. The major crops are small grain for winter grazing and grain sorghum. The major objectives in management of this soil are improving soil tilth, maintaining fertility, and controlling erosion. Proper management includes growing high-residue crops and deep-rooted legumes.

This soil has high potential for pasture. It is well suited to coastal bermudagrass, common bermudagrass, and weeping lovegrass. Good pasture management includes fertilization, weed control, and controlled grazing.

This soil has high potential for range. The climax plant community is a mixture of tall and mid grasses and an overstory of a few live oak, elm, and hackberry trees along streams and occasionally in motts.

This soil has low potential for most urban uses. Its most restrictive limitations are shrinking and swelling with changes in moisture, corrosivity to uncoated steel, low strength, and slow percolation. The potential for recreation is medium. The very slow permeability is the most restrictive limitation for this use. Potential for openland and rangeland wildlife habitat is medium. Capability subclass IIIs; Claypan Prairie range site.



A DBA of Dube's Commercial, Inc. TREC# 484723

**Suzanna Collins    254-749-0134 (mobile)**

**254-803-5263 (LAND)**

**Bob Dube    512-423-6670 (mobile)**

**bob@texasfarmandranchrealty.com    www.texasfarmandranchrealty.com**



**FOR  
SALE**

# **36 Acres + Modular Home**

## **Reagan, Falls County, TX 76680**

### **Soil Type – 54**

**54—Siltid loamy fine sand, 0 to 3 percent slopes.** This deep, well drained, nearly level to gently sloping soil is on ancient stream terraces. Slopes are convex. Areas are mostly oval and range from 20 to 295 acres in size.

This soil has a surface layer of slightly acid loamy fine sand about 26 inches thick. This layer is brown to a depth of 10 inches and pale brown below. Between depths of 26 and 43 inches is brownish yellow, medium acid sandy clay loam that has pale brown and reddish yellow mottles. Between depths of 43 and 56 inches is yellow, medium acid sandy clay loam that has light gray and reddish yellow mottles. The underlying layer, to a depth of 80 inches, is brownish yellow, medium acid sandy clay loam that has reddish yellow mottles.

This soil can be worked throughout a wide range of moisture conditions. Permeability is moderate, and available water capacity is medium. The root zone is deep and easily penetrated by roots. Runoff is slow. The hazards of soil blowing and water erosion are slight.

Included with this soil in mapping are a few intermingled areas of Chazos, Padina, and Silawa soils. The included soils make up about 10 to 20 percent of this map unit.

This soil has medium potential for production of crops, but it is limited for this use by low natural fertility and the medium available water capacity. The only crops grown on this soil are corn and some specialty crops, such as tomatoes and watermelons. The major objectives of management are to conserve moisture and improve fertility. Growing crops that produce large amounts of residue or growing legumes help to maintain tilth.

This soil is used mainly for pasture, and it has medium potential for this use. It is well suited to improved bermudagrass and weeping lovegrass. Proper pasture management includes weed control, controlled grazing, and applications of fertilizer.

This soil has medium potential for range. The climax plant community is an open savannah of post oak and blackjack oak that has an understory of tall and mid grasses.

This soil has high potential for urban uses. Caving cutbanks is the most restrictive limitation. The potential for recreation is low. The sandy surface layer is the most restrictive limitation for this use. Potential for openland wildlife habitat is low, and potential for rangeland wildlife habitat is medium. Capability subclass IIIs; Sandy range site.



A DBA of Dube's Commercial, Inc. TREC# 484723

**Suzanna Collins    254-749-0134 (mobile)**

**254-803-5263 (LAND)**

**Bob Dube    512-423-6670 (mobile)**

**bob@texasfarmandranchrealty.com    www.texasfarmandranchrealty.com**

**FOR  
SALE**

# **36 Acres + Modular Home**

## **Reagan, Falls County, TX 76680**

### **Soil Type – 63**

**63—Wilson loam, 0 to 1 percent slopes.** This deep, somewhat poorly drained, nearly level soil is on uplands and terraces. Slopes are plane. Areas range from 15 to 120 acres in size.

This soil has a surface layer of dark grayish brown, slightly acid loam about 6 inches thick. Between depths of 6 and 32 inches is dark gray, neutral clay loam. Between depths of 32 and 60 inches is gray, mildly alkaline clay loam that has brown mottles in the lower part. The underlying layer, to a depth of 80 inches, is light olive gray, moderately alkaline clay loam that has light gray and light brownish gray mottles.

The soil is difficult to work because of dense plowpan layers that form in cultivated areas. Permeability is very slow, and the available water capacity is high. The root zone is deep, but root penetration is slow and difficult in the underlying layers. Runoff is slow. The hazard of water erosion is slight.

Included with this soil in mapping are a few intermingled areas of Wilson silty clay loam and Crockett soils. The included soils make up 10 to 20 percent of these areas.

This soil has medium potential for production of crops. The major crops are grain sorghum, cotton, hay, and some small grain for winter grazing. The objectives of management are improving tilth and maintaining fertility. Growing crops that produce large amounts of residue and legumes helps maintain tilth.

This soil has medium potential for pasture. It is well suited to coastal bermudagrass, King Ranch bluestem, and weeping lovegrass. Proper management includes fertilization, weed control, and controlled grazing.

This soil has medium potential for range. The climax plant community is a mixture of tall and mid grasses and an overstory of a few live oak, elm, and hackberry trees along streams and occasionally in motts.

This soil has low potential for most urban uses. Its most restrictive limitations are shrinking and swelling with changes in moisture, occasional wetness, low strength, corrosivity to uncoated steel, and slow percolation. The potential for recreation is medium. Wetness and the very slow permeability are the most restrictive limitations for this use. Potential for both openland and rangeland wildlife habitat is medium. Capability subclass IIIw; Claypan Prairie range site.



A DBA of Dube's Commercial, Inc. TREC# 484723

**Suzanna Collins    254-749-0134 (mobile)**

**254-803-5263 (LAND)**

**Bob Dube    512-423-6670 (mobile)**

**bob@texasfarmandranchrealty.com    www.texasfarmandranchrealty.com**



**FOR  
SALE**

# **36 Acres + Modular Home**

## **Reagan, Falls County, TX 76680**

### **Soil Type – 64**

**64—Wilson loam, 1 to 3 percent slopes.** This deep, somewhat poorly drained, gently sloping soil is on uplands and terraces. Slopes are plane or slightly concave. Areas range from 15 to 200 acres in size.

This soil has a surface layer of dark grayish brown, slightly acid loam about 6 inches thick. Between depths of 6 and 22 inches is dark gray, neutral silty clay. Between depths of 22 and 39 inches is gray, mildly alkaline silty clay. Between depths of 39 and 64 inches is light brownish gray, moderately alkaline silty clay that has yellowish brown mottles. The underlying layer, to a depth of 80 inches, is light olive gray, moderately alkaline silty clay that has yellow and strong brown mottles.

This soil is difficult to work because of dense plowpan layers that form in cultivated areas. Permeability is very slow, and the available water capacity is high. The root zone is deep, but root penetration is slow and difficult in the underlying layers. Runoff is medium. The hazard of water erosion is moderate.

Included with this soil in mapping are a few intermingled areas of Wilson silty clay loam and Crockett soils. The included soils make up about 10 to 20 percent of this map unit.

This soil has medium potential for production of crops, but it is limited by surface crusting and rapid loss of soil moisture during the summer. The major crops are grain sorghum, cotton, and small grain for winter grazing. The major objectives of management are controlling erosion, maintaining fertility, and improving tilth. Growing crops that produce large amounts of residue or growing deep-rooted legumes helps control erosion and maintain the soil tilth.

This soil has medium potential for pasture. It is well suited to coastal bermudagrass, King Ranch bluestem, and weeping lovegrass. Proper management includes fertilization, weed control, and controlled grazing.

This soil has medium potential for range. The climax plant community is a mixture of tall and mid grasses and an overstory of a few live oak, elm, and hackberry trees along streams and occasionally in motts.

This soil has low potential for most urban uses. Its most restrictive limitations are shrinking and swelling with changes in moisture, occasional wetness, low strength, corrosivity to uncoated steel, and slow percolation. The potential for recreation is medium. Occasional wetness and the very slow permeability are the most restrictive limitations for this use. Potential for both openland and rangeland wildlife habitat is medium. Capability subclass IIIe; Claypan Prairie range site.



A DBA of Dube's Commercial, Inc. TREC# 484723

**Suzanna Collins    254-749-0134 (mobile)**

**254-803-5263 (LAND)**

**Bob Dube    512-423-6670 (mobile)**

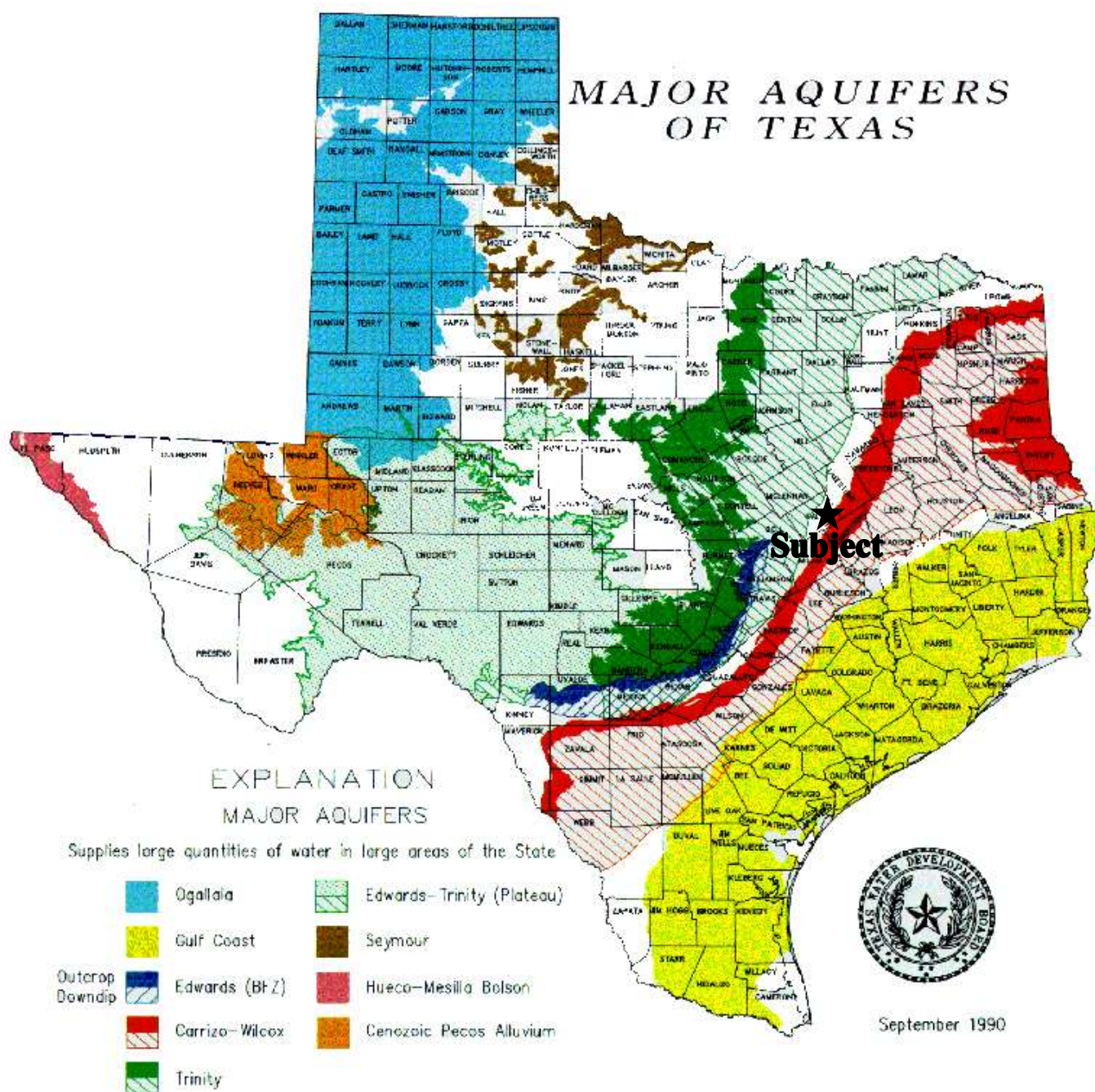
**bob@texasfarmandranchrealty.com    www.texasfarmandranchrealty.com**

FOR  
SALE

# 36 Acres + Modular Home

Reagan, Falls County, TX 76680

## Property Location to Major Aquifers of Texas



**TEXAS**  
FARM & RANCH REALTY

"Stewards of Land"  
A DBA of Dube's Commercial, Inc. TREC# 484723

Suzanna Collins 254-749-0134 (mobile)

254-803-5263 (LAND)

Bob Dube 512-423-6670 (mobile)

bob@texasfarmandranchrealty.com

www.texasfarmandranchrealty.com



**FOR  
SALE**

# **36 Acres + Modular Home**

## **Reagan, Falls County, TX 76680**

### **CONFIDENTIALITY & DISCLAIMER**

The information contained in the following Investment Brochure is proprietary and strictly confidential. It is intended to be reviewed only by the party receiving it from Dube's Commercial, Inc., DBA Texas Farm and Ranch Realty and should not be made available to any other person or entity without the written consent of Dube's Commercial, Inc., DBA Texas Farm and Ranch Realty. This Investment Brochure has been prepared to provide summary information to prospective investors, and to establish only a preliminary level of interest in the subject property. The information contained herein is not a substitute for a thorough due diligence investigation. Dube's Commercial, Inc., DBA Texas Farm and Ranch Realty makes no warranty or representation, with respect to the income or expenses for the subject property, the future projected financial performance of the property, the size and square footage of the property and improvements, the presence or absence of contaminating substances, PCB's or asbestos, the compliance with State and Federal regulations, the physical condition of the improvements thereon, or the financial condition or business prospects, or any buyer's plans or intentions to continue its ownership of the subject property. The information contained in this Investment Brochure has been obtained from sources we believe to be reliable; however, Dube's Commercial, Inc., DBA Texas Farm and Ranch Realty makes no warranty or representation whatsoever regarding the accuracy or completeness of the information provided.



**Suzanna Collins    254-749-0134 (mobile)**

**254-803-5263 (LAND)**

**Bob Dube    512-423-6670 (mobile)**

**bob@texasfarmandranchrealty.com    www.texasfarmandranchrealty.com**



## Information About Brokerage Services

**B**efore working with a real estate broker, you should know that the duties of a broker depend on whom the broker represents. If you are a prospective seller or landlord (owner) or a prospective buyer or tenant (buyer), you should know that the broker who lists the property for sale or lease is the owner's agent. A broker who acts as a subagent represents the owner in cooperation with the listing broker. A broker who acts as a buyer's agent represents the buyer. A broker may act as an intermediary between the parties if the parties consent in writing. A broker can assist you in locating a property, preparing a contract or lease, or obtaining financing without representing you. A broker is obligated by law to treat you honestly.

### IF THE BROKER REPRESENTS THE OWNER:

The broker becomes the owner's agent by entering into an agreement with the owner, usually through a written - listing agreement, or by agreeing to act as a subagent by accepting an offer of subagency from the listing broker. A subagent may work in a different real estate office. A listing broker or subagent can assist the buyer but does not represent the buyer and must place the interests of the owner first. The buyer should not tell the owner's agent anything the buyer would not want the owner to know because an owner's agent must disclose to the owner any material information known to the agent.

### IF THE BROKER REPRESENTS THE BUYER:

The broker becomes the buyer's agent by entering into an agreement to represent the buyer, usually through a written buyer representation agreement. A buyer's agent can assist the owner but does not represent the owner and must place the interests of the buyer first. The owner should not tell a buyer's agent anything the owner would not want the buyer to know because a buyer's agent must disclose to the buyer any material information known to the agent.

### IF THE BROKER ACTS AS AN INTERMEDIARY:

A broker may act as an intermediary between the parties if the broker complies with The Texas Real Estate License Act. The broker must obtain the written consent of each party to the transaction to act as an

intermediary. The written consent must state who will pay the broker and, in conspicuous bold or underlined print, set forth the broker's obligations as an intermediary. The broker is required to treat each party honestly and fairly and to comply with The Texas Real Estate License Act. A broker who acts as an intermediary in a transaction:

(1) shall treat all parties honestly;

(2) may not disclose that the owner will accept a price less than the asking price unless authorized in writing to do so by the owner;

(3) may not disclose that the buyer will pay a price greater than the price submitted in a written offer unless authorized in writing to do so by the buyer; and

(4) may not disclose any confidential information or any information that a party specifically instructs the broker in writing not to disclose unless authorized in writing to disclose the information or required to do so by The Texas Real Estate License Act or a court order or if the information materially relates to the condition of the property.

With the parties' consent, a broker acting as an intermediary between the parties may appoint a person who is licensed under The Texas Real Estate License Act and associated with the broker to communicate with and carry out instructions of one party and another person who is licensed under that Act and associated with the broker to communicate with and carry out instructions of the other party.

**If you choose to have a broker represent you**, you should enter into a written agreement with the broker that clearly establishes the broker's obligations and your obligations. The agreement should state how and by whom the broker will be paid. You have the right to choose the type of representation, if any, you wish to receive. Your payment of a fee to a broker does not necessarily establish that the broker represents you. If you have any questions regarding the duties and responsibilities of the broker, you should resolve those questions before proceeding.

Real estate licensee asks that you acknowledge receipt of this information about brokerage services for the licensee's records.

Buyer, Seller, Landlord or Tenant

Date

Texas Real Estate Brokers and Salespersons are licensed and regulated by the Texas Real Estate Commission (TREC). If you have a question or complaint regarding a real estate licensee, you should contact TREC at P.O. Box 12188, Austin, Texas 78711-2188, 512-936-3000 (<http://www.trec.texas.gov>)

(TAR-2501) 10-10-11

TREC No. OP-K

Dube's Commercial Inc 401 Congress Austin, TX 78701  
Phone: (512) 423-6670

Fax: (512) 671-8011

Robert Dube

Untitled

Produced with ZipForm® by zipLogix 18070 Fifteen Mile Road, Fraser, Michigan 48026 [www.zipLogix.com](http://www.zipLogix.com)