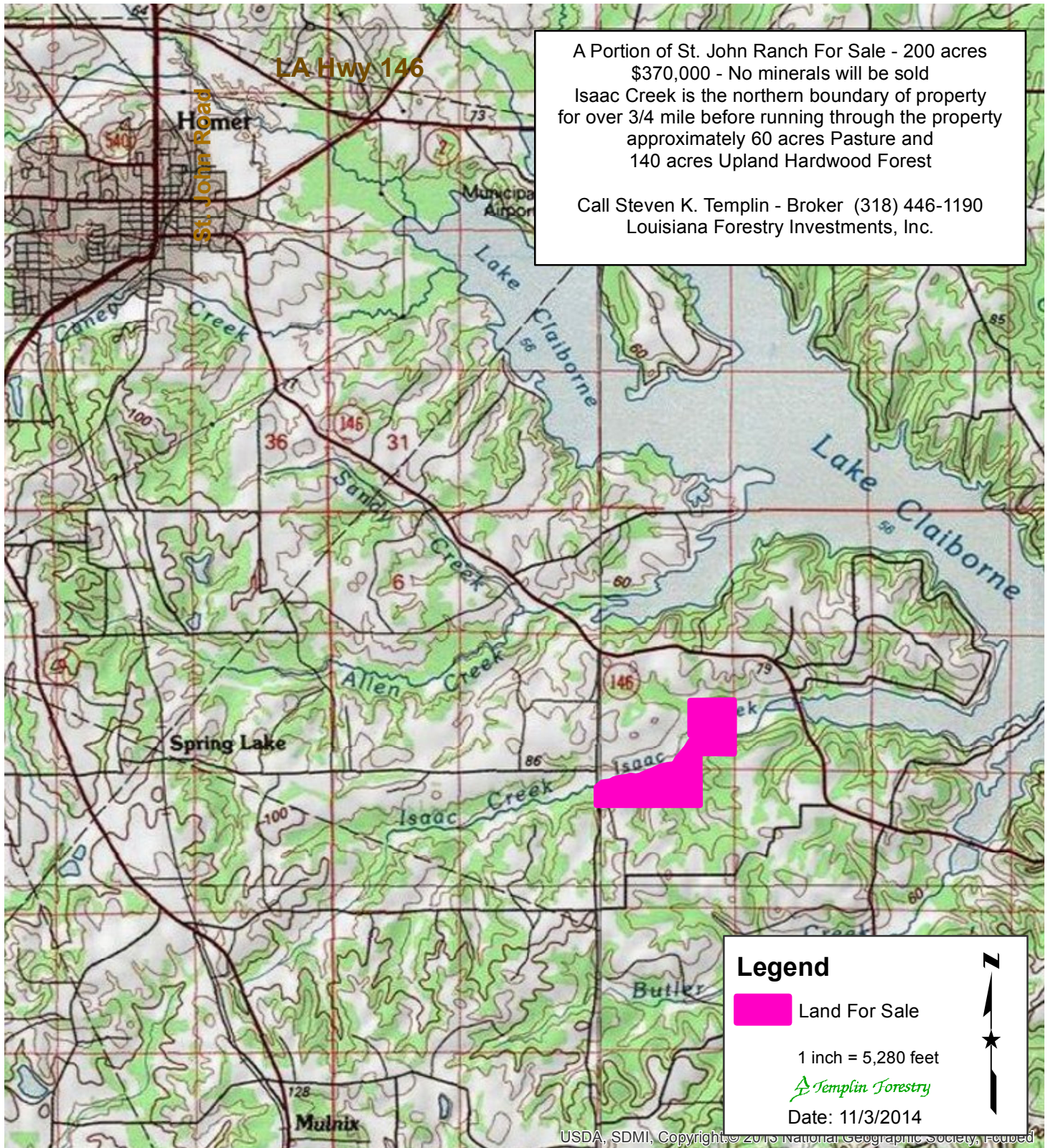


Land For Sale

200 acres - \$370,000

A Portion of St. John Ranch - Approximately 200 acres, more or less,
being that portion of the N 1/2 of the NW 1/4, and the NW 1/4 of the NE 1/4,
Section 16 lying south of Isaac Creek; and that portion of the SE 1/4 of the SW 1/4,
and the SW 1/4 of the SE 1/4, and the NW 1/4 of the SE 1/4, Section 9, lying south of Isaac Creek;
and the NE 1/4 of the SE 1/4, and the N 1/2 of the SE 1/4 of the SE 1/4, Section 9;
and the westernmost portion of the NW 1/4 of the SE 1/4, Section 9
that brings the entire acreage to equal 200 acres; all in T20N, R6W, Claiborne Parish, Louisiana



A Portion of St. John Ranch For Sale - 200 acres
\$370,000 - No minerals will be sold
Isaac Creek is the northern boundary of property
for over 3/4 mile before running through the property
approximately 60 acres Pasture and
140 acres Upland Hardwood Forest

Call Steven K. Templin - Broker (318) 446-1190
Louisiana Forestry Investments, Inc.