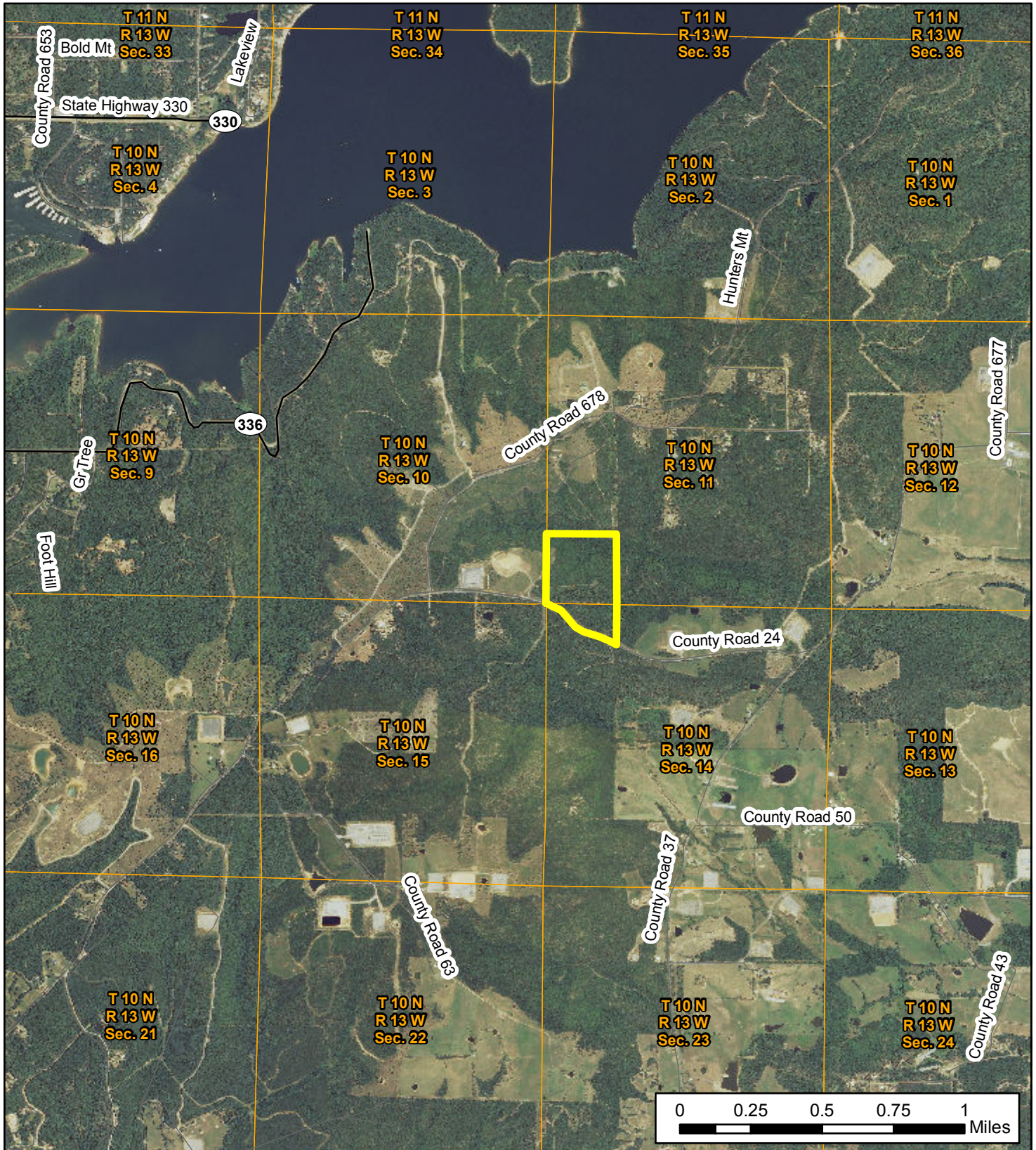


Lazy Creek 52

SW ¼ SW ¼, Section 11, Part of NW ¼ NW ¼, Section 14, lying north and east of "east mountain road",
Township 10 North, Range 13 West, Van Buren County, AR, 52 acres, more or less



Phone: 1-888-695-8733
www.forestryrealestate.com



DAVIS DUBOSE KNIGHT
FORESTRY & REAL ESTATE LLC

This map and all information it contains is provided "AS IS," as a courtesy to potential buyers. Potential buyers should make their own determination regarding the accuracy of the information provided. Neither the seller, Davis DuBose Knight Forestry & Real Estate PLLC (DDKFRE), their subsidiaries, affiliates nor representatives warrant the accuracy, adequacy or completeness of any information contained herein regarding the property, its condition, boundaries, access, acreage, or timber stand information. DDKFRE expressly disclaims liability for errors or omissions.