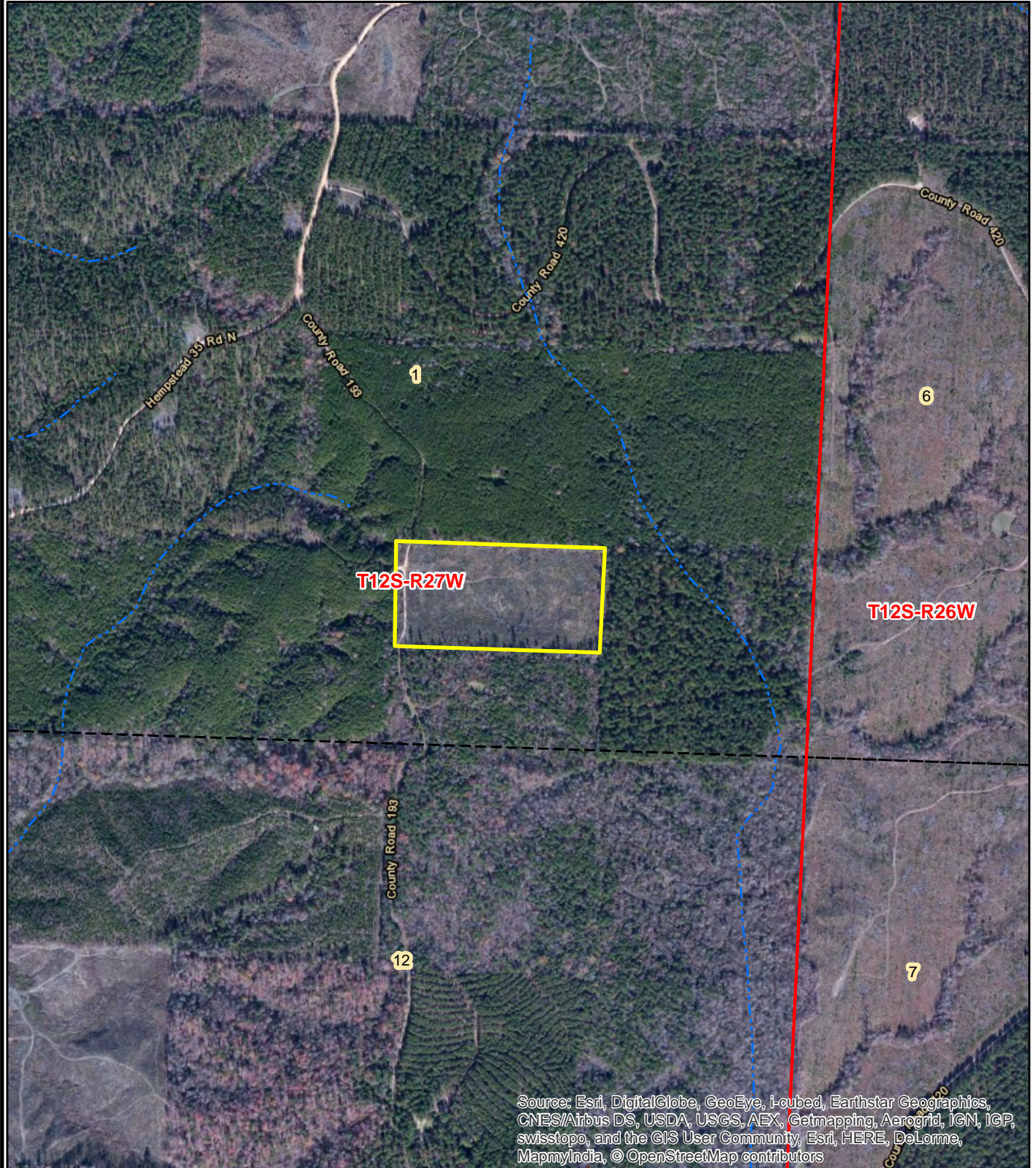


# NOTICE OF LAND SALE

"Saratoga 20 Tract" - Listing #4465

N½ of SW¼ of SE¼, Sec. 1, T12S, R27W, Hempstead County, Arkansas

Containing 20 acres, more or less



0 0.125 0.25  
Miles



Created: October, 2014  
2011 ESRI Aerial Photography  
By: JBK