

Cleburne Co., AL

SEE PHOTOS
ON WEB

www.cypruspartners.com

Reference # 315

More info at
205-936-2160

Land For Sale
70 acres +/-
\$77,000

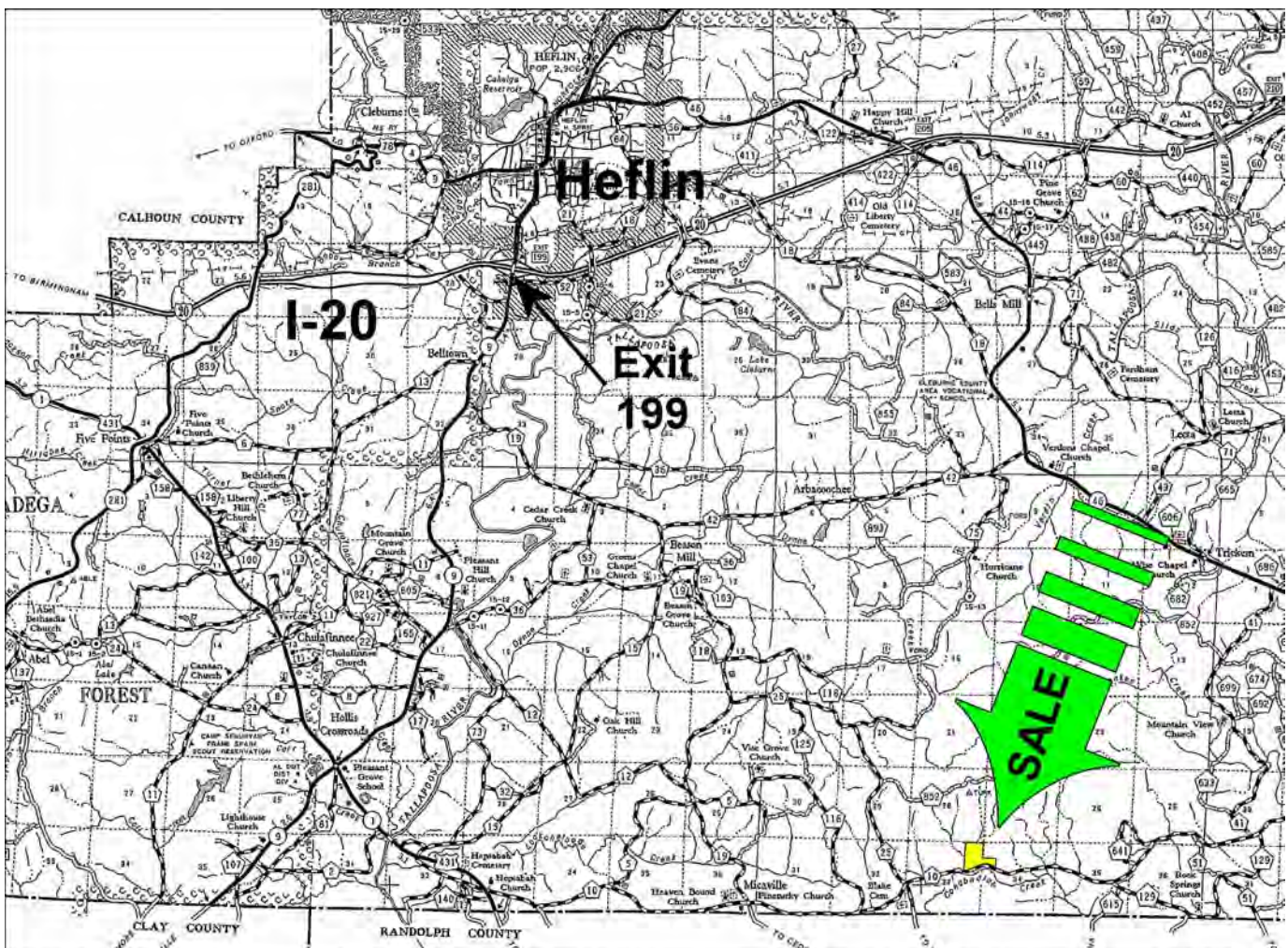
Exclusive Agent For Owner

CYPRUS
PARTNERS

P O Box 590045
Homewood, AL 35259

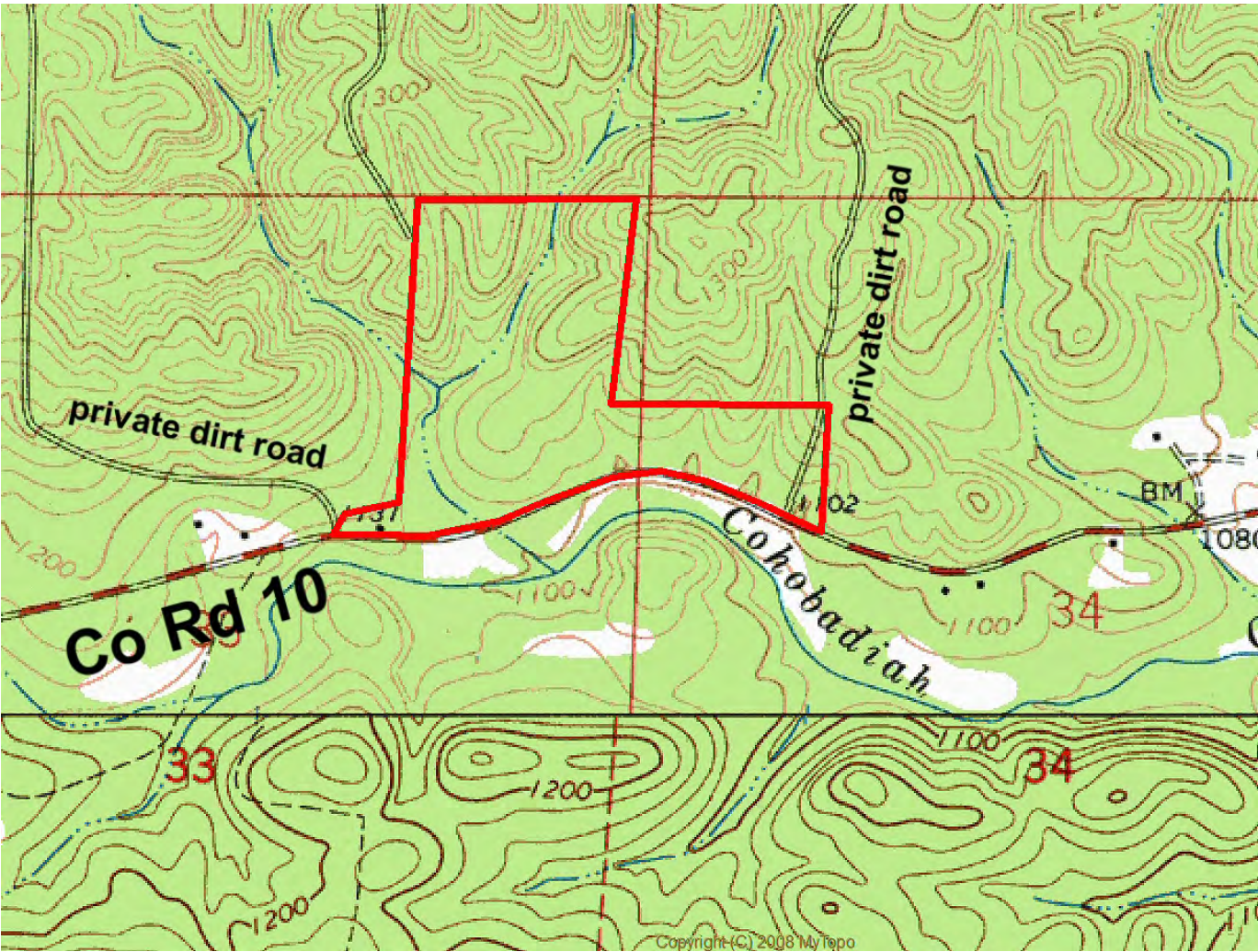
- Located in south Cleburne County 11 miles southeast of Heflin
- About ½ mile of paved frontage
- Power available
- Timber was clear cut about 1 year ago and not replanted
- Easy to replant in pines or put in green fields

All distances and acres are estimates and should be independently verified



Directions from I-20 Exit #199 (AL Hwy 9 at Heflin): (22 minutes to the property)

From Exit #199 go south on Hwy 9 for 1.9 miles and take a left on Co Rd 19. Go 6.2 miles and take a left on Co Rd 25. Go 4.3 miles and take a left on Co Rd 10. Go 1.0 miles to the property on the left. Look for the Cyprus Partners sign. Property lines are flagged in pink where they touch the road. The east line is located at Lat: 33°30'10.88" N. Lon: 85°28'54.62" W.



Aerial view

NOTICE: Investment in land carries risk. Prospective buyers should understand and independently verify the risk factors before buying this property. All information furnished by Cyprus Partners about this property has been obtained from sources believed to be reliable. However, neither Cyprus Partners nor the property owner makes any representation or warranty as to completeness or accuracy. This property is subject to prior sale, price change and withdrawal from the market without notice. No representation or warranty is made, express or implied, as to the condition of the property, boundaries, fitness for any particular use, Fair Market Value, access, acres, zoning, or condition of title.