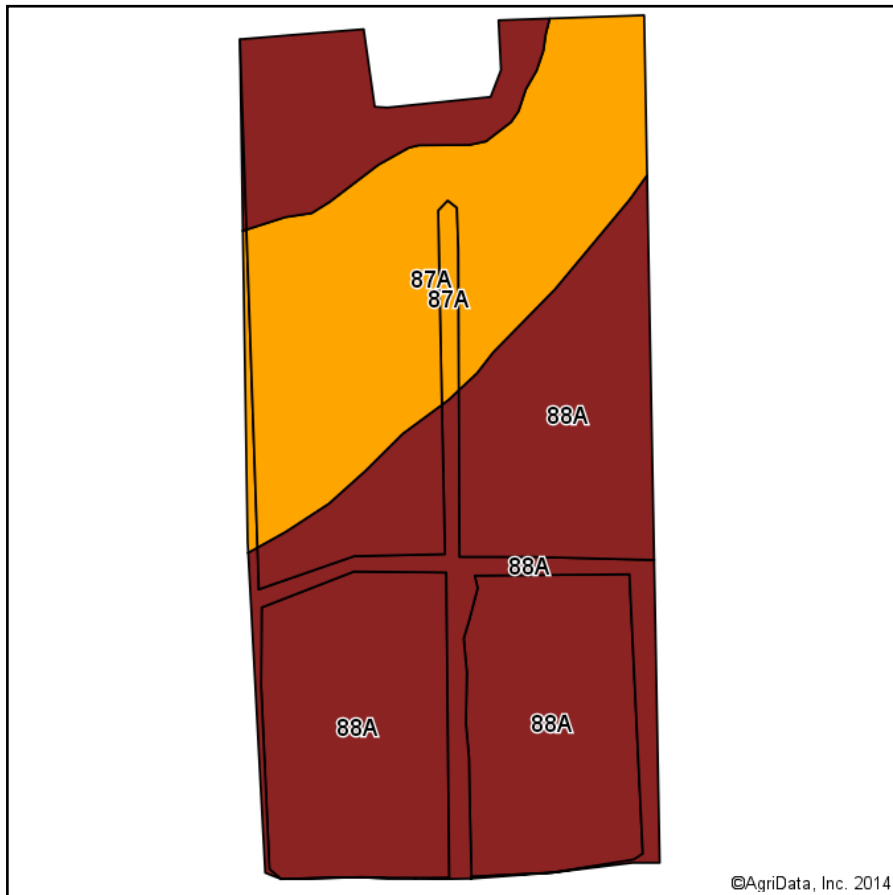
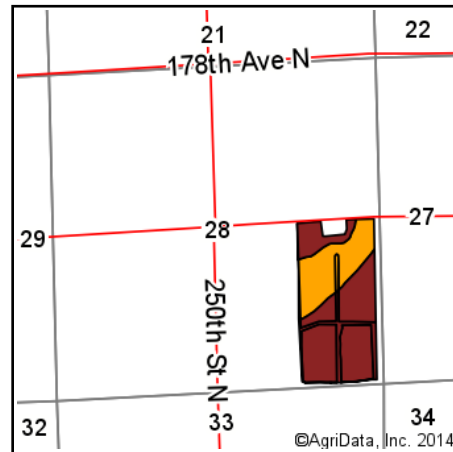


Soil Map

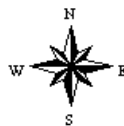


Soils data provided by USDA and NRCS.

©AgriData, Inc. 2014



State: **Illinois**
 County: **Rock Island**
 Location: **28-20N-2E**
 Township: **Cordova**
 Acres: **74.13**
 Date: **10/30/2014**



Maps Provided By:



© AgriData, Inc. 2014 www.AgriDataInc.com

Area Symbol: IL161, Soil Area Version: 9

Code	Soil Description	Acres	Percent of field	Il. State Productivity Index Legend	Corn Bu/A	Soybeans Bu/A	Wheat Bu/A	Crop productivity index for optimum management
88A	Sparta loamy sand, 0 to 2 percent slopes	50.76	68.5%		119	41	50	92
87A	Dickinson sandy loam, 0 to 2 percent slopes	23.37	31.5%		142	46	56	104
Weighted Average					126.3	42.6	51.9	95.8

Area Symbol: IL161, Soil Area Version: 9

Table: Optimum Crop Productivity Ratings for Illinois Soil by K.R. Olson and J.M. Lang, Office of Research, ACES, University of Illinois at Champaign-Urbana. Version: 1/2/2012 Amended Table S2 B811 (Updated 1/10/2012)

Crop yields and productivity indices for optimum management (B811) are maintained at the following NRES web site: <http://soilproductivity.nres.illinois.edu/>

** Indexes adjusted for slope and erosion according to Bulletin 811 Table S3

Field borders provided by Farm Service Agency as of 5/21/2008. Aerial photography provided by Aerial Photography Field Office.