

Overlooking the Flathead Valley with views of Foy Lake, Whitefish Mountain, Smith Valley and the mountain peaks of Glacier National Park, this majestic mountaintop estate is perfect with its panoramic views and abundant wildlife giving you all the privacy and seclusion from the world on 200± acres, yet just minutes from all that Kalispell has to offer.

AUCTION INFORMATION:

Registration Fee: A \$25,000 certified or cashier's check will be required in order to bid on the property.

Sale Date and Location: Saturday, November 15th at 1:00pm (MT), registration begins at 12:00pm (MT). The auction will take place on the premises located at 100 Deer Run, Kalispell, MT 59901.

Terms of Sale: 10% down on auction day with the balance due at closing within 30 days.

Property Information: Additional information is available on our website.

Buyer's Premium: A 10% Buyer's Premium will be added to the final bid to determine the total contract price paid by the purchaser.

Property Inspection: An auction representative will be onsite November 1st, 2nd, 8th, 9th and 14th from 10:00am – 4:00pm (MT), or by appointment.

Buyer Broker Participation: Buyer Broker Guidelines are available on our website.

Remote Bidding: Remote bidding is available. Please contact us for more information.

Directions: From Kalispell at intersection of Hwy 93 (Main Street) and Hwy 2 (West Idaho Street) take Hwy 2 West for 1.2 miles to US 93 ATL, turn left and go .8 miles to Roundabout, take first right on Foy's Lake Road, go 2.1 miles and turn right on North Foy's Lake Road, go 1.6 miles and bear right Daley Lane, go .9 miles to Deer Run Road, turn right onto property.

800-476-3939
www.targetauction.com



P. O. Box 798, Gadsden, AL 35902

800-476-3939

Thinking of Selling? Give us a Call!

www.targetauction.com



Cynthia A. Lanier, MT Lic# 2356

#152 DISCLAIMER: Target Auction and Land Company, Inc. assumes no liability for errors or omissions in this listing. Although information has been obtained from sources deemed reliable, the auctioneer makes no warranty or guarantee, expressed or implied, as to the accuracy of the information herein contained. It is for this reason that the buyer's and buyer's agents should avail themselves of the opportunity to make a thorough inspection and verify all specifications prior to sale. All properties offered for sale in "AS IS" condition. This includes both personal property and real property. All sales are final. This listing may be modified or withdrawn at the seller's discretion without notice at any time prior to or during the sale, property may be sold prior to Auction. All properties are being sold subject to confirmation unless otherwise indicated. Seller may reserve the right to deny admittance or to remove anyone at this auction that may disrupt this sale in any way. All statements made at the auction shall take precedence over all printed materials. The auctioneer shall not be responsible or liable in any way if the seller fails to honor any bid or refuses to close or cannot close title in accordance with the winning bid(s) or any sales contract; or if the property is contaminated with any type of hazardous waste or requires any repairs. It is the purchaser's responsibility to inspect all properties prior to bidding to verify all of his/her specifications. Agency Disclosure: Target Auction & Land Company, Inc. and its agents represent the seller only. Target Auction & Land Company, Inc. is the selling agent only.

AUCTION

Saturday, November 15th • 1:00pm (MT)

Kalispell, Montana

Montana Mountaintop Estate

200± Acres of Breathtaking Views

Saturday, November 15th • 1:00pm (MT)

AUCTION

Kalispell, Montana

Montana Mountaintop Estate

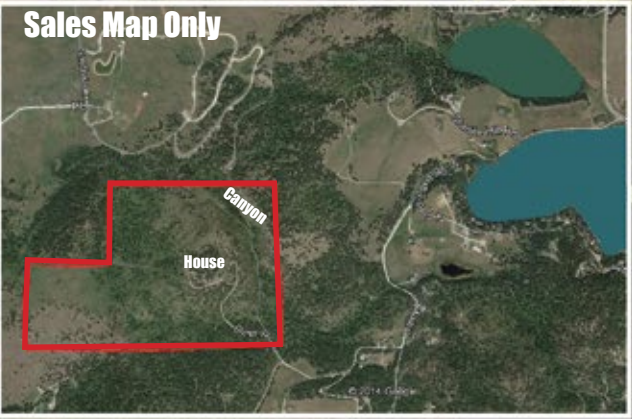
200± Acres of Breathtaking Views



TARGET AUCTION
ADVANCED REAL ESTATE MARKETING

800-476-3939
www.targetauction.com

Sales Map Only





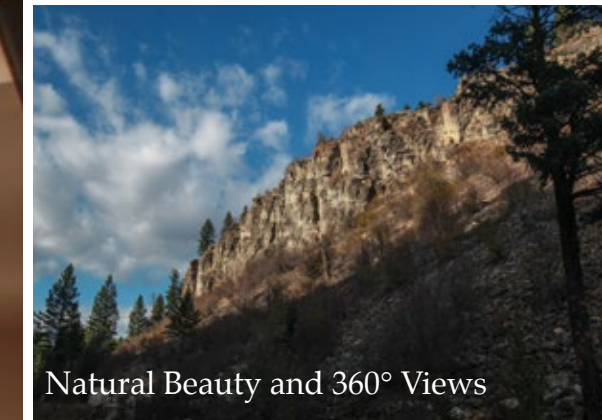
Features Include:

- Floor to Ceiling Rock Fireplace
- Tranquility Waterfall on back of Fireplace
- Spacious Great Room with 34' ft Ceiling
- Custom Ash Woodwork Throughout
- Gourmet Kitchen with Walk-In Pantry and Cold Storage
- 5 Bedrooms – 6 Baths – 2 Half Baths
- Over 12,000± sq ft under roof – with approximately 10,000± finished & heated
- Two 3 Car Garages
- 2 Guest Apartments
- Master Suite with Sitting Area
- An Original Smart Home
- Media Room
- Library with Built-In Bookcases Lining the Walls
- Office with Sitting Area & Deck
- Numerous Decks
- Pond with Fountain
- Gated Entry
- Security System – Safe Room
- Generator



Local Attractions:

- Only 10 minutes from Kalispell
- Flathead Lake and Glacier National Park are less than 30 minutes away
- Close to Theatre, Symphony, Arts and so much more!



Natural Beauty and 360° Views



Abundant Wildlife



200± acres



3600 ft. elevation

