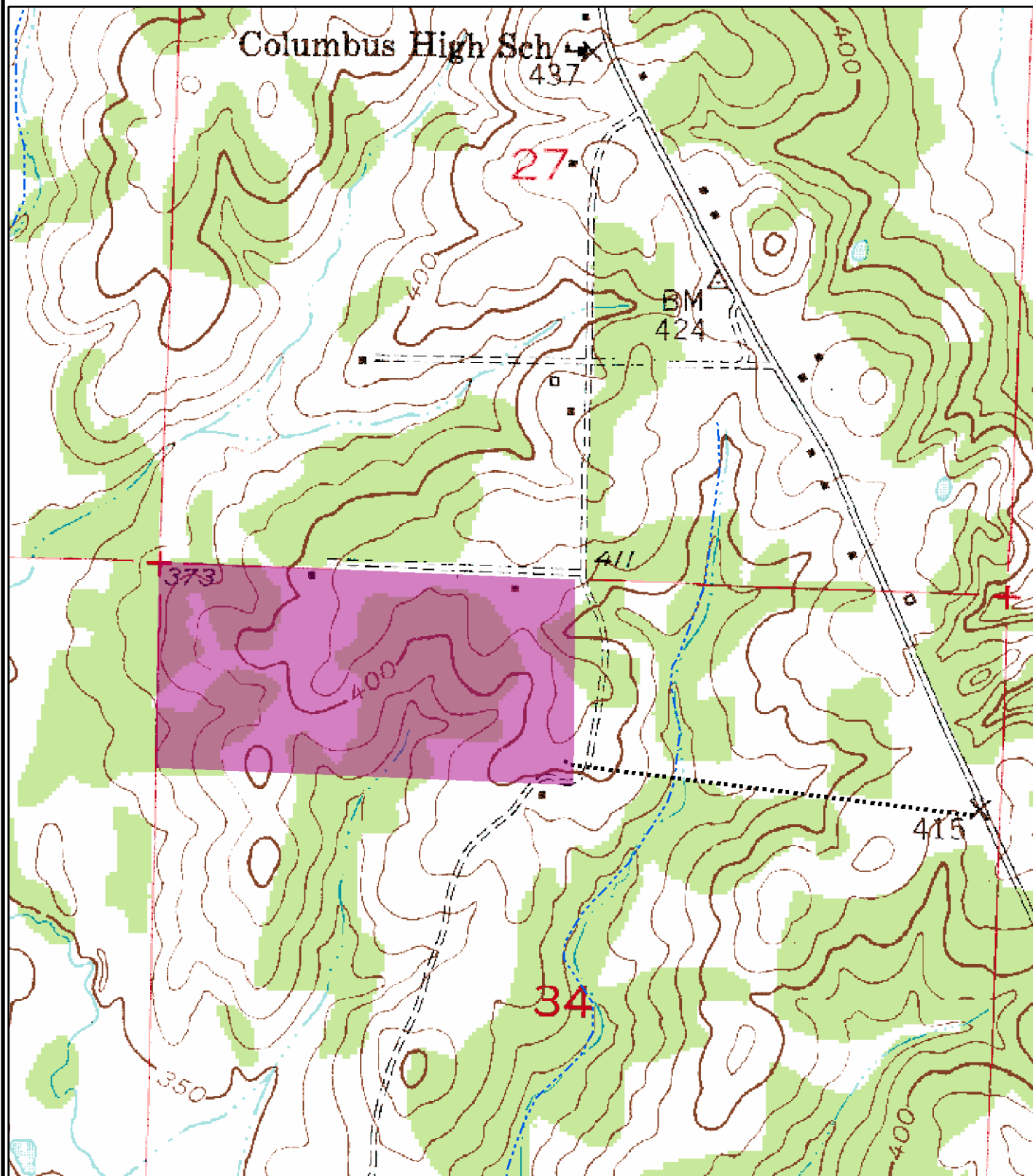


N½ of NW¼, Sec. 34, T11S, R26W, Hempstead County, Arkansas
containing 80 acres, more or less



A horizontal scale bar with three segments. The first segment is labeled '0', the second '0.125', and the third '0.25'. The word 'Miles' is at the right end of the bar.



Created: October, 2014
Drawn By: JDT