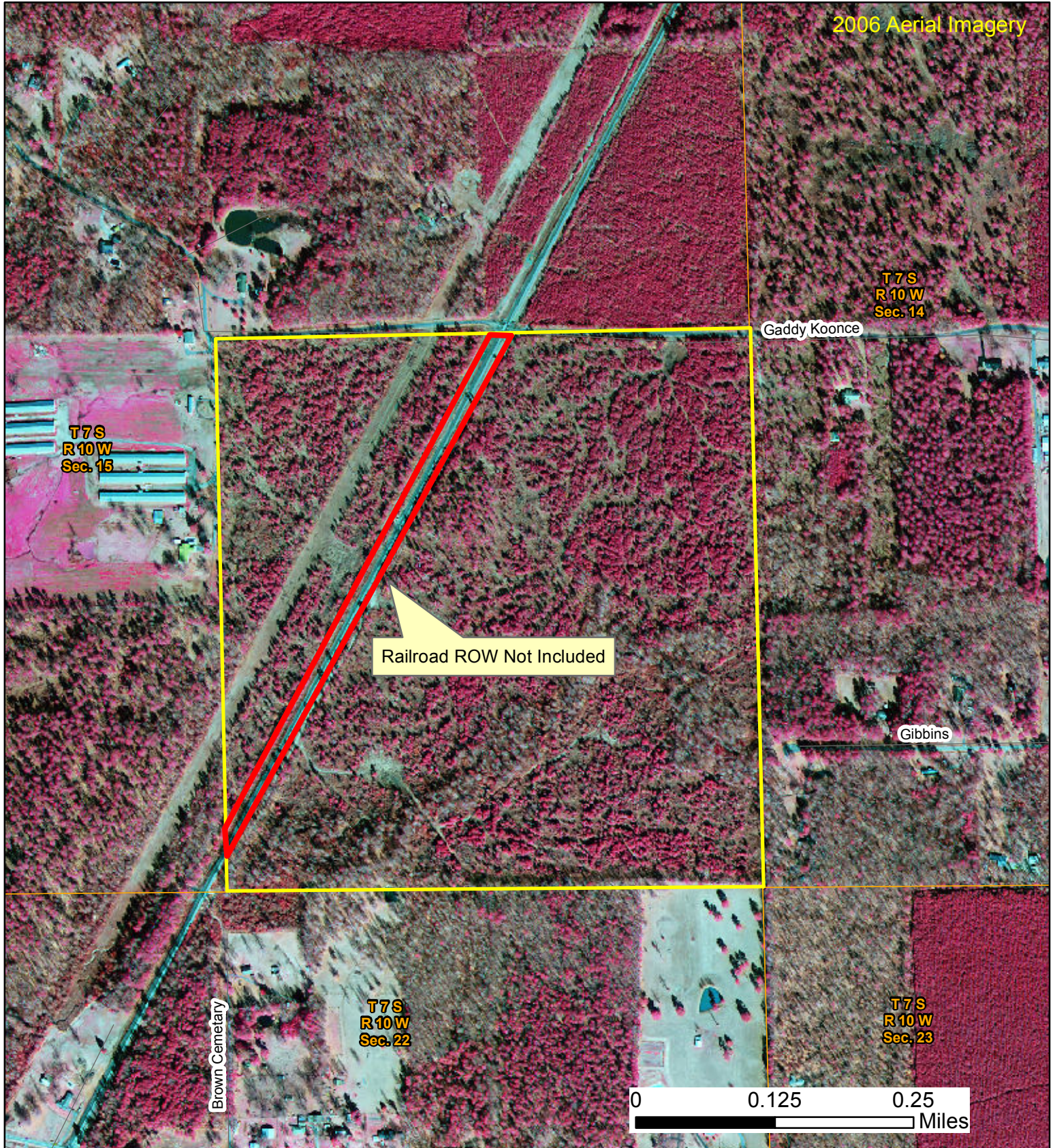


Glover

SE 1/4 Section 15, Township 7 South, Range 10 West, Jefferson County, AR,
LESS AND EXCEPT Railroad Right-of-Way located thereon, 155 acres, more or less



Phone: 1-888-695-8733
www.forestryrealestate.com



This map and all information it contains is provided "AS IS," as a courtesy to potential buyers. Potential buyers should make their own determination regarding the accuracy of the information provided. Neither the seller, Davis DuBose Knight Forestry & Real Estate PLLC (DDKFRE), their subsidiaries, affiliates nor representatives warrant the accuracy, adequacy or completeness of any information contained herein regarding the property, its condition, boundaries, access, acreage, or timber stand information. DDKFRE expressly disclaims liability for errors or omissions.