



FOR MORE INFORMATION ON
THIS LISTING, PLEASE CONTACT
Codi Aubuchont, Realtor
CELL: 254-679-1639
Cla@goregrouptexas.com

DISCLAIMER

Broker and/or Agent does not make any representations, warranties or covenants of any kind or character, whether expressed or implied, with respect to the quality or condition of the property, the suitability of the property for any and all activities and uses which purchaser may conduct there on, compliance by the property with any laws, rules, ordinances or regulations if any applicable governmental authority, or habitability, merchantability, or fitness for any particular purpose. All drawings are neither legally recorded maps nor surveys and are not intended to be used as such. The information contained herein has been obtained from sources deemed reliable. However, we cannot warrant the complete accuracy thereof subject to errors, omissions, change of price, rental or other conditions, prior to sale, lease or financing, or withdrawal without notice. Broker and/or Agent does not make any representation regarding hazardous waste, as defined by the Texas Solid Waste Disposal Act and the regulations adopted there under, or the United States Environmental Protection Agency regulations or disposal or any other hazardous or toxic substance in or on the property; or the Endangered Species Act of 1973; or for live oak decline, oak wilt, or any other natural phenomena.



2424 E MAIN ST.,
GATESVILLE, TX 76528
www.GoreGroupTexas.com



**Peaceful 30
Recreational
Acres**



**TBD CR 128
Arnett, TX 76528
\$135,000**

Text 'PROPID 409439' to 46786

GORE REAL ESTATE GROUP
2424 E. Main Street, Gatesville, TX 76528
254-248-0809 ~ 254-206-0915
www.GoreGroupTexas.com

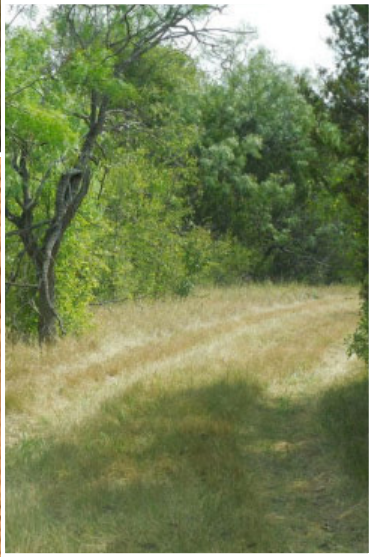
Aerial Map



Hunting Trailer on Back of Property

Roads Throughout

Large Tank



Boundary Lines Are An Approximation And Are Not Exact

Topographical Map



Property Information Overview

Acreage.....	30
Location.....	TBD CR 128, Gatesville, TX 76528
Price.....	\$135,000/\$4,500 Acre
Taxes w/out Exemptions....	\$3,348
School District.....	Gatesville ISD
Highest/Best Use.....	Residential, Agricultural
Trees.....	Oak, Cedar, Mesquite, Hackberry
Surface Water.....	1 Large Tank, 1 Small Tank
Topography.....	Level, Flat, Rolling
Wildlife.....	Deer, Hog, Dove
Utilities.....	Septic Tank, Hamilton Co. Electric, Multi Co. Water
Distance from Houston.....	210 Miles
Distance from Austin.....	90 Miles
Distance from Dallas.....	135 Miles

From Coryell County Courthouse head west on Main Street/US 84 approximately 8 miles, turn left on CR 128 – first left after Arnett, TX sign. Stay on CR 128 for approximately 2.7 miles, property will be on the right side. Look for sign.

Boundary Lines Are An Approximation And Are Not Exact

