

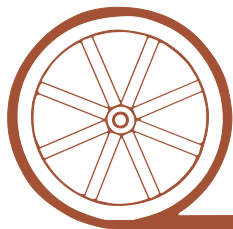
# LAND FOR SALE

## Sidney Pasture & Development



- Location:** Joins north edge of Sidney, Nebraska city limits on west side of County Road 113.
- Legal Description:** Pt. of NE1/4 Section 30-T14N-R49W of the 6th P.M., Cheyenne County, Nebraska.
- Acres:** 100.002 tax assessed acres
- Taxes:** 2013 taxes payable in 2014 - \$1,287.24
- Price:** \$120,000
- Comments:** This is a good piece of pasture with excellent housing development potential on the north edge of Sidney. It has city water lines through the south edge of the property and county road along the east edge of the property.
- Contact:** **Roger Luehrs; Co-Listing Agent 308-631-2506 or [roger@agriaffiliates.com](mailto:roger@agriaffiliates.com)**  
**Mike Polk; Co-Listing Agent 308-539-4446 or [mike@agriaffiliates.com](mailto:mike@agriaffiliates.com)**  
Jerry Weaver, Bruce Dodson, Tony Eggleston, Don Walker, Greg Polk, Chase Dodson

*Offered Exclusively By:*



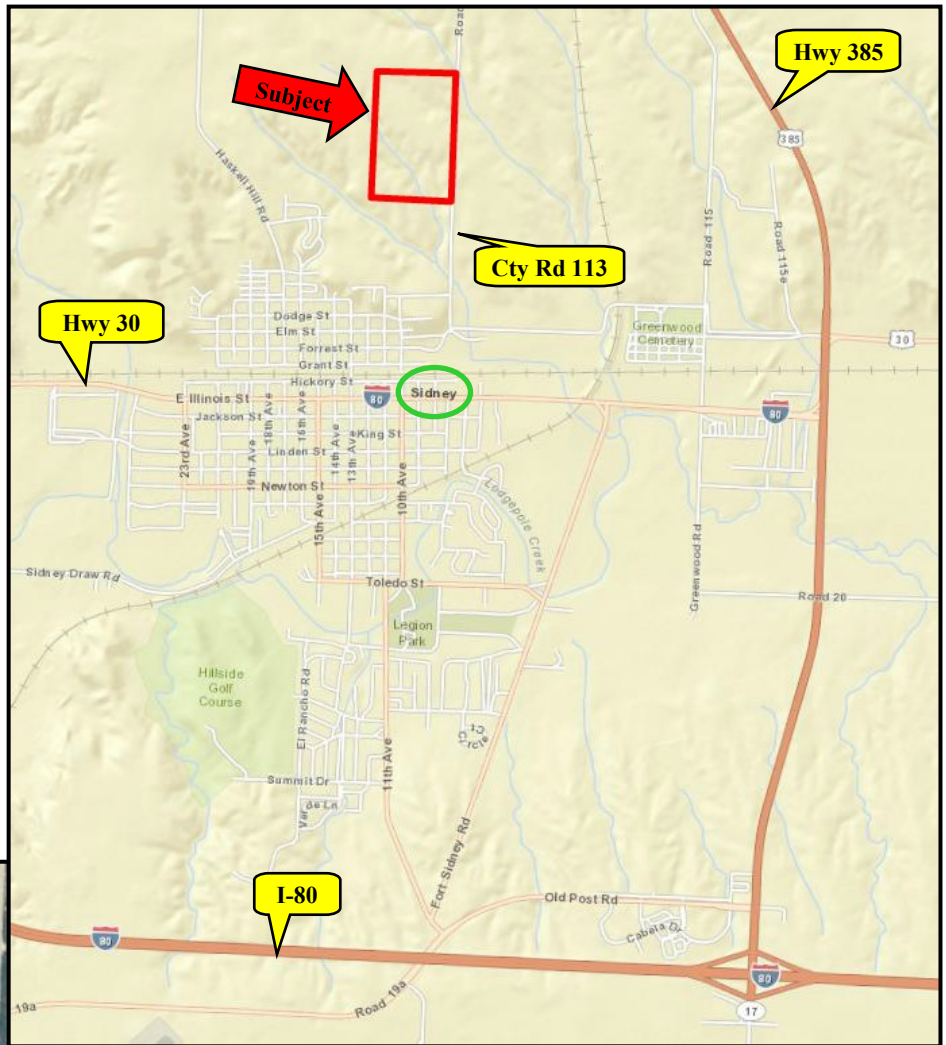
## AGRI AFFILIATES, INC.

*...Providing Farm - Ranch Real Estate Services...*

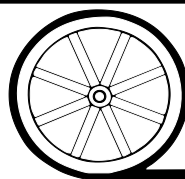
**NORTH PLATTE OFFICE**  
P.O. Box 1166  
I-80 & US Hwy 83  
North Platte, NE 69103  
[www.agriaffiliates.com](http://www.agriaffiliates.com)  
**(308) 534-9240**  
Fax (308) 534-9244

Information contained herein was obtained from sources deemed reliable. We have no reason to doubt the accuracy, but we do not guarantee it. Prospective Buyers should verify all information, including items of income and expense. All maps provided by Agri Affiliates, Inc. are approximations only, to be used as a general guideline, and not intended as survey accurate.





All maps provided by Agri Affiliates, Inc. are approximations only, to be used as a general guideline, and not intended as survey accurate.



**AGRI AFFILIATES, INC.**

*... Providing Farm - Ranch Real Estate Services. . .*