

32.18 Acres M/L Warren County, Iowa



Price: \$85,000

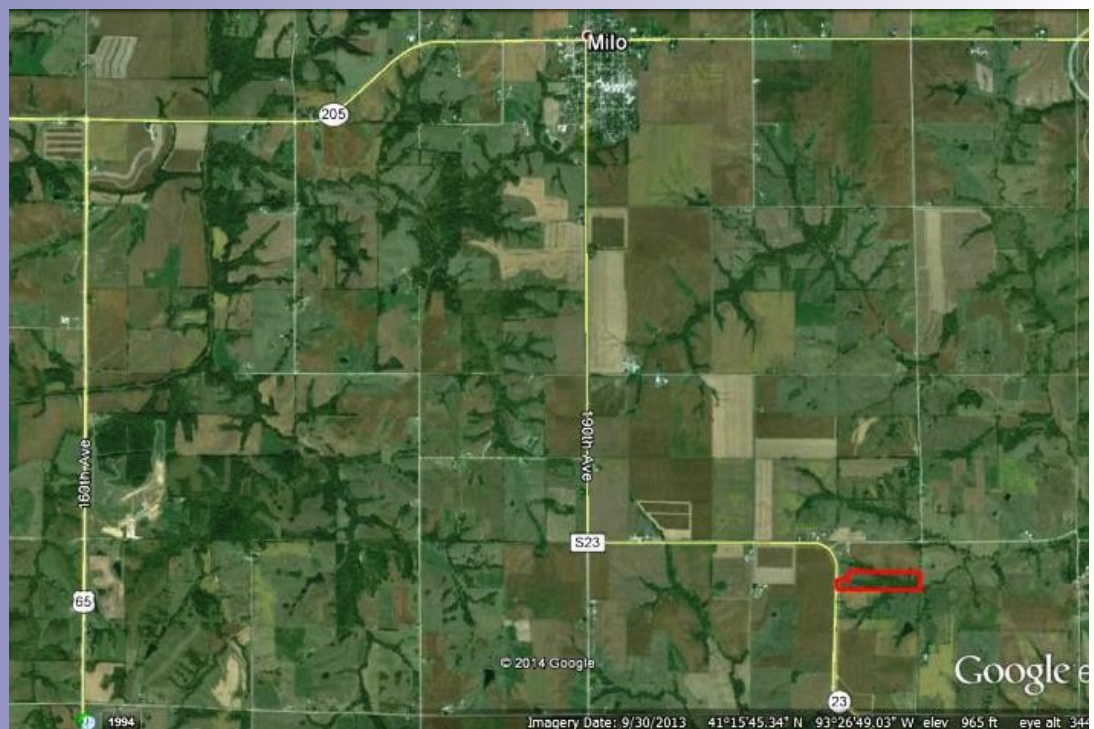
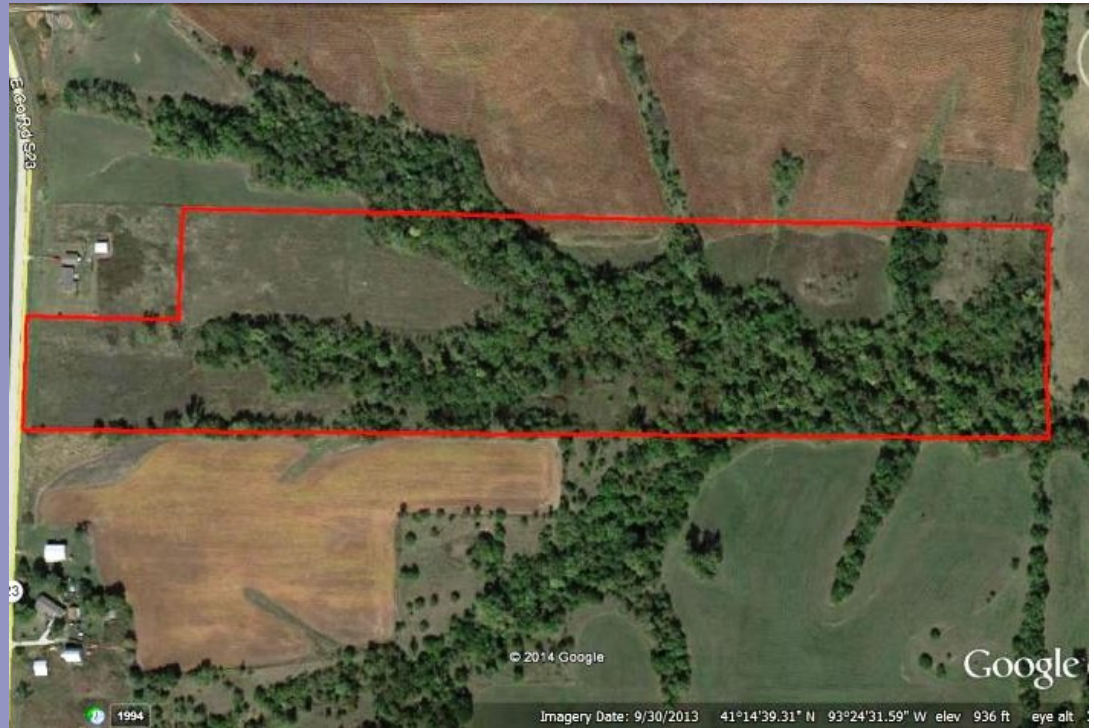
Description: Great opportunity to own affordable recreation ground on pavement in Warren County! Mature timber with a small creek running through it creates an excellent habitat for wildlife and approximately 12 acres m/l of openings provide areas for food plots or grass/hay income. Excellent spot to build your dream home or have a weekend getaway!

Farm Program Information:
N/A

Directions: From Milo: Travel South on S23 Highway for 4.5 miles. Property will be on the East side of the road. Look for sign.

Taxes: \$142.58

Daran Becker
P: 515.961.0247
C: 515.979.3498
Daran@PeoplesCompany.com



Additional information can be found on our website: **LISTING # 12052**

© 2014 Peoples Company We obtained the information above from sources we believe to be reliable. However, we have not verified its accuracy and make no guarantee, warranty or representation about it. It is submitted subject to the possibility of errors, omissions, change of price, rental or other conditions, prior sale, lease or financing, or withdrawal without notice. We include projections, opinions, assumptions or estimates for example only and they may not represent current or future performance of the property. You and your tax and legal advisors should conduct your own investigation of the property and transaction.