

36 Acres M/L Warren County, Iowa



Price: \$158,000

Description: 36 Acres M/L. 30.9 tillable acres with an Average CSR2 of 56.4. Ridge is 74CSR! Good fences, nice tidy parcel. Nice building site and area for a pond.

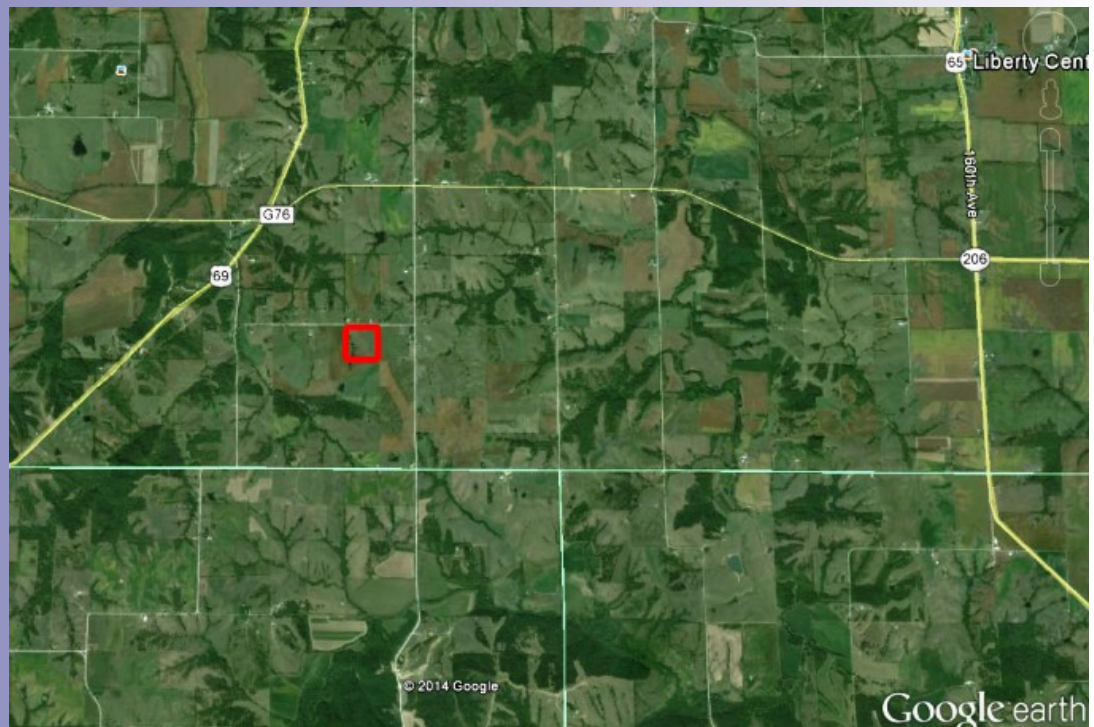
Farm Program Information:
CRP payment (final one) goes to Seller. Seller will remove hay after Sept. 30, 2014

Directions: G76 Hwy East of Medora to 120th South to Virginia St. West 1/2 mile, South side of road.

Legal Description: 36 Acres M/L, Sect. 35-74N-24W, Squaw township. NW NE exc West 4 Ac.

Taxes: \$420.00

John Hutchcroft
P: 515.961.0247
C: 515.321.5970
JohnH@PeoplesCompany.com



© 2014 Peoples Company We obtained the information above from sources we believe to be reliable. However, we have not verified its accuracy and make no guarantee, warranty or representation about it. It is submitted subject to the possibility of errors, omissions, change of price, rental or other conditions, prior sale, lease or financing, or withdrawal without notice. We include projections, opinions, assumptions or estimates for example only and they may not represent current or future performance of the property. You and your tax and legal advisors should conduct your own investigation of the property and transaction.

Additional information can be found on our website: **LISTING # 12050**