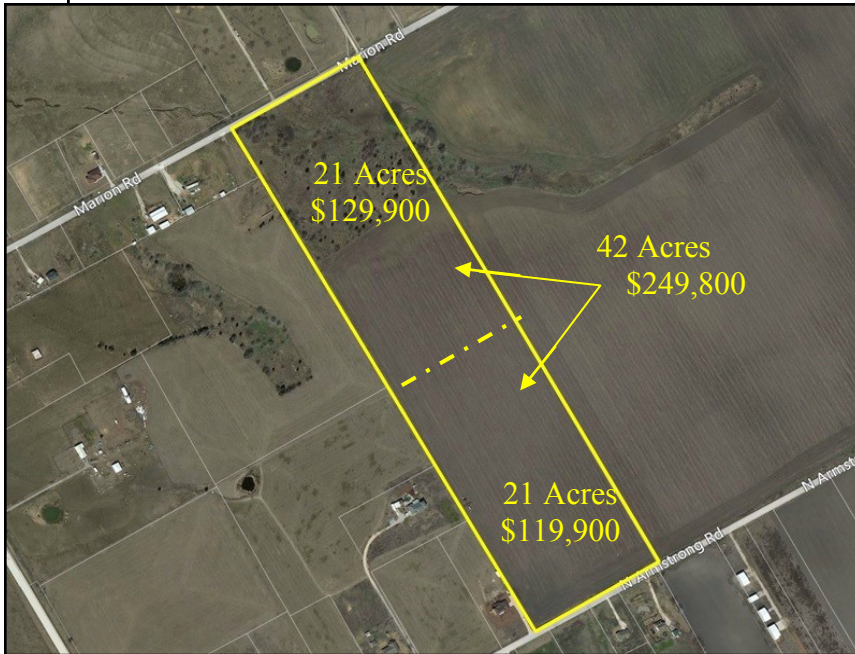


Hi View
REAL ESTATE

Farm & Ranch, Commercial,
Investment Properties, Recreation Land and Homes

Brett Hess
214-207-5431
brett@hiviewrealestate.com

FOR SALE
21 +/- Acres Maypearl Tx.
Marion Rd. and Armstrong Rd.



Two 21 Acre Tracts

Great area and location. Both lots have trees, while Marion is heavily treed. Very nice neighboring properties. Excellent building sites on both properties. Easy access to FM 157, Venus and Maypearl. Located in Maypearl ISD. Best priced 21 acre tracts in the area.
MINERALS RESERVED



1007 Ferris Ave | Waxahachie, TX 75165 | Ofc. 469-517-0012 | Fax 469-517-0015
www.hiviewrealestate.com

Information contained herein has been obtained from the owner of the property or obtained from other sources that we deem reliable. We have no reason to doubt its accuracy, but we do not guarantee it.

Hi View
REAL ESTATE

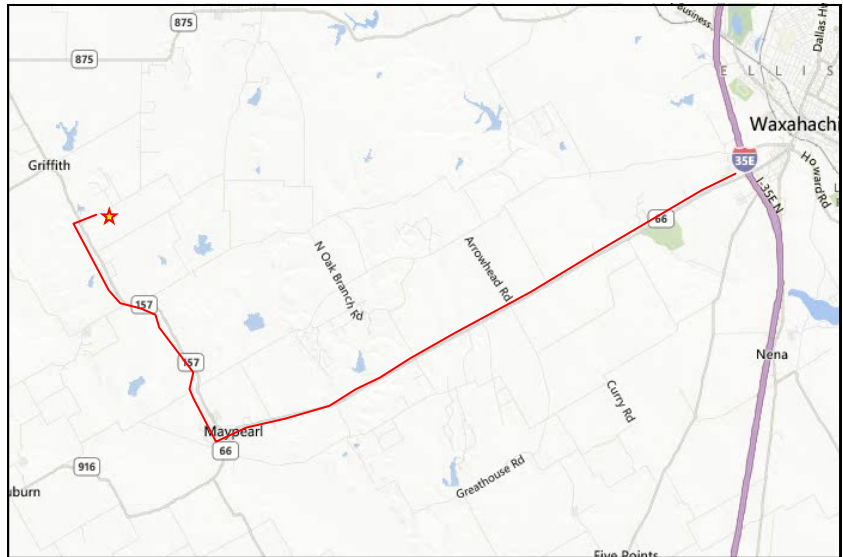
Farm & Ranch, Commercial,
Investment Properties, Recreation Land and Homes

Brett Hess
214-207-5431
brett@hiviewrealestate.com

FOR SALE
21 +/- Acres Maypearl Tx.
Marion Rd. and Armstrong Rd.

Directions

From Venus, Go South on
FM 157 to Marion or
Armstrong and go east.
From Maypearl go North
on FM 157 to Armstrong
or Marion.
SIGNS OF PROPERTIES



1007 Ferris Ave | Waxahachie, TX 75165 | Ofc. 469-517-0012 | Fax 469-517-0015
www.hiviewrealestate.com

Information contained herein has been obtained from the owner of the property or obtained from other sources that we deem reliable.
We have no reason to doubt its accuracy, but we do not guarantee it.