

# PROPERTY FOR SALE

Washington Twp • Porter County

***119<sup>+/-</sup> Acres***

***112.3<sup>+/-</sup> Tillable • 2.7<sup>+/-</sup> Acre Homesite***

***Quality Farmland  
Near Valparaiso***

## Property Information

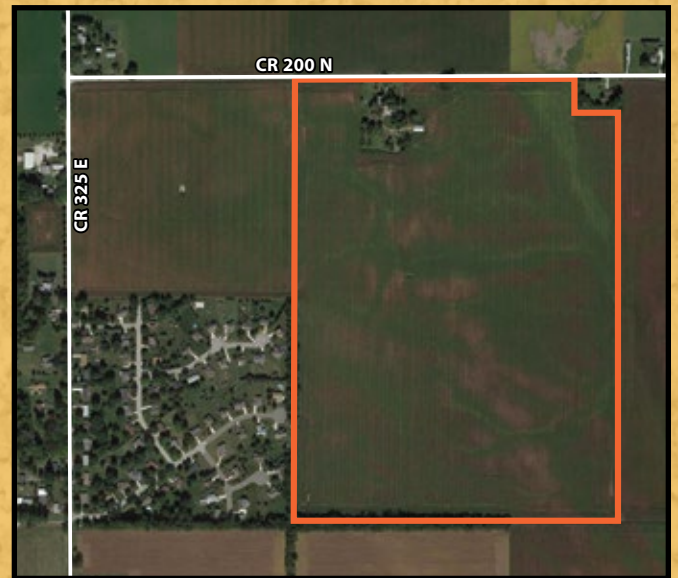
**LOCATION:** 1 mile north of the Porter County Airport on the south side of CR 200 N, 0.25 mile east of CR 325 E

**ZONING:** Agricultural

**TOPOGRAPHY:** Level - Gently Rolling

**SCHOOLS:** East Porter County School Corp.  
Washington Township Middle/High School

**ANNUAL TAXES:** \$6,028.00



**LARRY SMITH**

**219-362-4041**

**[larrys@halderman.com](mailto:larrys@halderman.com)**

**MIKE GENTRY**

**219-851-7672**

**[michaelg@halderman.com](mailto:michaelg@halderman.com)**

**HALDERMAN**  
**REAL ESTATE**  
HLS# LAS-11493 (14)  
**SERVICES**



**800.424.2324 | [www.halderman.com](http://www.halderman.com)**



**FOR SALE**  
**119<sup>±</sup> Acres**

**Quality Farmland Near Valparaiso  
Country Home & Outbuildings**

**Washington Twp • Porter County**

**Soils Information**



**House Details**

**360 E 200 N  
Valparaiso, IN 46383**

- 1,608 sq ft
- 3 Bedrooms
- 2 Bathrooms
- Detached Garage

Code	Soil Description	Acres	Corn	Soybeans	Winter Wheat
DoA	Door loam, 0 to 2 percent slopes	55.61	140	49	70
LyA	Lydick loam, 0 to 2 percent slopes	19.44	145	49	73
TcB	Tracy sandy loam, 2 to 6 percent slopes	18.49	105	37	53
TcC	Tracy sandy loam, 6 to 12 percent slopes	5.93	95	33	48
Sb	Sebewa loam, shaly sand substratum	5.01	130	33	52
RIB	Riddies silt loam, 2 to 6 percent slopes	4.99	145	51	73
LyB	Lydick loam, 2 to 6 percent slopes	1.90	145	49	73
RmC2	Riddies loam, 6 to 12 percent slopes, eroded	0.54	130	46	65
RIA	Riddies silt loam, 0 to 2 percent slopes	0.31	145	51	73
Wh	Washtenaw silt loam	0.09	165	49	66
Weighted Average		132.6	45.5	65.9	

**Home and buildings may be  
seen by appointment only.**

**Please contact:**

**Larry Smith: 219-362-4041**

**Mike Gentry: 219-851-7672**

