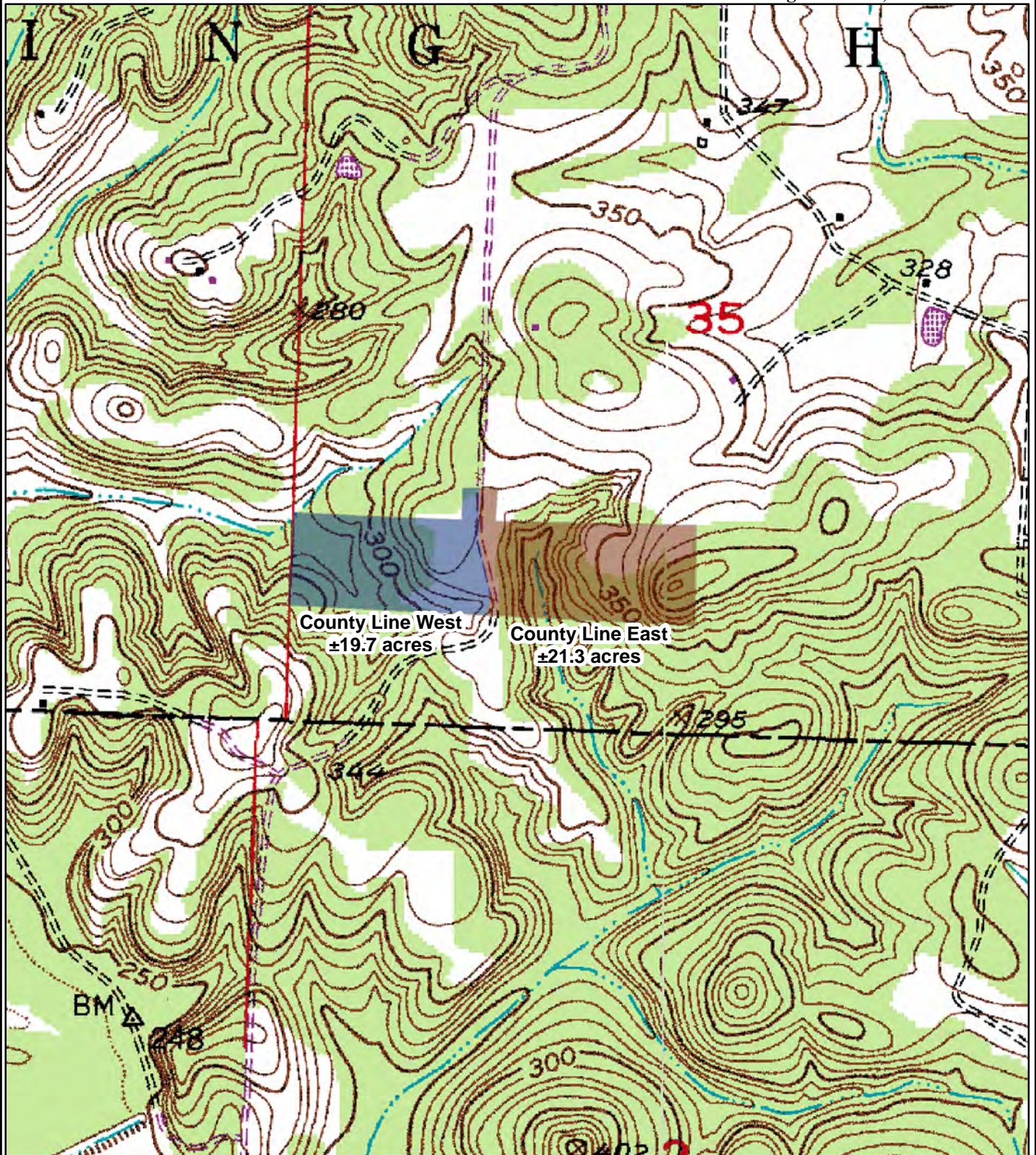


"County Line West Tract" - Listing #4451
Pt. N $\frac{1}{2}$ of S $\frac{1}{2}$ of SW $\frac{1}{4}$ and Pt. NW $\frac{1}{4}$ of SW $\frac{1}{4}$,
lying west of road, Sec. 35, T14S, R25W
Hempstead County, Arkansas
Containing 19.7 acres, more or less

NOTICE OF LAND SALES

"County Line East Tract" - Listing #4436
Pt. N $\frac{1}{2}$ of S $\frac{1}{2}$ of SW $\frac{1}{4}$ and Pt. NW $\frac{1}{4}$ of SW $\frac{1}{4}$,
lying east of road, Sec. 35, T14S, R25W
Hempstead County, Arkansas
Containing 21.3 acres, more or less



0 0.125 0.25
Miles



Created: June, 2014
Drawn By: JDT