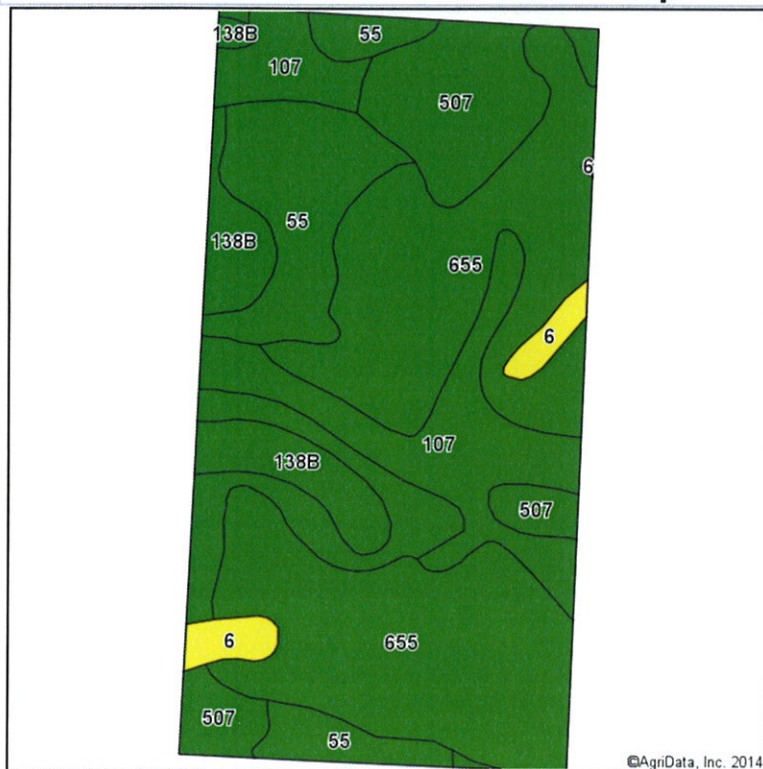
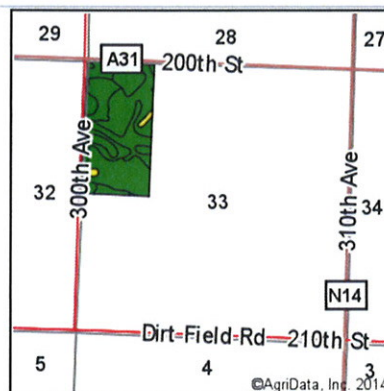


Soils Map-CSR2



Soils data provided by USDA and NRCS.



State: **Iowa**
 County: **Dickinson**
 Location: **33-99N-35W**
 Township: **Richland**
 Acres: **76.54**
 Date: **7/11/2014**

MIDWEST LAND
 712-262-3110 MANAGEMENT



Maps Provided By:



© AgriData, Inc. 2014 www.AgriDataInc.com

Soils Version

latest

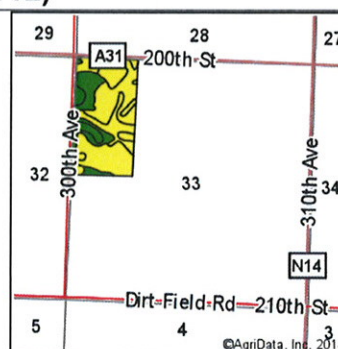
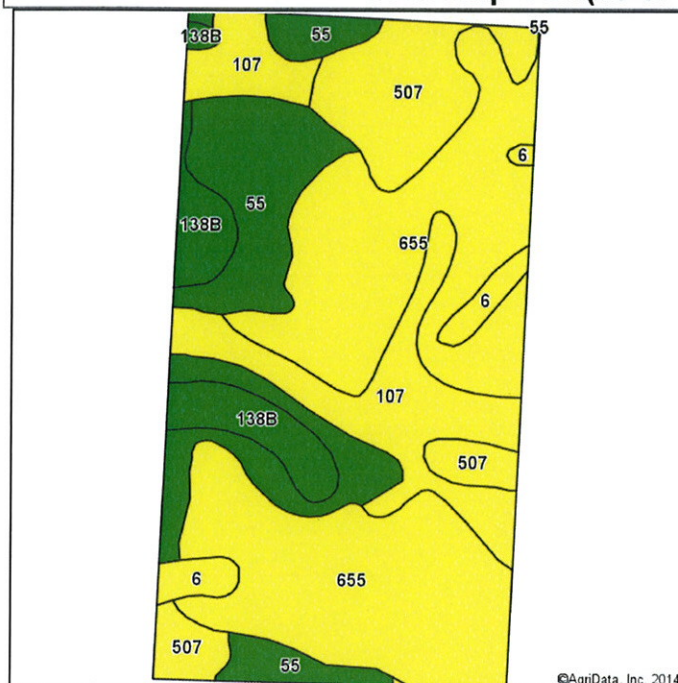
Area Symbol: IA059, Soil Area Version: 22

Code	Soil Description	Acres	Percent of field	**CSR2 Legend	Non-Irr Class	CSR2**	CSR
655	Crippin loam, 1 to 3 percent slopes	33.17	43.3%		I	89	71
55	Nicollet loam, 1 to 3 percent slopes	15.40	20.1%		I	91	73
107	Webster silty clay loam, 0 to 2 percent slopes	11.46	15.0%		IIw	87	70
507	Canisteo silty clay loam, 0 to 2 percent slopes	9.20	12.0%		IIw	82	71
138B	Clarion loam, 2 to 6 percent slopes	5.40	7.1%		Ile	90	73
6	Okoboji silty clay loam, 0 to 1 percent slopes	1.91	2.5%		IIIw	58	43
Weighted Average						87.6	70.7

**IA has updated the CSR values for each county to CSR2.

Field borders provided by Farm Service Agency as of 5/21/2008. Aerial photography provided by Aerial Photography Field Office.

Soils Map-CSR(as of 1/21/12)


 Soils Version
 1/21/2012 ▼

 State: Iowa
 County: Dickinson
 Location: 33-99N-35W
 Township: Richland
 Acres: 78.96
 Date: 7/22/2014

 REAL ESTATE, INC.
MIDWEST LAND
 712-262-3110
 MANAGEMENT

 Maps Provided By:

 surety
 CUSTOMIZED ONLINE MAPPING
 © AgriData, Inc. 2014 www.AgriDataInc.com

Soils data provided by USDA and NRCS.

©AgriData, Inc. 2014

Viewing soils data as of 1/21/2012

Code	Soil Description	Acres	Percent of field	*CSR Legend	Non-Irr Class	CSR*	Corn	Soybeans
655	Crippin loam, 1 to 3 percent slopes	35.00	44.3%		I	71	181	58
55	Nicollet loam, 1 to 3 percent slopes	15.08	19.1%		I	73	183	59
107	Webster silty clay loam, 0 to 2 percent slopes	11.95	15.1%		IIw	70	179	57
507	Canisteo silty clay loam, 0 to 2 percent slopes	9.71	12.3%		IIw	71	180	58
138B	Clarion loam, 2 to 5 percent slopes	5.11	6.5%		Ile	73	183	59
6	Okoboji silty clay loam, 0 to 1 percent slopes	2.11	2.7%		IIIw	43	143	46
Weighted Average						70.6	180.1	57.8

*The CSR ratings are dated 1/21/2012 and will be available to aid in the transition to CSR2.

Field borders provided by Farm Service Agency as of 5/21/2008. Aerial photography provided by Aerial Photography Field Office.