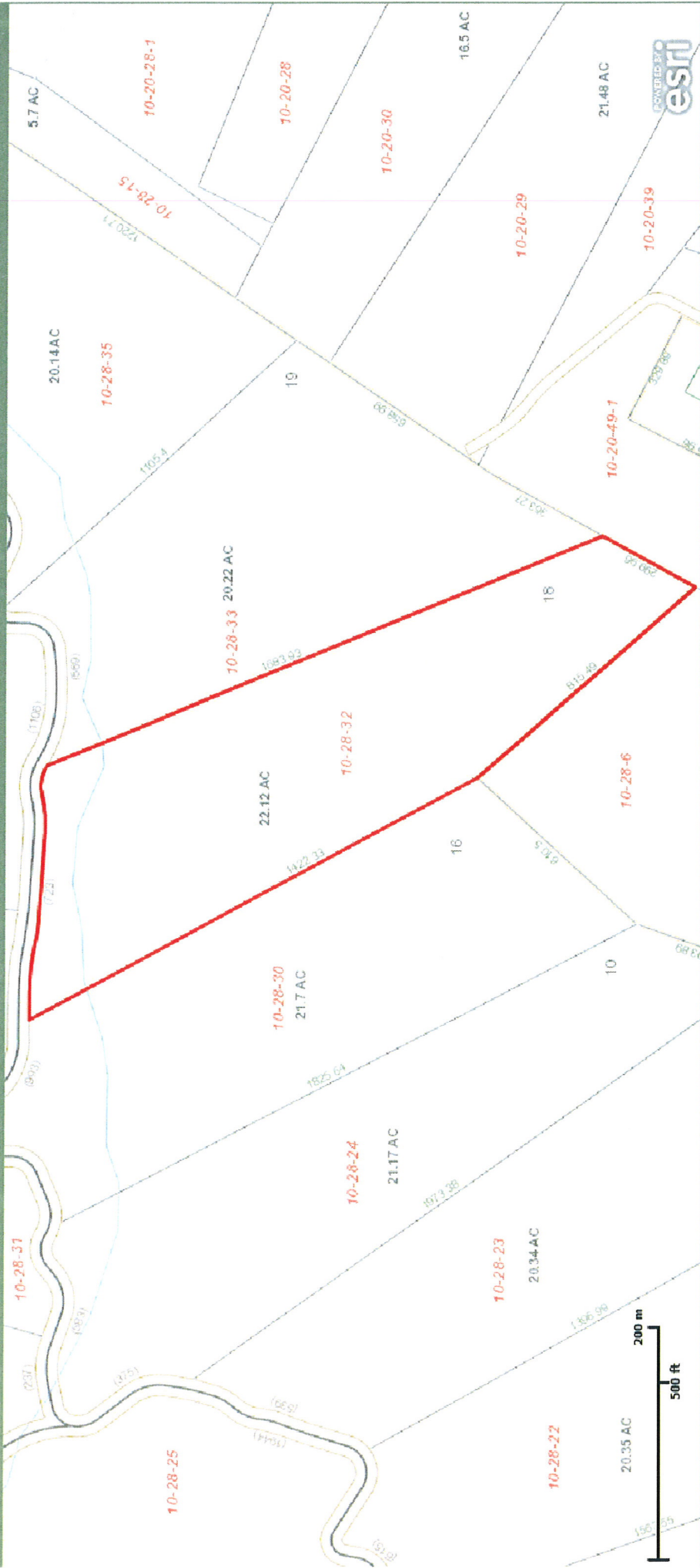


# My Map

Brown Lot 18



Copyright 2011 Hampshire County, WV All rights reserved. Thu Jun 26 2014 02:24:12 PM.



# My Map

Brown Lot 18



Copyright 2011 Hampshire County, WV/All rights reserved. Thu Jun 26 2014 02:24:28 PM.



# Brown



This map is not the official regulatory FIRM or DFIRM. Its purpose is to assist with determining potential flood risk for the selected location.

Map Created on 6/26/2014



Location of the mouse click



**Flood Hazard Zone**  
(1% annual chance floodplain)

## User Notes:

## Disclaimer:

The online map is for use in administering the National Flood Insurance Program. It does not necessarily identify all areas subject to flooding, particularly from local drainage sources of small size. To obtain more detailed information in areas where Base Flood Elevations have been determined, users are encouraged to consult the latest Flood Profile data contained in the official flood insurance study. These studies are available online at [www.msc.fema.gov](http://www.msc.fema.gov).

WV Flood Tool is supported by FEMA, WV NFIP Office, and WV GIS Technical Center  
(<http://www.MapWV.gov/flood>)

## Flood Hazard Area:

**Elevation:** About 720 feet

**Location (long, lat):** 78.666071 W, 39.503628 N

**Location (UTM 17N):** (700669, 4375268)

**FEMA Issued Flood Map:** 54027C0020C

**Contacts:** Hampshire County

**CRS Information:** Hampshire County

**Parcel Number:**