

FOR SALE

320 ACRES CROPLAND

LOGAN COUNTY, KS

LEGAL DESCRIPTION: N/2 of 21-14-36

LOCATION: From the corner where Hwy 25 turns South, west of Russell Springs, Kansas, go 4 miles South to Kiowa Road, then 2 miles East to Rd. 180, and 1 mile South to the NW corner of the property. **SIGNS WILL BE POSTED!**

MINERAL RIGHTS: 50% of the mineral rights are believed to be intact, with an additional 25% believed to be subject to a term reservation through 2017. 25% of the mineral rights are believed to be reserved perpetually. All of the Seller's interest will transfer to the Buyer at closing.

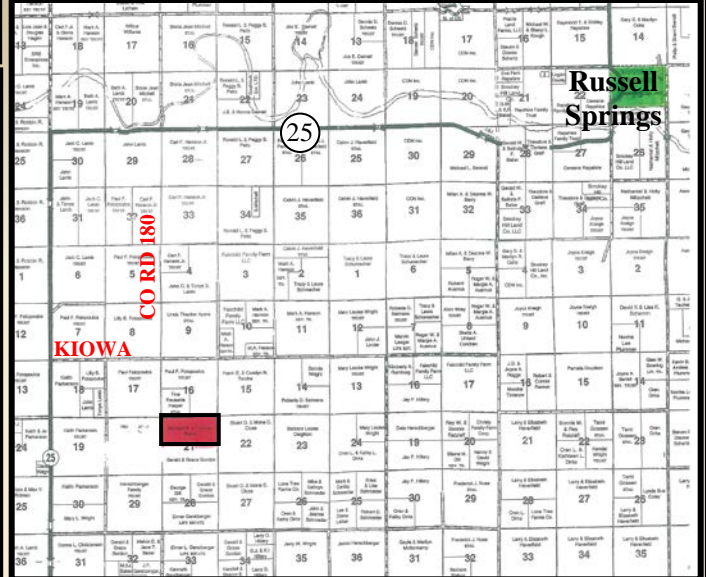
CROPS: Seller will retain 100% of the 2014 wheat crop.

FSA INFORMATION: Approximately 318.0± cropland acres. All FSA farm program payments associated with the 2014 crop year will be subject to the new Farm Bill provisions.

POSSESSION: After 2014 wheat harvest.

REAL ESTATE TAXES: Seller will pay taxes for 2013 and prior years. Taxes for 2014 will be the prorated to date of closing. (2013 taxes = \$676.88)

PRICE: \$600,000



Note: Seller is entering into a 1031 exchange and the sale is subject to completion of the exchange.

Statements, While Not Guaranteed, Are From Reliable Sources.



FOR A VIRTUAL TOUR VISIT www.farmandranchrealty.com



FARM & RANCH REALTY, INC.



1420 W. 4th • Colby, KS 67701
(800) 247-7863 Toll Free

DONALD L. HAZLETT, BROKER

"When you list with Farm & Ranch, it's as good as SOLD!"



Donald L. Hazlett, Broker