

# Wayne County 70 Acres M/L



**Price:** \$255,500 (\$3650 per/acre)

**Description:** 70 Acres M/L located just north of Corydon, Iowa. Farm consists of 55 acres of CRP with a pond and a newer log cabin. Great place to hunt with income!

**Annual Taxes:** \$552.00

**CRP Information:**

8 acres enrolled through 9/30/2021 paying \$76.02 per acre for a total annual payment of \$608.

47 acres enrolled through 9/30/2016 paying \$76.02 per acre for a total annual payment of \$3,573.

**Directions:** From Corydon, travel north on Hwy 14 for 6 miles. Turn west on CoRd J22 (128th). After 1.5 miles, turn north on 120th. Farm is located on east side of the road after 2.5 miles.

**Steve Bruere**

Office: 515.222.1347

Cell: 515.240.7500

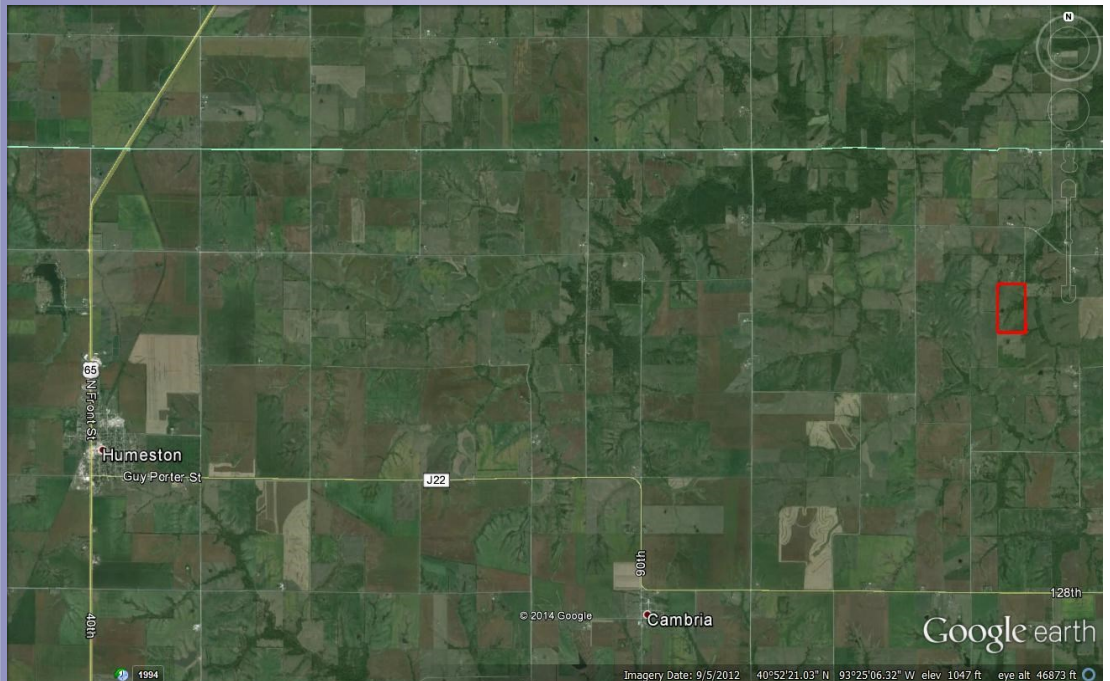
Steve@PeoplesCompany.com

**Brad VanWeelden**

Office: 855.800.5263

Cell: 515.745.4079

Brad@BradVanWeelden.com



Additional information such as CRP contracts, FSA maps, soils maps and lease information can be obtained by contacting listing agents or on PeoplesCompany.com under listing number: **#11916**

© 2014 Peoples Company We obtained the information above from sources we believe to be reliable. However, we have not verified its accuracy and make no guarantee, warranty or representation about it. It is submitted subject to the possibility of errors, omissions, change of price, rental or other conditions, prior sale, lease or financing, or withdrawal without notice. We include projections, opinions, assumptions or estimates for example only and they may not represent current or future performance of the property. You and your tax and legal advisors should conduct your own investigation of the property and transaction.