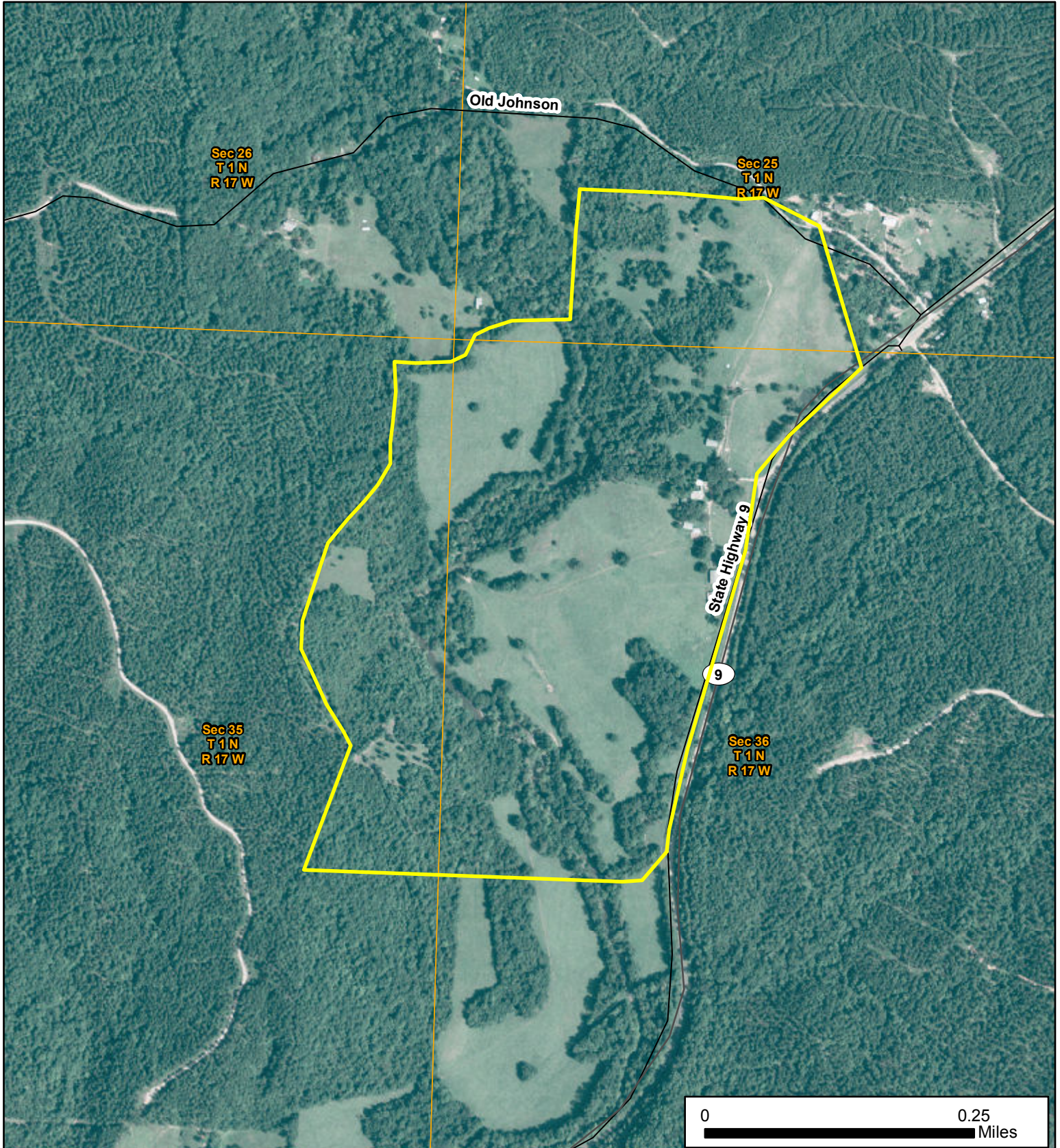


# Lee Creek Farm

Part of the Southwest 1/4 of Section 25, Part of the East 1/4 of Section 35,  
and Part of the North West 1/4 of Section 36, All Lying West and North of AR State Hwy 9,  
Township 1 North, Range 17 West, Saline County, AR, 135 acres more or less.



**DAVIS DUBOSE KNIGHT**  
FORESTRY & REAL ESTATE PLLC



Phone: 1-888-695-8733  
[www.forestryrealestate.com](http://www.forestryrealestate.com)

This map and all information it contains is provided "AS IS," as a courtesy to potential buyers. Potential buyers should make their own determination regarding the accuracy of the information provided. Neither the seller, Davis DuBose Knight Forestry & Real Estate PLLC (DDKFRE), their subsidiaries, affiliates nor representatives warrant the accuracy, adequacy or completeness of any information contained herein regarding the property, its condition, boundaries, access, acreage, or timber stand information. DDKFRE expressly disclaims liability for errors or omissions.