

## **+/- 155 ACRES, BUTLER TWP. VERMILION COUNTY, IL**



Travis Selby, Sales Agent & Marketing Specialist  
27 East Liberty Lane | Danville, IL 61832 | Phone  
217.304.1686  
travis@ag-exchange.com

### **Location**

Vermilion, Illinois

### **Acreage**

+/- 155.89 (149.40 tillable)

### **Predominant Soils**

### **Lease**

No Lease  
Open farm tenancy for 2014.  
New owner will be responsible for fall  
tillage and lime reimbursement.

### **Asking Price**

\$1,270,503 (\$8,150/acre)

### **Taxes**

\$665

### **Building Improvements**

None

### **Possession**

After Closing

### **Property Type**

Row Crop

Legal Desc: +/- 155.89 Acres located in the south ½ of the northeast ¼ and the north ½ of the southeast ¼ of section 14, T23N – R14W, West Part Butler TWP. Vermilion County, IL.

Notes: +/- 155.89 Acres located in the south ½ of the northeast ¼ and the north ½ of the southeast ¼ of section 14, T23N – R14W, West Part Butler TWP. Vermilion County, IL.

+/- 149.40 acres cropland.  
+/- 137.80 acres effective cropland.  
+/- 11.60 acres CRP paying \$2,613 through 2022.  
Open farm tenancy for 2014.  
New owner will be responsible for fall tillage and lime reimbursement.

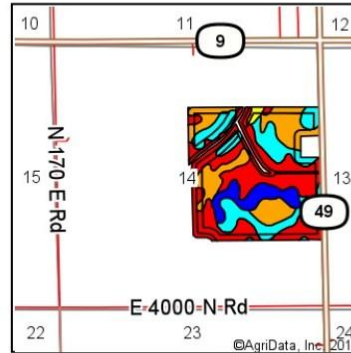
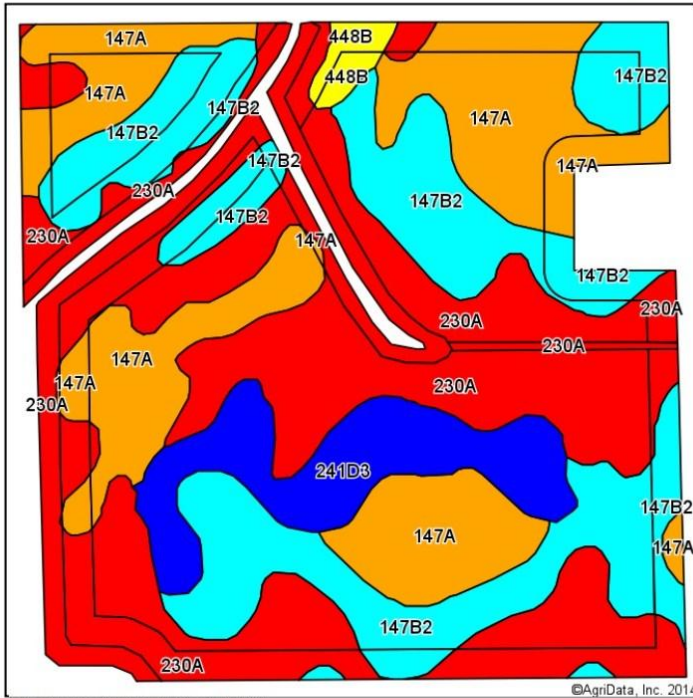
Farm is located a ¼ mile south of Rankin, IL.

Contact Travis Selby for additional information.  
217.304.1686    travis@ag-exchange.com

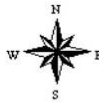




### Soil Map

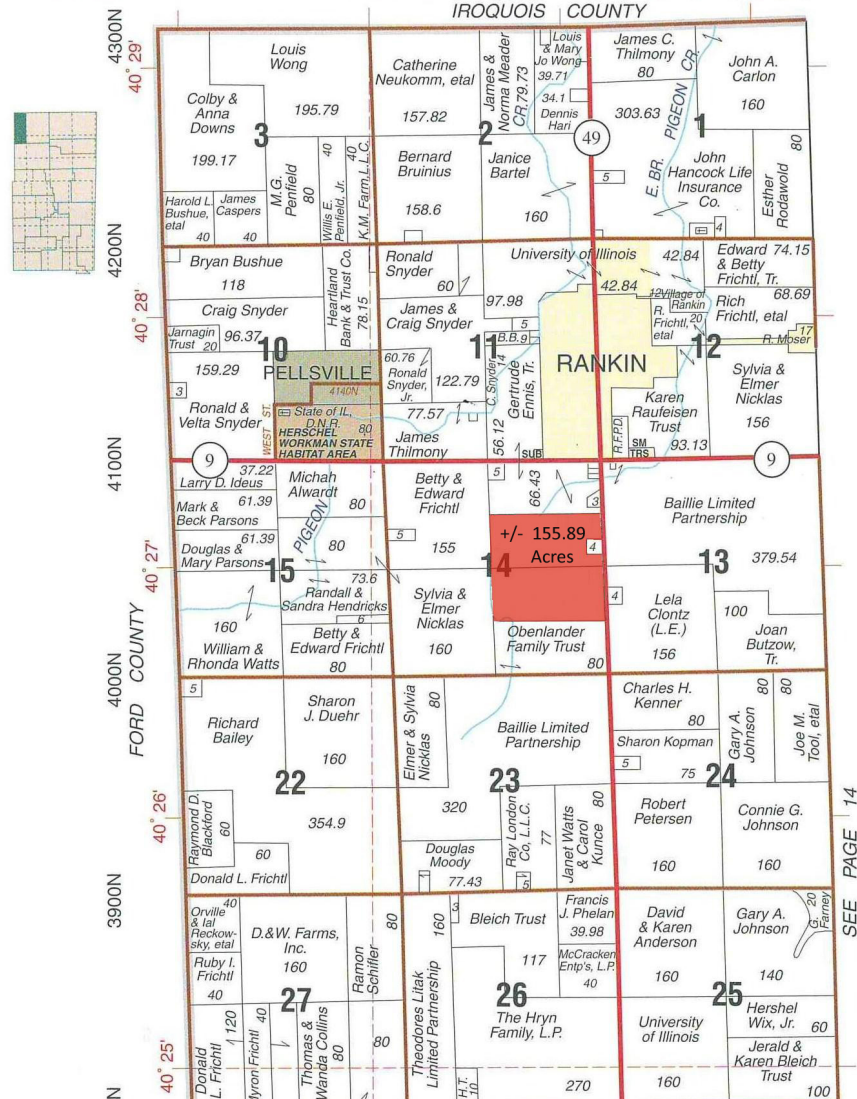


State: **Illinois**  
County: **Vermilion**  
Location: **14-23N-14W**  
Township: **Butler**  
Acres: **149.6**  
Date: **3/6/2014**

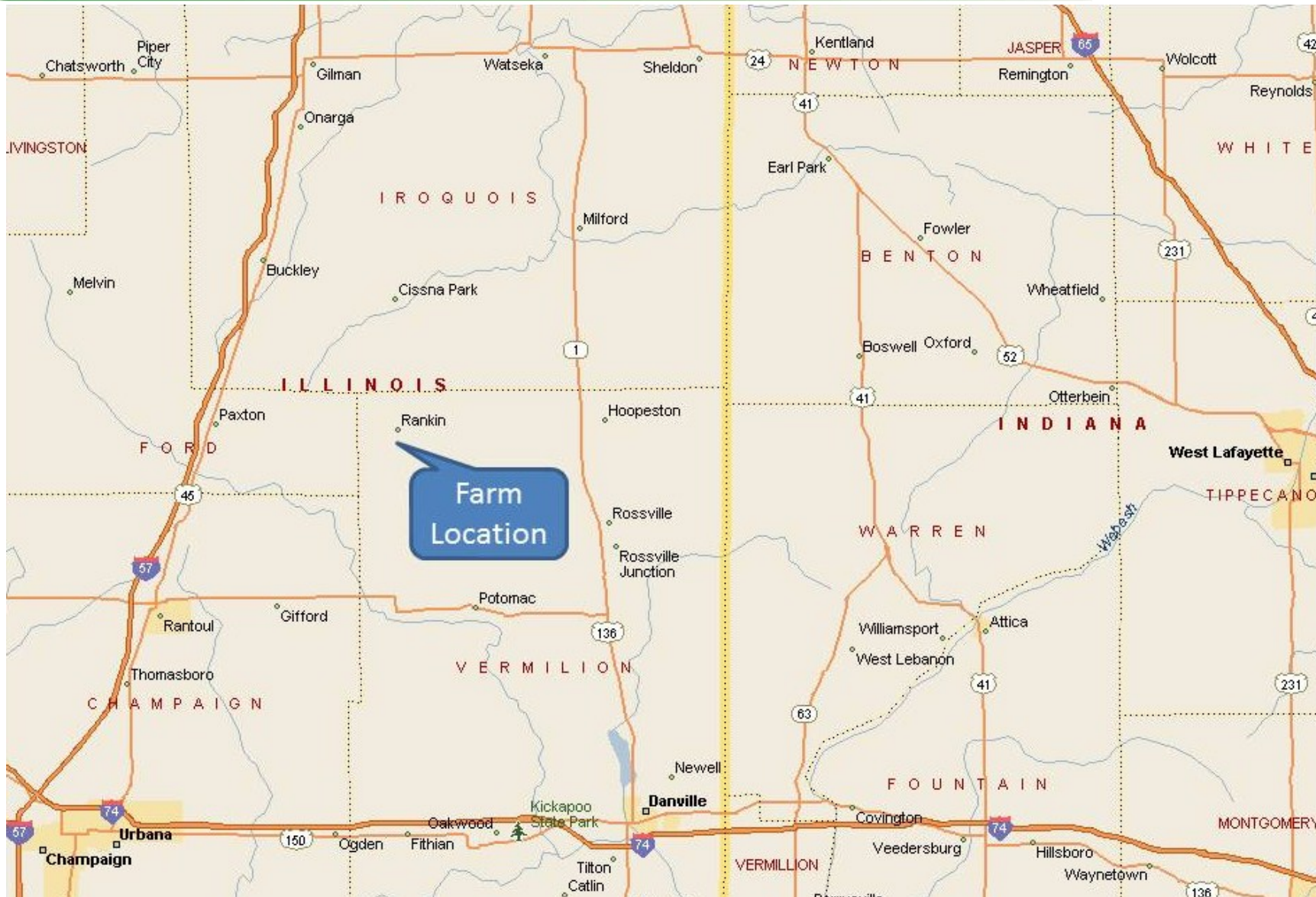


Code	Soil Description	Acres	Percent of field	II. State Productivity Index Legend	Corn Bu/A	Soybeans Bu/A	Crop productivity index for optimum management
230A	Rowe silty clay loam, 0 to 2 percent slopes	60.64	40.5%		148	49	111
**147B2	Clarence silty clay loam, 2 to 4 percent slopes, eroded	38.58	25.8%		**130	**46	**100
147A	Clarence silty clay loam, 0 to 2 percent slopes	35.56	23.8%		140	49	107
**241D3	Chatsworth silty clay, 6 to 12 percent slopes, severely eroded	13.19	8.8%		**75	**27	**57
**448B	Mona silt loam, 2 to 5 percent slopes	1.63	1.1%		**160	**50	**117
Weighted Average					135.2	46.3	102.5

WEST PART BUTLER T.22-23N.-R.14W.







Form : FSA-156EZ



United States Department of Agriculture  
Farm Service Agency

Program Year : 2014

Date : Mar 6, 2014

See Page 7 for non-discriminatory Statements.

### Abbreviated 156 Farm Record

State : ILLINOIS  
County : VERMILION

Farm Number : 11119  
Tract Number : 230

Description : B2 SEC 14 BUTLER WEST

FAV/WR History : No

BIA Unit Range Number :

HEL Status : NHEL: No agricultural commodity planted on undetermined fields

Wetland Status : Tract contains a wetland or farmed wetland

WL Violations :

#### Tract Land Data

Farm Land	Cropland	DCP Cropland	WBP	WRP	CRP	GRP	
158.95	149.40	149.40	0.00	0.00	11.60	0.00	
State Conservation	Other Conservation	Effective DCP Cropland	Double Cropped	MPL	FWP	EWP	DCP Ag. Related Activity
0.00	0.00	137.80	0.00	0.00	0.00	0.00	0.00

#### DCP Crop Data

Crop Name	Base Acres	CCC-505 CRP Reduction Acres	PTPP Reduction Acres	Direct Yield	Counter Cyclical Yield
Corn	83.50	0.00	0.00	112	112
Soybeans	19.60	19.90	0.00	36	36



## CRP Contract Information

<b>Contract Status:</b>	Approved	<b>Activity Type:</b>	No Activity
<b>Admin State:</b>	Illinois (17)	<b>Admin County:</b>	Vermilion (183)
<b>Physical State:</b>	Illinois (17)	<b>Physical County:</b>	Vermilion (183)
<b>Contract Number:</b>	2455A	<b>Signup Number:</b>	42
<b>Program Type:</b>	CRP	<b>Signup Name:</b>	Continuous SU42
<b>Program Year:</b>	2013	<b>Signup Type:</b>	Continuous
<b>Contract Description:</b>	N/A	<b>Subcategory Type:</b>	Regular

**Parent Contract:** Vermilion, IL 2455

<b>Approval Date:</b>	09/12/2013	<b>Original Contract Start Date:</b>	10/01/2012
<b>Effective Contract Start Date:</b>	10/01/2012	<b>Effective Contract End Date:</b>	09/30/2022
<b>Contract Acres:</b>	11.6	<b>Re-enrolled Acres:</b>	11.6
<b>Cropland Acres:</b>	11.6	<b>Marginal Pastureland Acres:</b>	0.0
<b>Rental Rate per Acre:</b>	\$225.22	<b>Annual Contract Payment:</b>	\$2,613
<b>HUC Code:</b>	071200020604	<b>Extended:</b>	No

### Farm/Tract and CLU Information

Farm Number	Tract Number	CLU	CLU Acres
11119	unknown	unknown	11.6