

13.32 Acres M/L Multifamily Development Land Bondurant, IA



Price: \$750,000

Description: Three parcels being sold as one. A total of 13.32 acres m/l with 7.2 acres of commercially zoned land and 6.12 acres of multifamily development land located in Meadow Brook North in Bondurant. Lot 3 is currently zoned R-3 (medium density residential with a maximum of 20 units/acre) while lot 1 and 2 retain C-1 commercial zoning. Lot 2 includes 370 ft of Highway frontage. Multifamily portion qualifies for USDA Guaranteed Rural Rental Housing Program. All infrastructure is stubbed into site. Property has flat topography, reducing development costs.

Zoning: C-1 / R-3

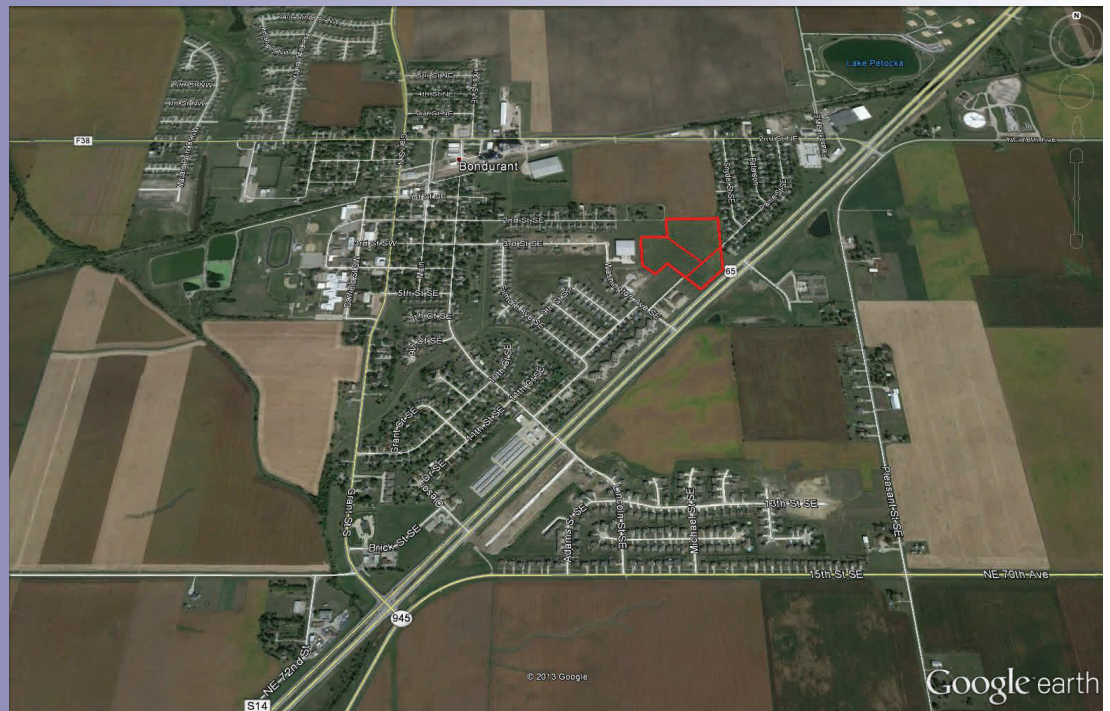
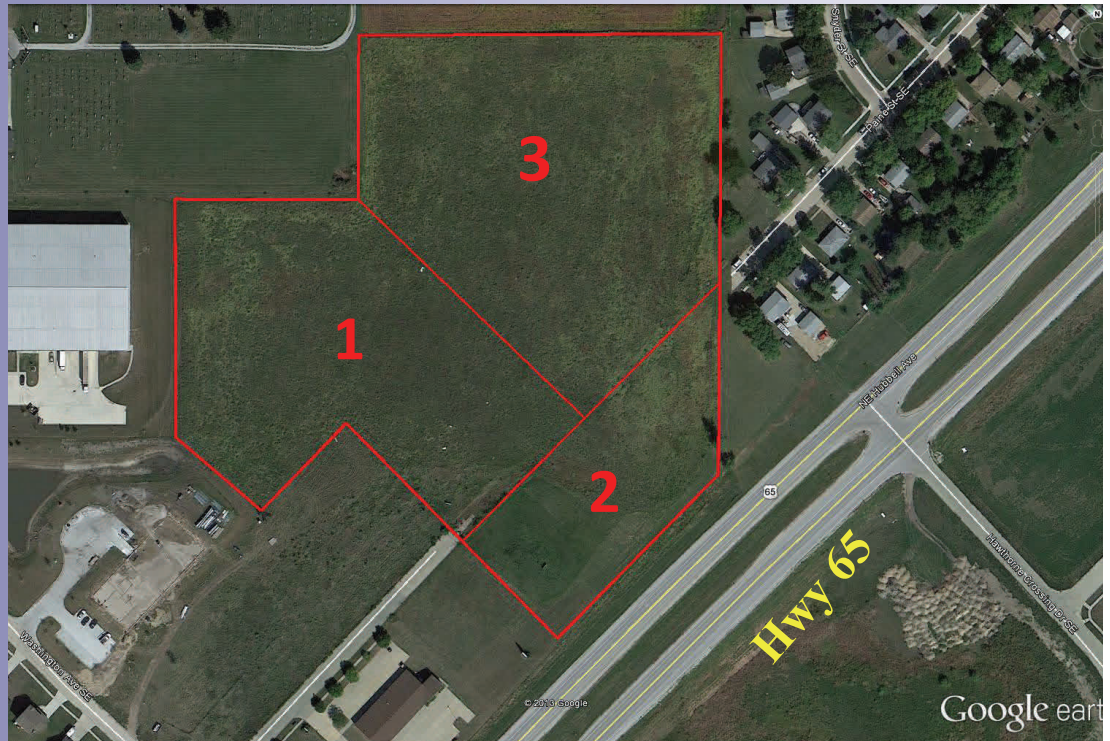
Directions: From intersection of Interstate 80 and Hwy 65, travel north/northeast on Hwy 65 into Bondurant. Turn west onto 2nd St NE. Turn south on Pain St SE. Property lies at the end of Paine St.

Steve Bruere

P: 515.222.1347

C: 515.240.7500

Steve@PeoplesCompany.com



Additional information can be found on our website: **Listing # 1543**

© 2012 Peoples Company We obtained the information above from sources we believe to be reliable. However, we have not verified its accuracy and make no guarantee, warranty or representation about it. It is submitted subject to the possibility of errors, omissions, change of price, rental or other conditions, prior sale, lease or financing, or withdrawal without notice. We include projections, opinions, assumptions or estimates for example only and they may not represent current or future performance of the property. You and your tax and legal advisors should conduct your own investigation of the property and transaction.