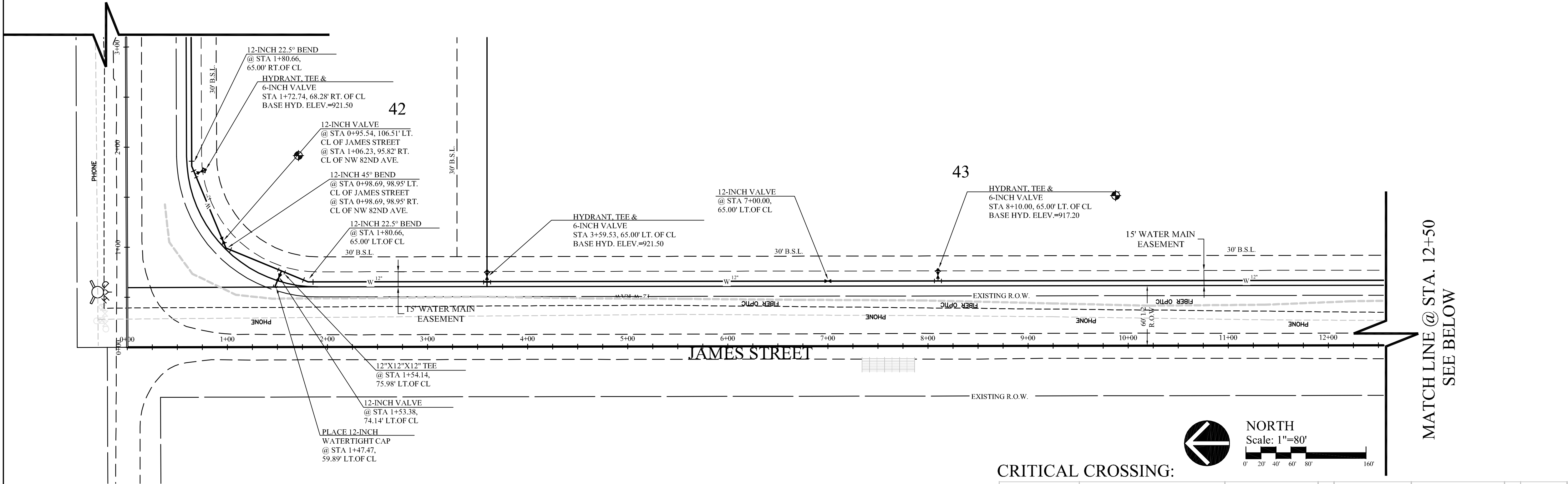


MATCH LINE @ STA. 3+00
SEE SHEET #5

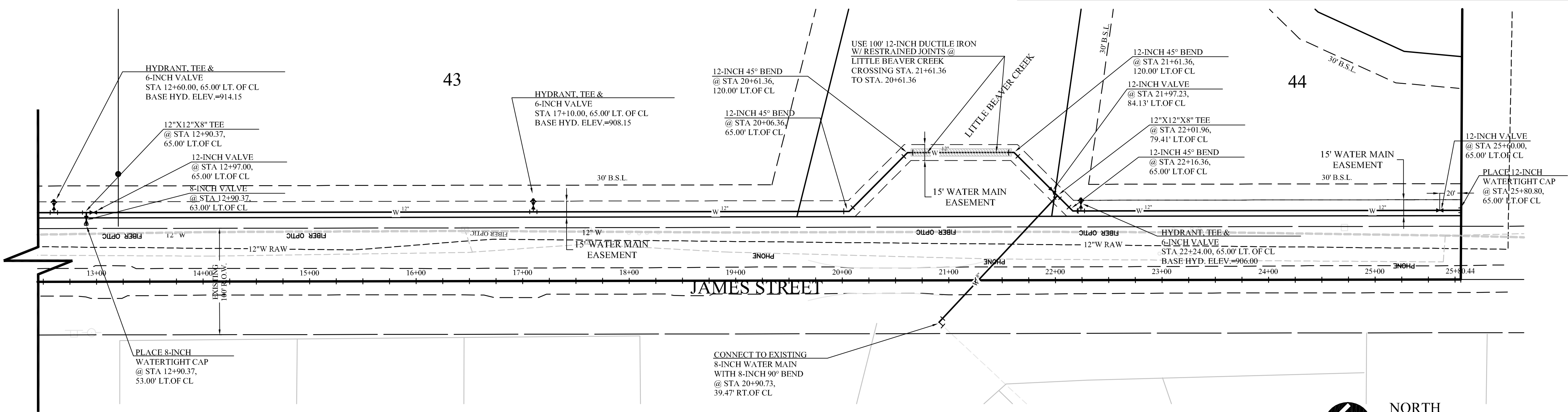


MATCH LINE @ STA. 12+50
SEE BELOW

CRITICAL CROSSING:

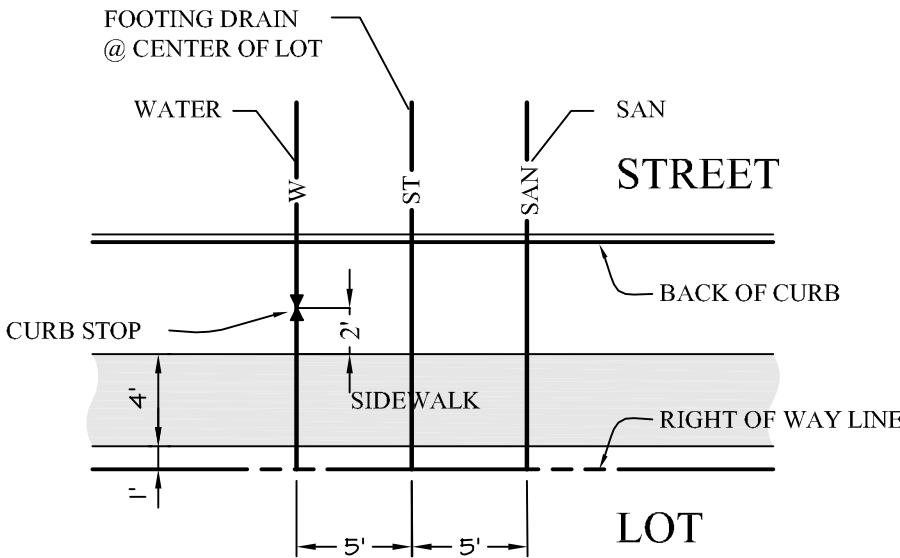
Critical Crossing	Station & Offset	Bottom of	ELEV	Top of	ELEV
#1	STA. 0+64.93, 17.63' LT OF CL	8" STORM	= 911.67	12" WATER	= 910.00
#2	STA. 3+13.96, 18.50' RT OF CL	8" WATER	= 915.80	8" SAN	= 904.09
#3	STA. 7+22.78, 3.45' RT OF CL	12" STORM	= 914.72	8" SAN	= 902.20
#4	STA. 10+27.44, 20.66' RT OF CL	30" STORM	= 908.51	8" WATER	= 907.00
#5	STA. 10+30.39, 2.83' LT OF CL	30" STORM	= 908.62	8" SAN	= 900.51
#6	STA. 11+11.61, 19.73' RT OF CL	8" WATER	= 909.80	8" SAN	= 897.28
#7	STA. 14+16.05, 20.84' RT OF CL	8" WATER	= 909.80	8" SAN	= 894.72
#8	STA. 22+12.73, 17.05' LT OF CL	8" STORM	= 905.53	8" SAN	= 898.97
#9	STA. 22+28.94, 15.31' LT OF CL	8" STORM	= 905.26	12" WATER	= 903.75
#10	STA. 22+29.59, 33.31' LT OF CL	12" WATER	= 903.00	8" SAN	= 899.10
#11	STA. 22+42.09, 145.25' LT OF CL	15" STORM	= 904.21	12" WATER	= 902.70

MATCH LINE @ STA. 12+50
SEE ABOVE



SERVICE DETAIL NOTES:

- ALL SERVICES SHOULD BE MARKED W/ STEEL POSTS (WATER-BLUE, STORM-WHITE, SANITARY-GREEN). POST SHALL BE A MINIMUM OF 4 FEET TALL.
- ALL SERVICE LOCATIONS ARE TO BE STAMPED INTO THE CURB WITH LETTER IRONS.
- SHOW THE LOCATION OF THE CURB STOPS. THE CURB STOP MUST BE LIE 2-FEET OFF THE SIDEWALK BETWEEN THE SIDEWALK AND THE STREET.



SERVICE DETAIL

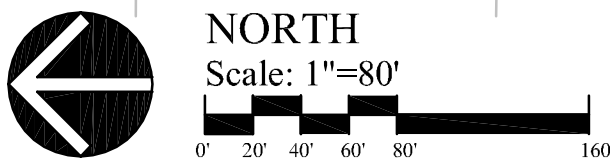
NO SCALE

QUANTITIES

2768	L.F. 8-INCH WATER MAIN
3197	L.F. 12-INCH WATER MAIN
100	L.F. 12-INCH DUCTILE IRON WATER MAIN
7	EA. HYDRANT ASSEMBLY OFF 12" MAIN
7	EA. HYDRANT ASSEMBLY OFF 8" MAIN
6	EA. 8-INCH VALVE
4	EA. 8-INCH 11.25° BEND
9	EA. 8-INCH 22.5° BEND
1	EA. 8-INCH 90° BEND
8	EA. 12-INCH VALVE
2	EA. 12-INCH 22.5° BEND
5	EA. 12-INCH 45° BEND
1	EA. 12"x12"x8"x8" CROSS
1	EA. 8"x8"x8" TEE
2	EA. 12"x12"x8" TEE
1	EA. 12"x12"x12" TEE
2	EA. 8-INCH WATERTIGHT CAP
3	EA. 12-INCH WATERTIGHT CAP
41	EA. WATER SERVICES

LEGEND

EXISTING	PROPOSED	
---	---	PLAT BOUNDARY
---	---	STORM SEWER & SIZE
---	---	SANITARY SEWER & SIZE
---	---	WATER MAIN & SIZE
---	---	MANHOLE
---	---	STORM INTAKE
---	---	FIRE HYDRANT
---	---	VALVE



BENCHMARK

B.M. - STUBBY NAIL AT THE SW CORNER OF THE SW 1/4 SW 1/4 OF SEC. 29-80-25. LOCATED IN JAMES STREET BY THE ENTRANCE TO THE WASTE WATER TREATMENT FACILITY.

ELEVATION-----912.94

CHISELED CROSS IN SOUTHEAST RETAINING WALL OF NW 128TH STREET(JAMES STREET) BRIDGE OVER TRIBUTARY TO BEAVER CREEK

ELEVATION-----912.70 (NGVD FROM FEMMA MAP PANEL 80)



DATE: 4-4-2006
REVISIONS:

SHEET
4
OF 11