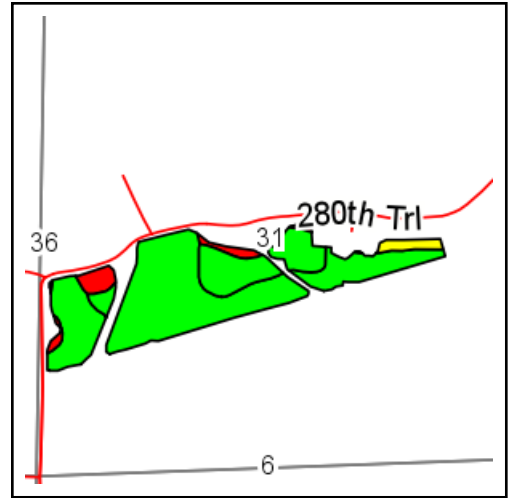
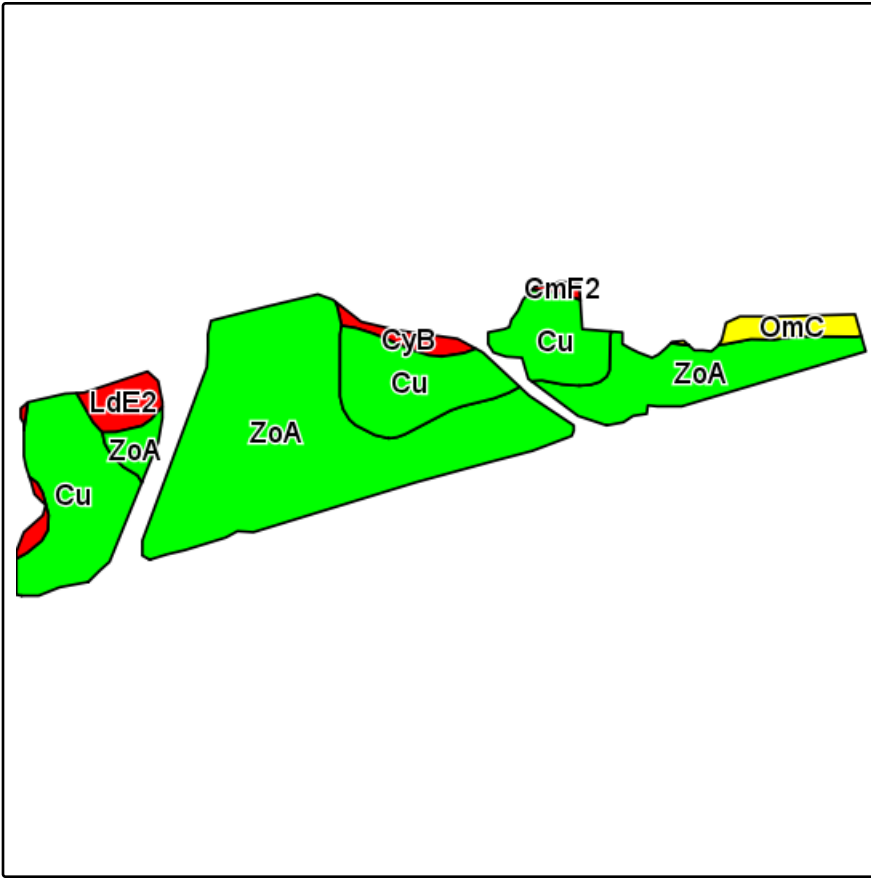


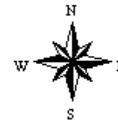
Soils Map-CSR(as of 1/21/12)



State: **Iowa**
 County: **Madison**
 Location: **31-75N-26W**
 Township: **South**
 Acres: **32.94**
 Date: **10/10/2013**



Maps provided by:



©AgriData, Inc 2013
 www.AgriDataInc.com

Field borders provided by Farm Service Agency as of 5/21/2008.
 Soils data provided by USDA and NRCS.

Code	Soil Description	Acres	Percent of field	CSR Legend	Non-Irr Class	CSR*	Corn	Soybeans
ZoA	Zook silty clay loam, 0 to 2 percent slopes	19.36	58.8%		IIw	70	174	47
Cu	Colo silty clay loam	10.65	32.3%		IIw	70	174	47
LdE2	Lindley loam, 14 to 18 percent slopes, moderately eroded	1.30	3.9%		VIe	28	117	32
OmC	Olmitz loam, 5 to 9 percent slopes	0.91	2.8%		IIIe	57	156	42
CyB	Colo-Ely silty clay loams, gullied, 2 to 5 percent slopes	0.58	1.8%		Vw	10	93	25
CmF2	Clanton-Gosport silt loams, 18 to 25 percent slopes, moderately eroded	0.14	0.4%		VIIe	5	86	23
Weighted Average						66.7	169.5	45.8

**IA is currently updating the CSR values for each county to CSR2. Note: ALL soils information on this page is dated 1/21/2012

*CSR ratings will be available for a limited time to aid in the transition to CSR2.