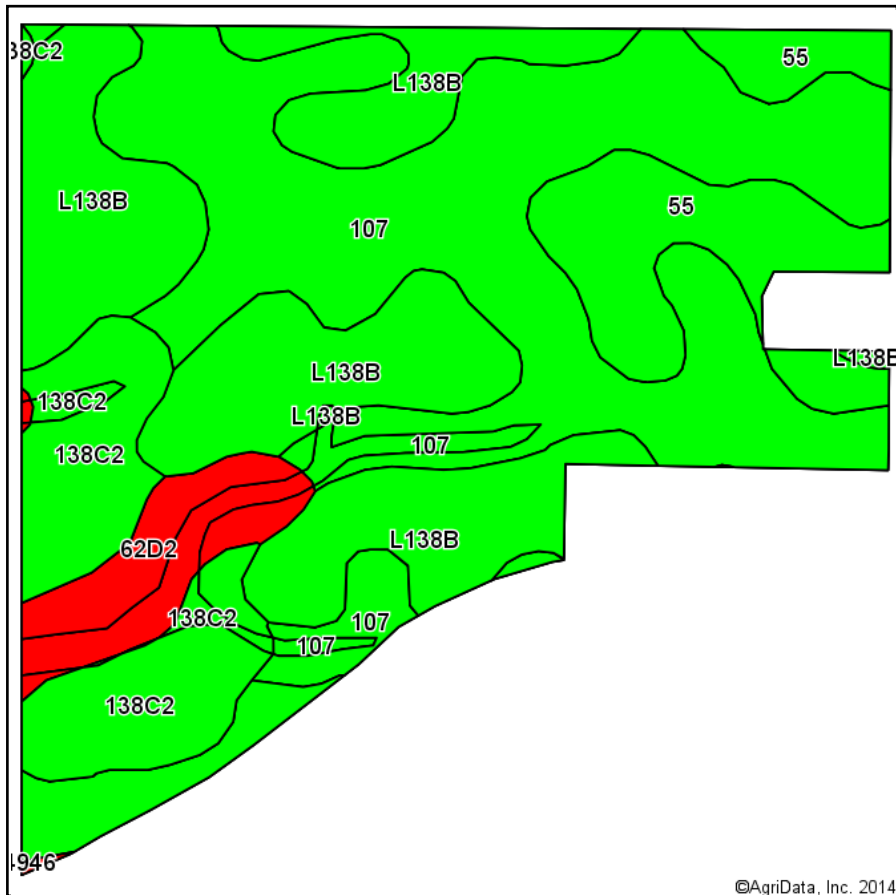
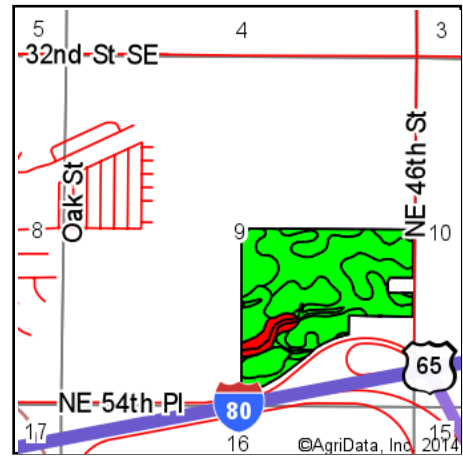


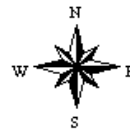
Soils Map-CSR2



Soils data provided by USDA and NRCS.



State: **Iowa**
 County: **Polk**
 Location: **9-79N-23W**
 Township: **Delaware**
 Acres: **104.36**
 Date: **2/17/2014**



Code	Soil Description	Acres	Percent of field	**CSR2 Legend	Non-Irr Class	CSR2**
107	Webster silty clay loam, 0 to 2 percent slopes	41.08	39.4%		IIw	90
L138B	Clarion loam, Bemis moraine, 2 to 6 percent slopes	33.08	31.7%		IIe	88
138C2	Clarion loam, 5 to 9 percent slopes, moderately eroded	12.70	12.2%		IIIe	82
55	Nicollet loam, 1 to 3 percent slopes	11.46	11.0%		I	90
62D2	Storden loam, 9 to 14 percent slopes, moderately eroded	5.96	5.7%		IIIe	36
4946	Orthents-urban land complex, 0 to 5 percent slopes	0.08	0.1%			5
Weighted Average						85.2

**IA has updated the CSR values for each county to CSR2.

Area Symbol: IA153, Soil Area Version: 15, Established: 11/27/2013 03:51:22 PM

Field borders provided by Farm Service Agency as of 5/21/2008. Aerial photography provided by Aerial Photography Field Office.