

6.4 Acres M/L Warren County, IA



Description: 6.4 acres m/l located south of Martensdale on Hwy R45 pavement that could be combined. Great building site(s) covered with mature timber and very secluded. Rural water, natural gas, and electric are available along Hwy R45, and driveway and culvert have already been installed. Located in the highly sought-after Martensdale-St. Mary's school district. Come build your dream home in the serenity of the country while taking advantage of city amenities only a short distance away. Located minutes from Martensdale and Interstate 35, and just a short commute to the Des Moines Metro.

School: Martensdale-St. Mary's

Zoning: Agriculture

Directions: From West Des Moines, travel south on I-35 to exit 56. Travel east on Hwy 92 approximately 2.5 miles and turn south onto Hwy R45. Continue south on Hwy R45 to Lowe St. and turn east. Property is located on the southeast corner of Hwy R45 & Lowe St.

Price: \$75,000

Matt Adams

P: 515.222.1347

C: 515.423.9235

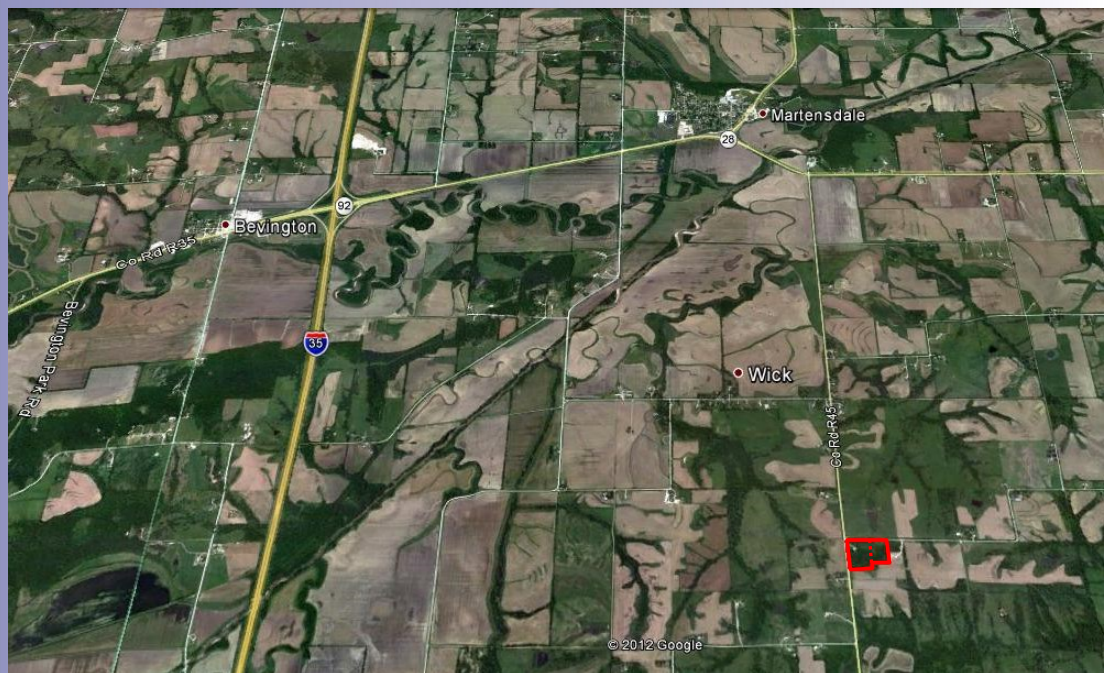
Matt@PeoplesCompany.com

Steve Bruere

P: 515.222.1347

C: 515.240.7500

Steve@PeoplesCompany.com



Additional information can be found on our website: **Listing 11158**

© 2013 Peoples Company We obtained the information above from sources we believe to be reliable. However, we have not verified its accuracy and make no guarantee, warranty or representation about it. It is submitted subject to the possibility of errors, omissions, change of price, rental or other conditions, prior sale, lease or financing, or withdrawal without notice. We include projections, opinions, assumptions or estimates for example only and they may not represent current or future performance of the property. You and your tax and legal advisors should conduct your own investigation of the property and transaction.