

38.5 Acres M/L Development Land Norwalk, Iowa



Price: \$30,000 / Acre

Description: 38.5 acres m/l of prime development land located just south of Norwalk, Iowa. Property adjoins Norwalk Industrial Park and borders the incorporated city limits of Norwalk. Outstanding opportunity for a data center near the Des Moines Metro. Adjacent to Mid-American transfer station. Tax Increment Financing incentives available for qualified users. Conveniently located minutes from I-35, the Des Moines Airport, Hwy 5/65 bypass, and just a short commute to anywhere in the Des Moines Metro.

Taxes: \$3,102 annually

Zoning: Agriculture

Legal Description: SE 1/4 of the NW 1/4 and the SE 1 Acre of the N 1/2 of the NW 1/4 of Section 24, Township 77N, Range 25W of Warren County, Iowa.

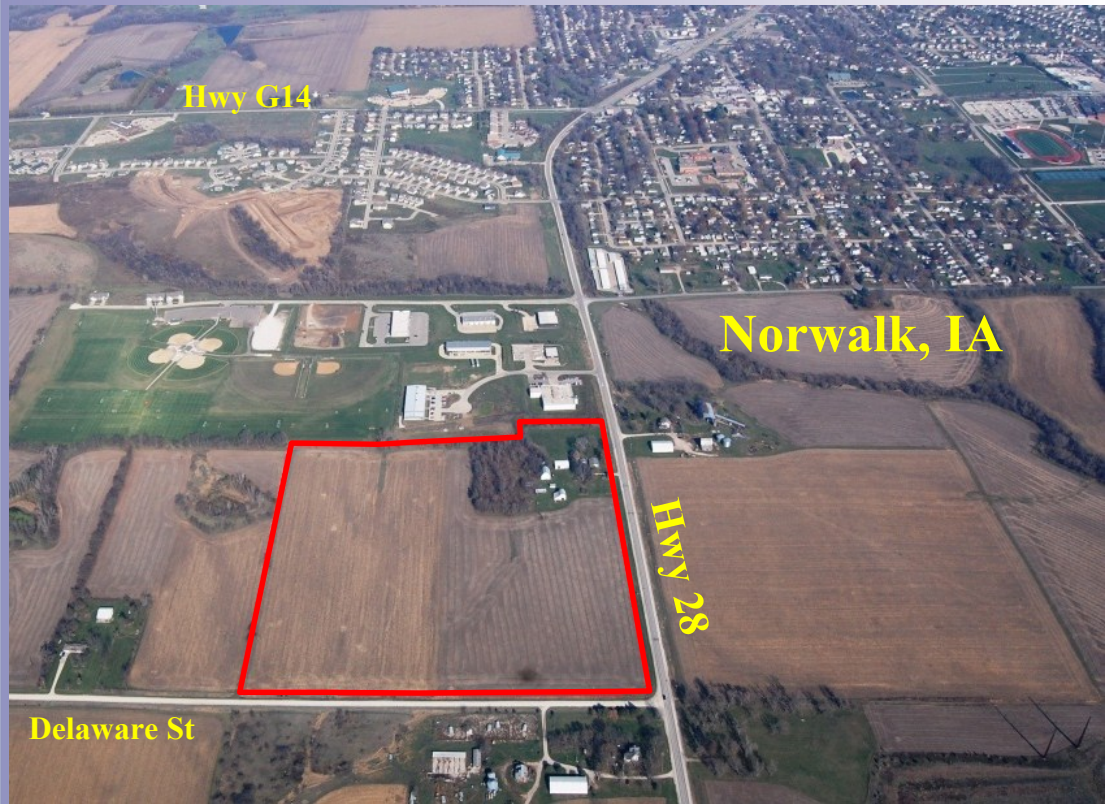
Directions: From Norwalk, travel south on Sunset Dr. / Hwy 28. Property sits west of Hwy 28.

Steve Bruere
REALTOR®

P: 515.222.1347

C: 515.240.7500

Steve@PeoplesCompany.com



Additional information can be found on our website: **Listing # 1248**

© 2011 Peoples Company We obtained the information above from sources we believe to be reliable. However, we have not verified its accuracy and make no guarantee, warranty or representation about it. It is submitted subject to the possibility of errors, omissions, change of price, rental or other conditions, prior sale, lease or financing, or withdrawal without notice. We include projections, opinions, assumptions or estimates for example only and they may not represent current or future performance of the property. You and your tax and legal advisors should conduct your own investigation of the property and transaction.