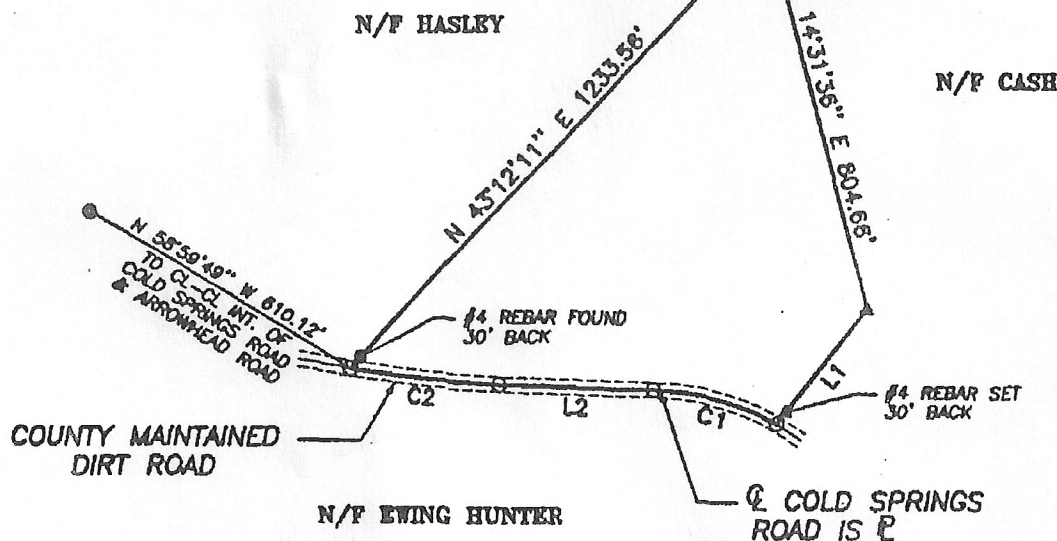


GEORGIA, GREENE COUNTY  
CLERK OF SUPERIOR COURT

FILED & RECORDED 8-17-01  
TIME 1:09 p.m.  
CABINET  
SLIDE 483 - PAGE 9  
Sharon Wilkes  
(DEPUTY) CLERK



LINE	DIRECTION	DISTANCE
L1	S 38°50'21" W	295.84'
L2	N 88°17'25" W	312.22'

LEGEND
● - #4 REBAR FOUND
▲ - #4 REBAR SET
○ - COMPUTED POINT

CURVE	DIRECTION	RAD	ARC	CHORD
C1	N 74°38'54" W	502.13	257.88	255.06
C2	N 83°42'51" W	2496.09	304.76	304.57

PLAT REFERENCES
■ PLAT BY JOHN A. MCGILL, SR. FOR NORVELL D. & JOANI HASLEY, DATED MARCH 20, 2001.
■ PLAT BY JAMES R. SMITH FOR MARK 1 TIMBER INC., DATED OCTOBER 5, 2000.



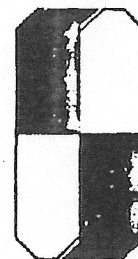
**\*\* GENERAL NOTES \*\***

1. THIS PLAT IS SUBJECT TO ALL EASEMENTS, RIGHTS-OF-WAY, AND PROTECTIVE COVENANTS OF RECORD.

**PLAT FOR:**

**JERRY ROBERTS**

11.83 ACRES, 146th G.M.D.  
GREENE COUNTY, GEORGIA

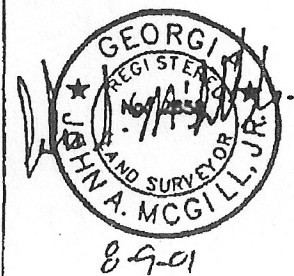


**JOHN A. MCGILL, P.C.**  
Land Surveying • Land Planning

The Oconee Company, Est. 1897  
1801 South Main Street  
Doraville, Ga. 30042  
Phone: (708) 453-1013  
Fax: (708) 606-1914

McGill And Associates, Est. 1972  
834 Shields Pond Road  
Thomson, Ga. 30084  
Phone: (708) 606-6812  
Fax: (708) 606-0871

THE FIELD DATA UPON WHICH THIS PLAT IS BASED HAS A CLOSURE PRECISION OF ONE FOOT IN 91,899 FEET AND AN ANGULAR ERROR OF 1" PER ANGLE POINT, AND WAS ADJUSTED USING THE COMPASS RULE. ANGLES TURNED BY A TOPCON GTS 3B AND DISTANCES MEASURED WITH A TOPCON GTS 3B.



SURVEY DATE	AUGUST 8, 2001
DATE DRAWN	AUGUST 10, 2001
MAP CLOSURE	1/5,339,322
SCALE	1"=300'
DRAWN BY	J.T.A.
JOB NO.	G1355
FILE PATH	D:\EPDATA\C1\G1355\G1355.DWG