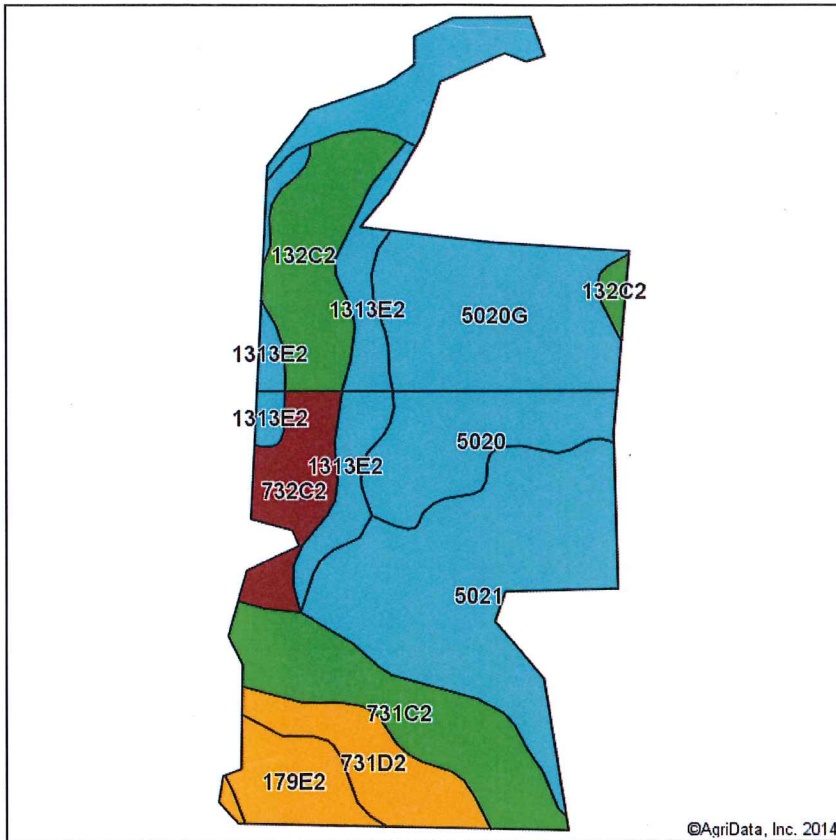
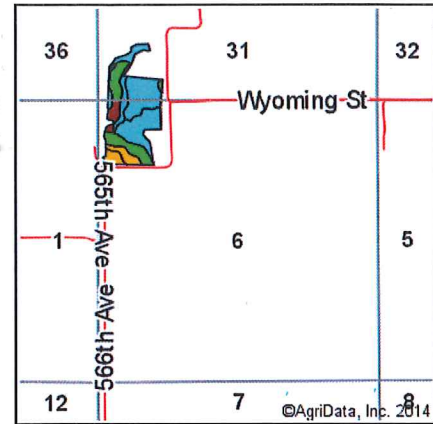


Soils Map-CSR2



Soils data provided by USDA and NRCS.

©AgriData, Inc. 2014



State: Iowa
County: Marion
Location: 31-74N-18W
Township: Liberty
Acres: 37.94
Date: 3/11/2014



Maps Provided By:
surety
CUSTOMIZED ONLINE MAPPING
© AgriData, Inc. 2014 www.AgriDataInc.com

Code	Soil Description	Acres	Percent of field	**CSR2 Legend	Non-Irr Class	CSR2**
5021	Orthents, hilly	8.71	23.0%			5
5020G	Strip mine spoils, 25 to 80 percent slopes	8.03	21.2%			0
731C2	Pershing silty clay loam, 5 to 9 percent slopes, moderately eroded	4.35	11.5%		IIIe	60
132C2	Weller silt loam, 5 to 9 percent slopes, moderately eroded	3.72	9.8%		IIIe	62
5020	Pits and Dumps	3.48	9.2%			0
731D2	Pershing silty clay loam, 9 to 14 percent slopes, moderately eroded	2.44	6.4%		IVe	35
732C2	Weller silty clay loam, 5 to 9 percent slopes, moderately eroded	2.11	5.6%		IIIe	56
179E2	Gara loam, 14 to 18 percent slopes, moderately eroded	1.78	4.7%		VIe	35
1313E2	Munterville silt loam, 14 to 18 percent slopes, moderately eroded	1.78	4.7%		VIIe	22
1313E2	Munterville silt loam, 14 to 18 percent slopes, moderately eroded	1.54	4.1%		VIIe	22
Weighted Average						23

**IA has updated the CSR values for each county to CSR2.

Field borders provided by Farm Service Agency as of 5/21/2008. Aerial photography provided by Aerial Photography Field Office.