



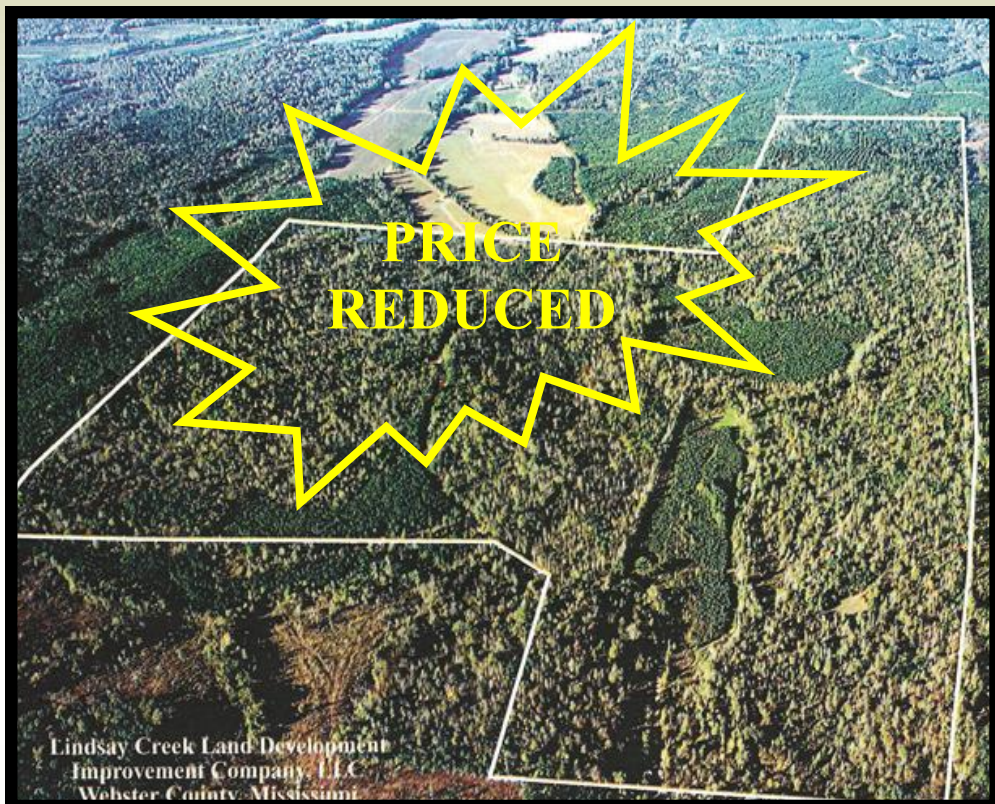
Lindsay Creek

341 Acres +/-
Webster County, MS



CONTACT:
J. PARKER SARTAIN
601.506.2398
psartain@sartainsheritage.com

Sartain's Heritage Properties
106 First Choice Drive
Madison, MS 39110
Phone: 601-856-2720
Fax: 601-853-6765
www.SartainsHeritage.com



MSU Bulldogs Fan / Sportsman

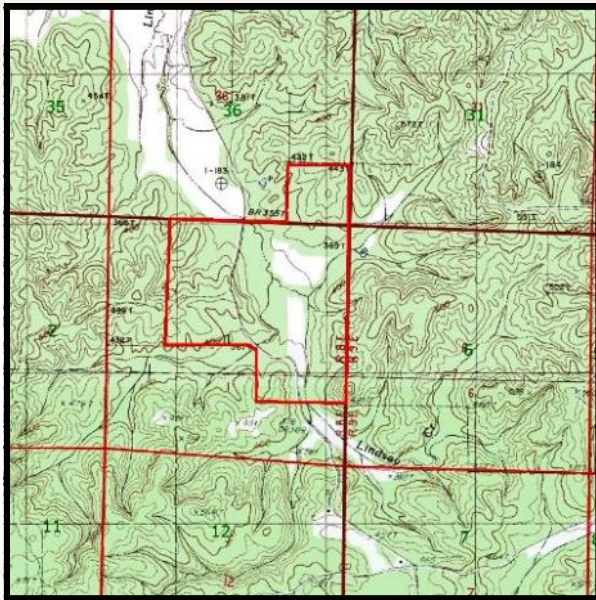
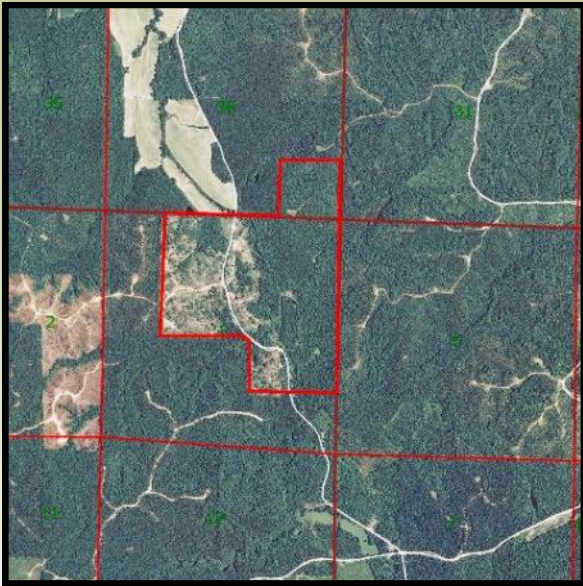
341 acres of rolling hills and frontage on both sides of Lindsay Creek in Webster County, MS.

The property consists of approximately 80 acres of 15 year pine plantation, 140 acres of pines replanted in December 2012, with the balance in hardwood bottoms along Lindsay Creek.

There are 7 established food plots and shooting houses with mast producing white oaks and chestnuts in the creek bottoms producing excellent whitetail and turkey hunting opportunities.

Lindsay Creek is conveniently located approximately 27 miles northwest of Europa and 37 miles from **Starkville/MSU**, making it the perfect hunting retreat for a sportsman/MSU fan to get in a morning hunt with plenty of time to make SEC athletic events available on campus.

\$1450.00 per ac.



All information contained herein is supplied by sources deemed reliable, but is not guaranteed by Sartain's Heritage Properties, its Brokers or Agents. Properties are subject to errors, omissions, correction, price change, prior sale or withdrawal without notice.