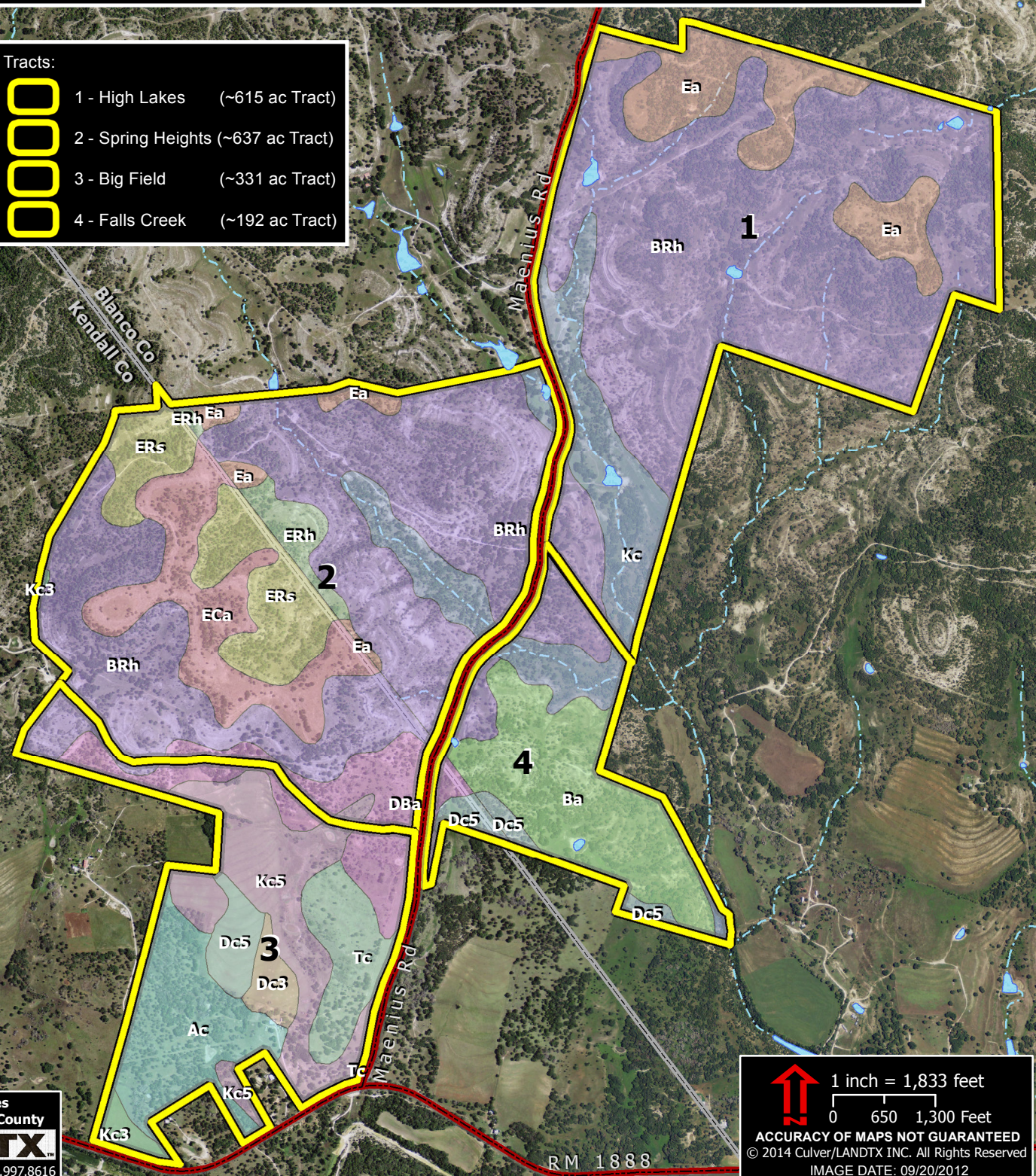


Soils of Williamson Blanco Ranch

	Ac - Anhalt clay, 1-3% slopes		ERh - Eckrant-Rock outcrop association, hilly
	BRh - Brackett-Real association, hilly		ERs - Eckrant-Rock outcrop association, steep
	Ba - Brackett association, undulating		Ea - Eckrant association, undulating
	DBa - Doss-Brackett association, undulating		Kc - Krum clay, 3-5% slopes
	Dc3 - Denton silty clay, 1-3% slopes		Kc3 - Krum silty clay, 1-3% slopes
	Dc5 - Doss silty clay, 1-5% slopes		Kc5 - Krum silty clay, 3-5% slopes
	ECa - Eckrant-Comfort association, gently undulating		Tc - Tarpley clay, 1-3% slopes

Tracts:

	1 - High Lakes (~615 ac Tract)
	2 - Spring Heights (~637 ac Tract)
	3 - Big Field (~331 ac Tract)
	4 - Falls Creek (~192 ac Tract)



~1775 acres

Blanco/Kendall County

LANDTX

www.landtx.com 830.997.8616



1 inch = 1,833 feet

0 650 1,300 Feet

ACCURACY OF MAPS NOT GUARANTEED

© 2014 Culver/LANDTX INC. All Rights Reserved

IMAGE DATE: 09/20/2012

RM 1888