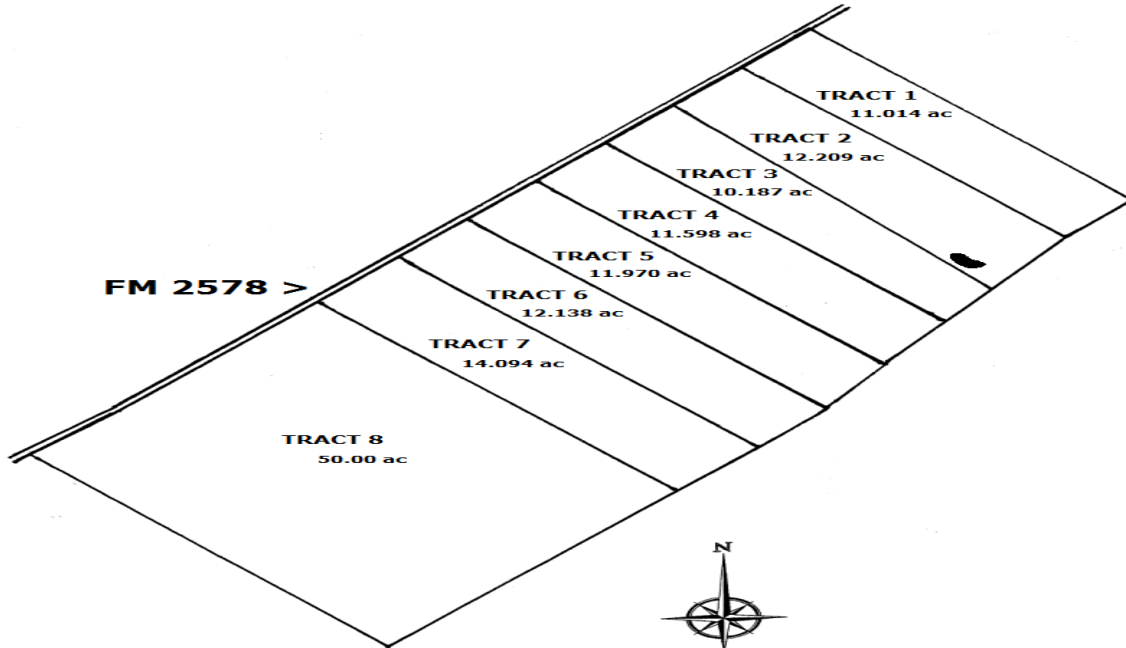


# Heritage Select Investments, LLC

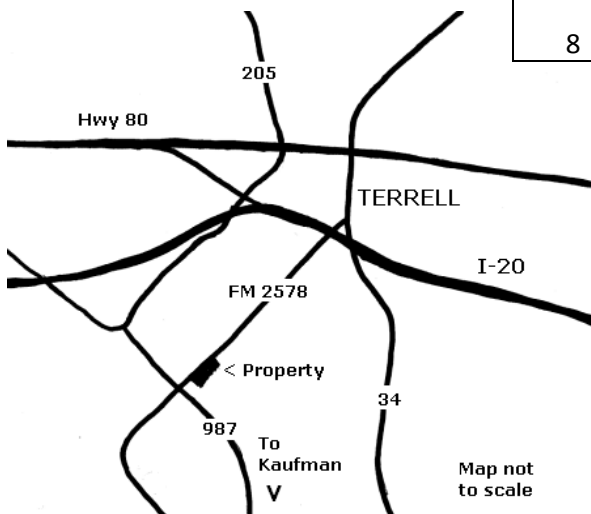
## Secure Covenant Interests, LTD



### Terrell, TX in Kaufman County



TRACTS	ACREAGE	CASH PRICE	TERM PRICE
1	11.014	Sold	
2	12.209	Sold	
3	10.187	Sold	
4	11.598	Sold	
5	11.970	Sold	
6	12.138	Sold	
7	14.094	Sold	
8	50.000	\$ 247,500.00 (4950/ac)	\$ 284,500.00 (5690/ac)



#### Directions:

From Terrell travel south on Hwy 34. Turn right (west) onto FM 2578 to I-20. Continue traveling across the overpass for 4.2 miles on FM 2578. The property is located on the left (south) side of FM 2578.

### WE OWNER FINANCE

(936) 661-9247

cody@landsoftex.com

www.landsoftex.com

Prices and availability subject to change

Plat and map not drawn to scale