

# Heritage Select Investments, LLC

## Secure Covenant Interests, LTD



### Jasper, TX (Huff Creek) in Jasper County

<u>Tracts</u>	<u>Acreage</u>	<u>Cash Price</u>	<u>Owner Finance Price</u>
---------------	----------------	-------------------	----------------------------

#### HUFF CREEK ESTATES

Tract 1	9.080 ac	\$28,012 (3085/ac)	\$29,828 (3285/ac)
---------	----------	--------------------	--------------------

Tract 2	6.908 ac	SOLD	
---------	----------	------	--

Tract 3	6.908 ac	SOLD	
---------	----------	------	--

Tract 4	8.895 ac	SOLD	
---------	----------	------	--

Tract 5	1.070 ac	SOLD	
---------	----------	------	--

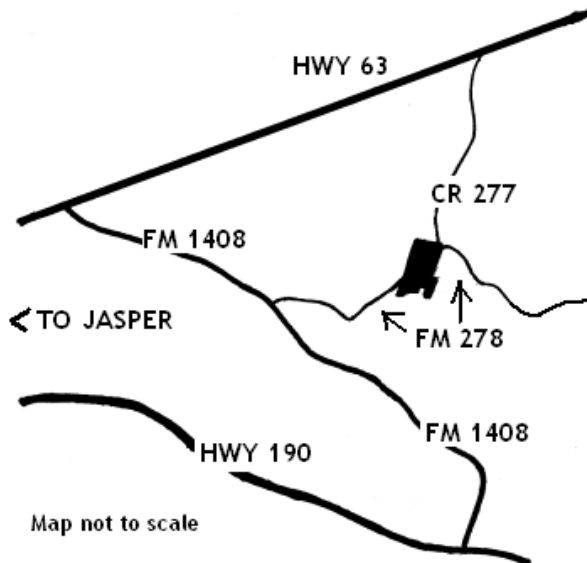
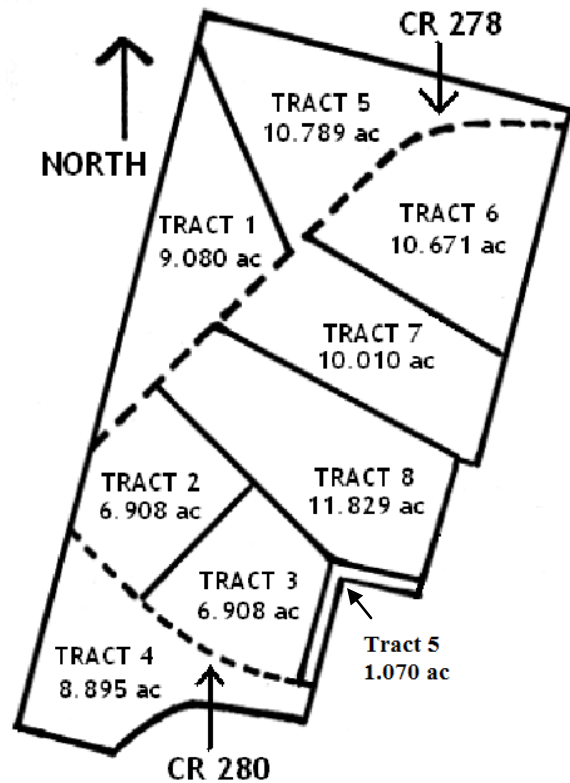
#### NON-SUBDIVISION TRACTS

Tract 5	10.789 ac	SOLD	
---------	-----------	------	--

Tract 6	10.671 ac	SOLD	
---------	-----------	------	--

Tract 7	10.010 ac	SOLD	
---------	-----------	------	--

Tract 8	11.829 ac	SOLD	
---------	-----------	------	--



#### Directions:

From US Hwy 190 at Jasper, Texas, travel NE on State Hwy 63 for 3.01 miles. Turn south (right) onto FM 1408 and travel 2 miles. Turn east (left) onto CR 278 and travel 1.5 miles. Properties are located on both sides of CR 278.

### WE OWNER FINANCE

(936) 661-9247    cody@landsoftex.com    www.landsoftex.com

Prices and availability subject to change

Plat and map not drawn to scale