



855 S. Pear Orchard Rd., Suite 401 · Ridgeland, MS 39157 · 601.952.2828

442 ACRES IN LINCOLN COUNTY, MS

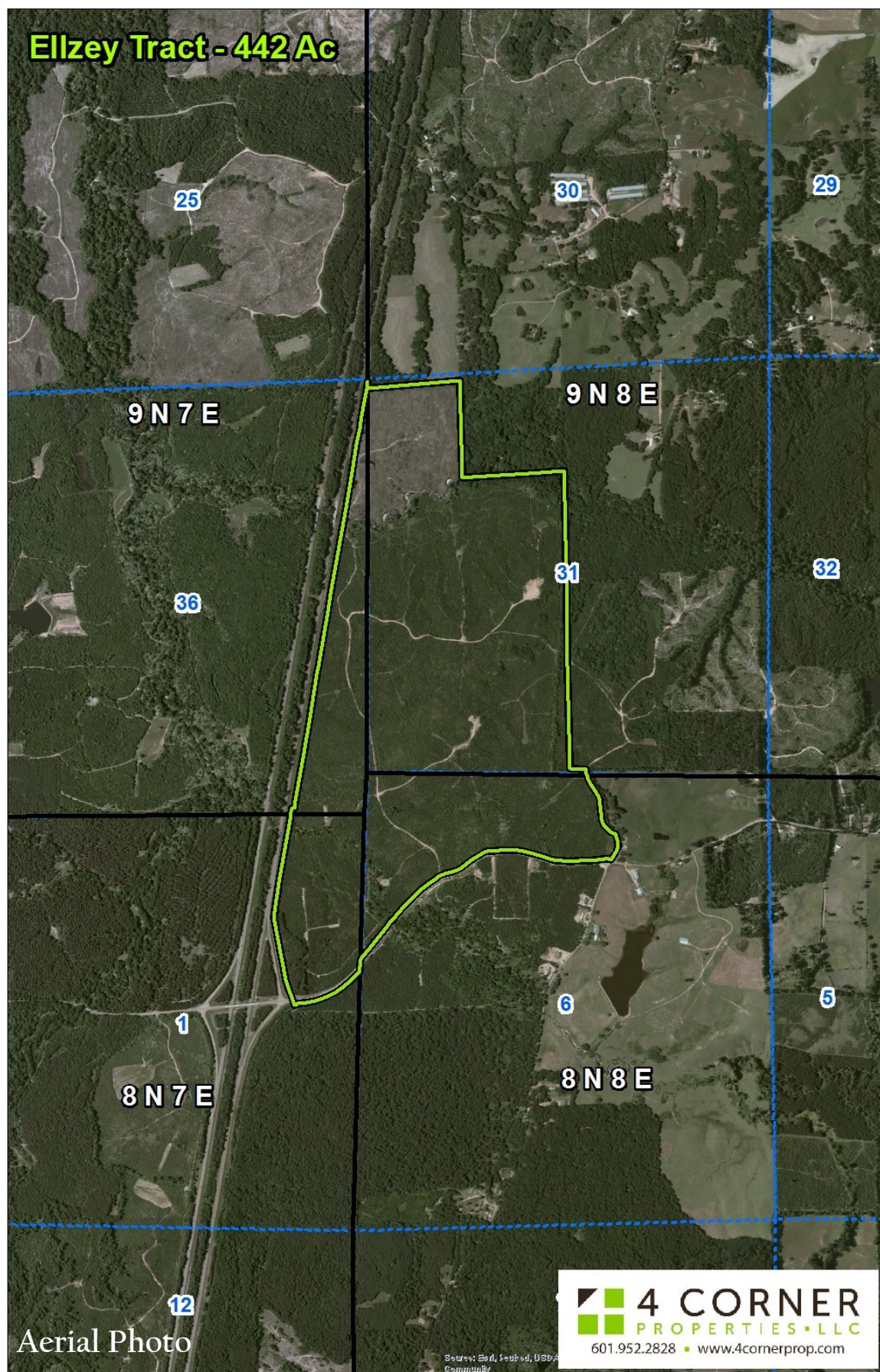


This 442 acre tract is located at the Mt. Zion exit #48 on I-55 N. It has over 5,000' of road frontage running from I-55 along Mt. Zion Rd. to New Sight Rd. and fronts I-55 for 1.5 miles. This is an incredible site for a commercial and residential development located just minutes from Wesson/Brookhaven with easy access to New Orleans or Memphis markets. Please note that this tract is located in Copiah (North side) and Lincoln County (South side). The Copiah side is located in the Wesson school and the Lincoln side is in the LSSD. It is stocked with pine plantation of various ages and has a live creek running through the northern end of the property.

\$1,400,000

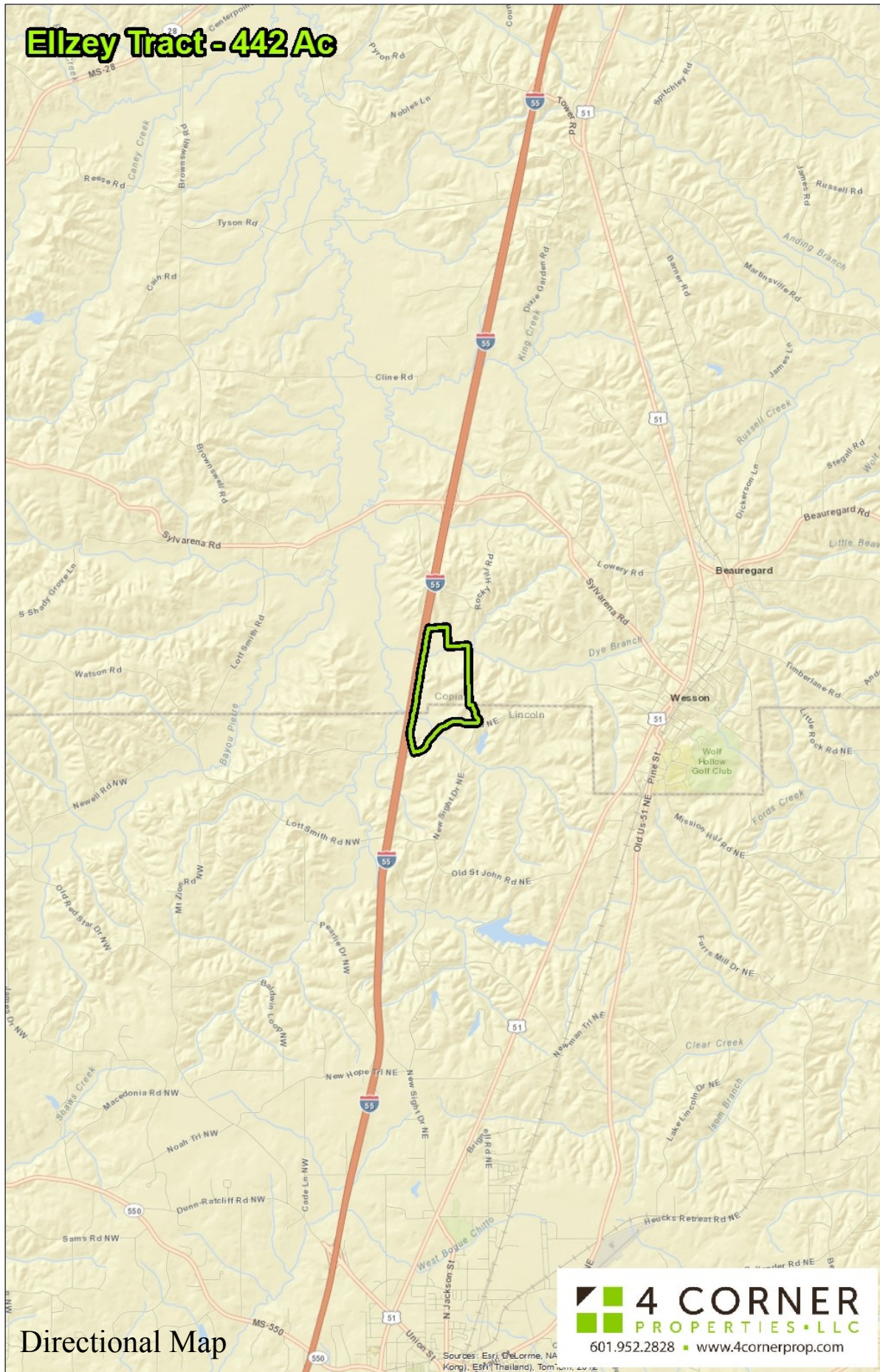
Clint Stewart, REALTOR® · cbstewart@4cornerprop.com · 601.757.8787 cell

Ellzey Tract - 442 Ac

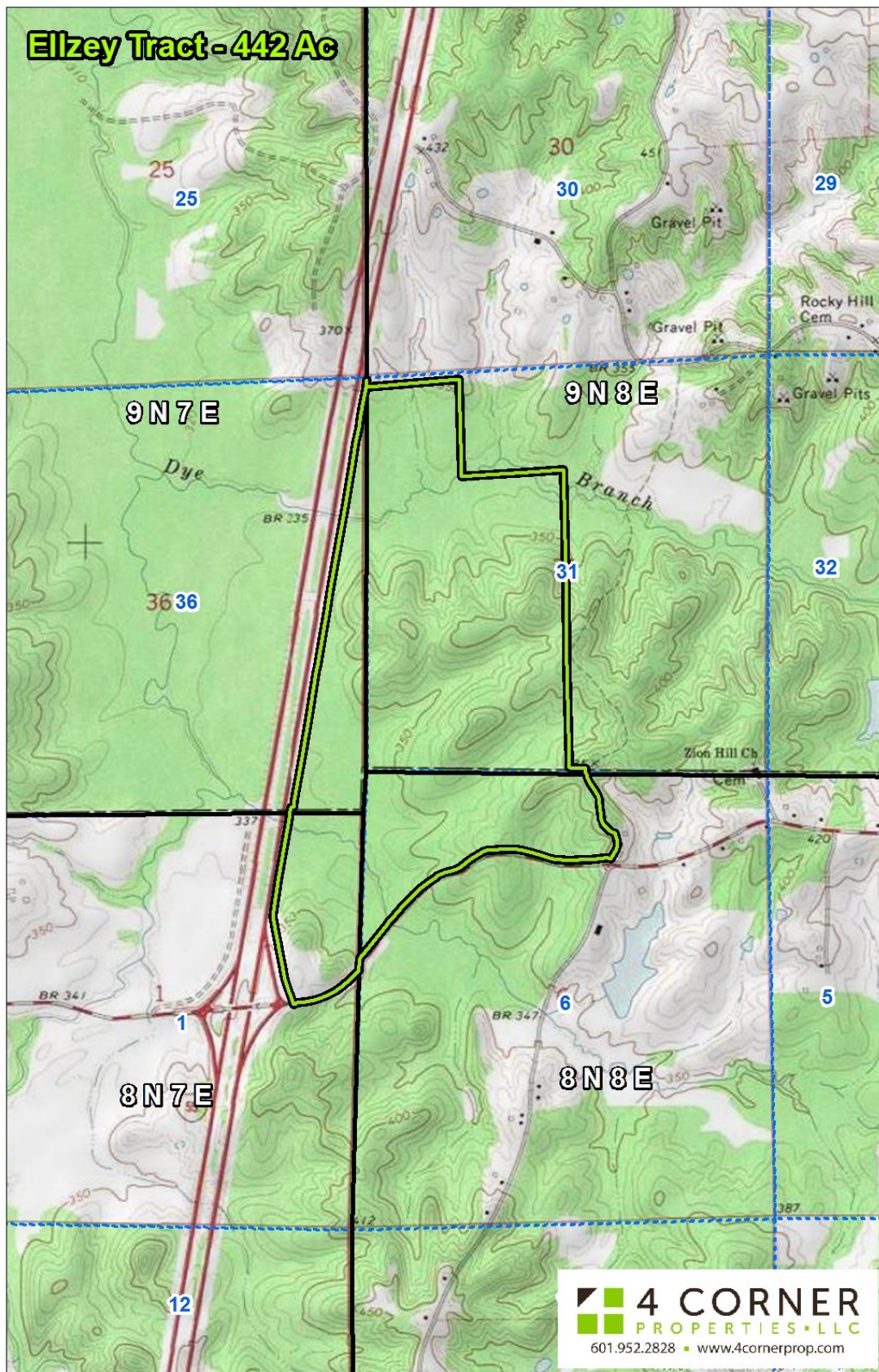


Clint Stewart, REALTOR® · cbstewart@4cornerprop.com · 601.757.8787 cell

Elzey Tract - 442 Ac



Clint Stewart, REALTOR® · cbstewart@4cornerprop.com · 601.757.8787 cell



Topo Map