

# Laguna Island Ranch

**40.02± acres**  
LEMOORE, CALIFORNIA

SALE PRICE:  
**\$3,200,000**



Enjoy the best of both worlds; entertain in this elegant 5,675± square foot home after spending the day riding your favorite horses in this immaculate horse facility.

The 40 acre Laguna Island Ranch is located in the heart of the San Joaquin Valley, approximately 35 minutes south of Fresno, California. This unique river bottom area is known for its concentration of mature trees, rich agriculture and abundance of water. The Laguna Island Ranch was created with the highest level of craftsmanship and attention to detail in its design.

EXCLUSIVELY PRESENTED BY:



**PEARSON  
REALTY**  
AGRICULTURAL PROPERTIES  
*A Tradition in Trust Since 1919*

[www.pearsonrealty.com](http://www.pearsonrealty.com)  
CA BRE# 00020875



# Laguna Island Ranch

**40.02± acres**  
LEMOORE, CALIFORNIA



## PROPERTY PHOTOS



# Laguna Island Ranch

**40.02± acres**  
LEMOORE, CALIFORNIA



## OVERVIEW AERIAL



## ADDITIONAL FACILITY FEATURES

The outstanding turn-key horse facility includes a 21,472± square foot horse barn which features 8 box stalls with runs, 8 mare motel stalls, covered saddling/work area, 2 wash racks, an office, tack room, a feed/vet room and a utility room/restroom. The facility also includes a 42,000± square foot covered arena, round pens, cutting pen, turnout pen, hot



walker, exercise track and miles of quality metal fencing. Other support buildings consist of a caretaker home, a hay barn/trailer storage building, and a shop/equipment storage building. A Pro Cutter mechanical cow, cattle loading and handling equipment and a California Livestock brand registration are also included with the facility.



# Laguna Island Ranch

**40.02± acres**  
LEMOORE, CALIFORNIA



## HORSE FACILITY SITE MAP



# Laguna Island Ranch

**40.02± acres**  
LEMOORE, CALIFORNIA



## RESIDENCE

The elegant 5,675± square foot, two-story residence is complemented by beautiful landscaping and a gated entrance. The 4-bedroom, 4-full and 2-half bath home includes twin master suites and high vaulted ceilings, accented with chandeliers and recessed lighting. Stylish ceiling fans



are appropriately placed throughout the home and above the covered horseshoe shaped porch, lined with bold pillars. The ornamental wrought iron handrail on the staircase contributes to the look and feel of a Mediterranean estate. The home was meticulously wired for security, music and technology.



## RESIDENCE (CONT.)



The wide open kitchen has extensive granite counter tops and custom cabinetry. Have fun cooking on the top-of-the line stainless steel commercial grade appliances. Dine in the elegant formal dining room or informally in the great room



with a magnificent fireplace. The upstairs includes his and hers offices with a library, loft and balcony that overlooks the pasture and horse facility. Other notable features include the attached guest house, gym and spacious utility room.



# Laguna Island Ranch

**40.02± acres**  
LEMOORE, CALIFORNIA



## LOCATION

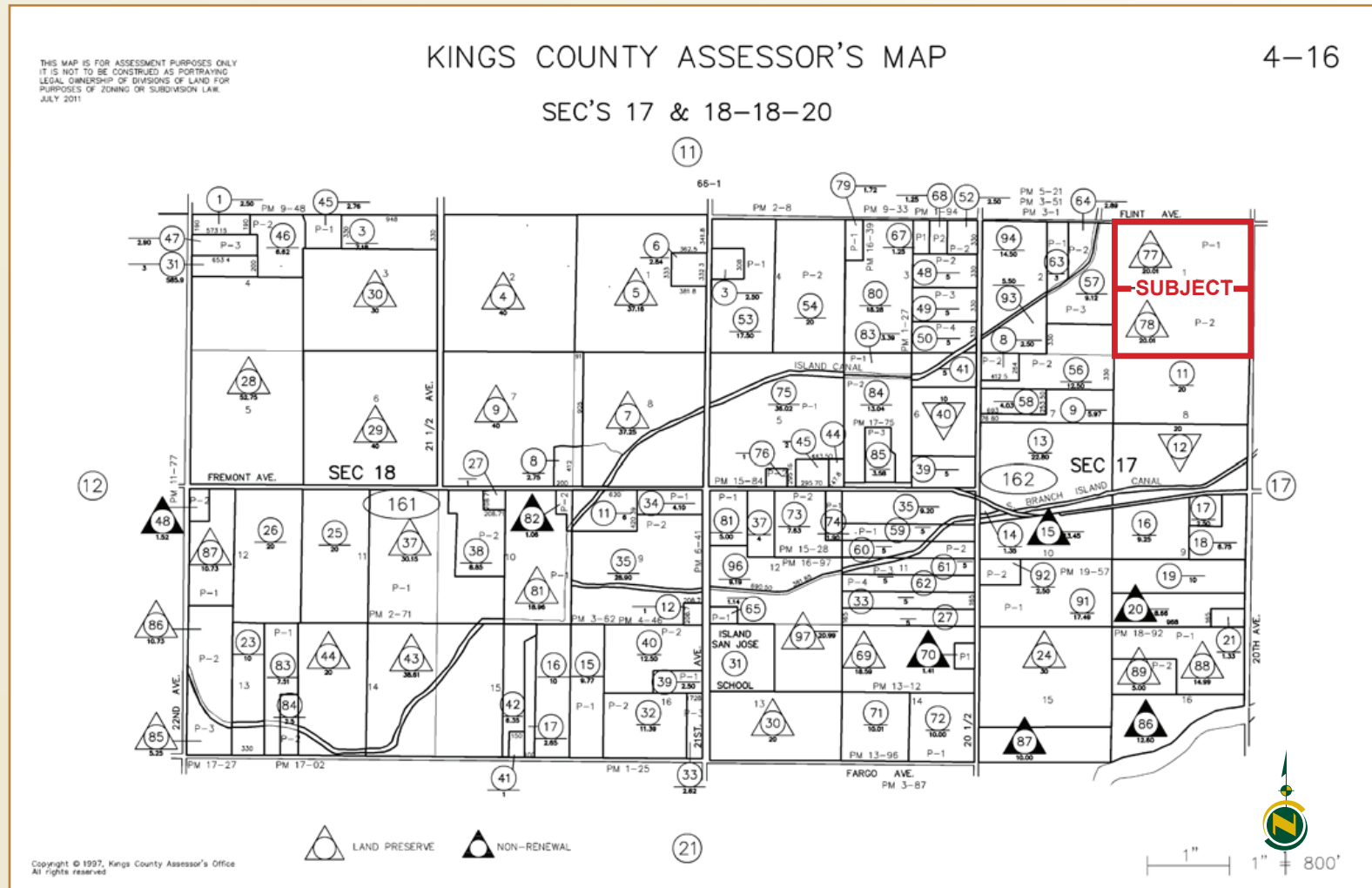
The property is located on the southwest corner of Flint and 20th Avenues. | Address: 20175 Flint Avenue, Lemoore, California 93245.



### LEGAL

40.02± assessed acres located in the NE ¼ of the NE ¼ of Section 17, T18S, R20E, M.D.B.&M.

Kings County APN: 004-162-077 & 078.



## WATER AND SOILS

### Water:

Laguna Irrigation District

(2) 5 HP submersible irrigation pumps and wells

(2) 3 HP booster pumps

(1) Water fill station

(1) Domestic submersible pump and well

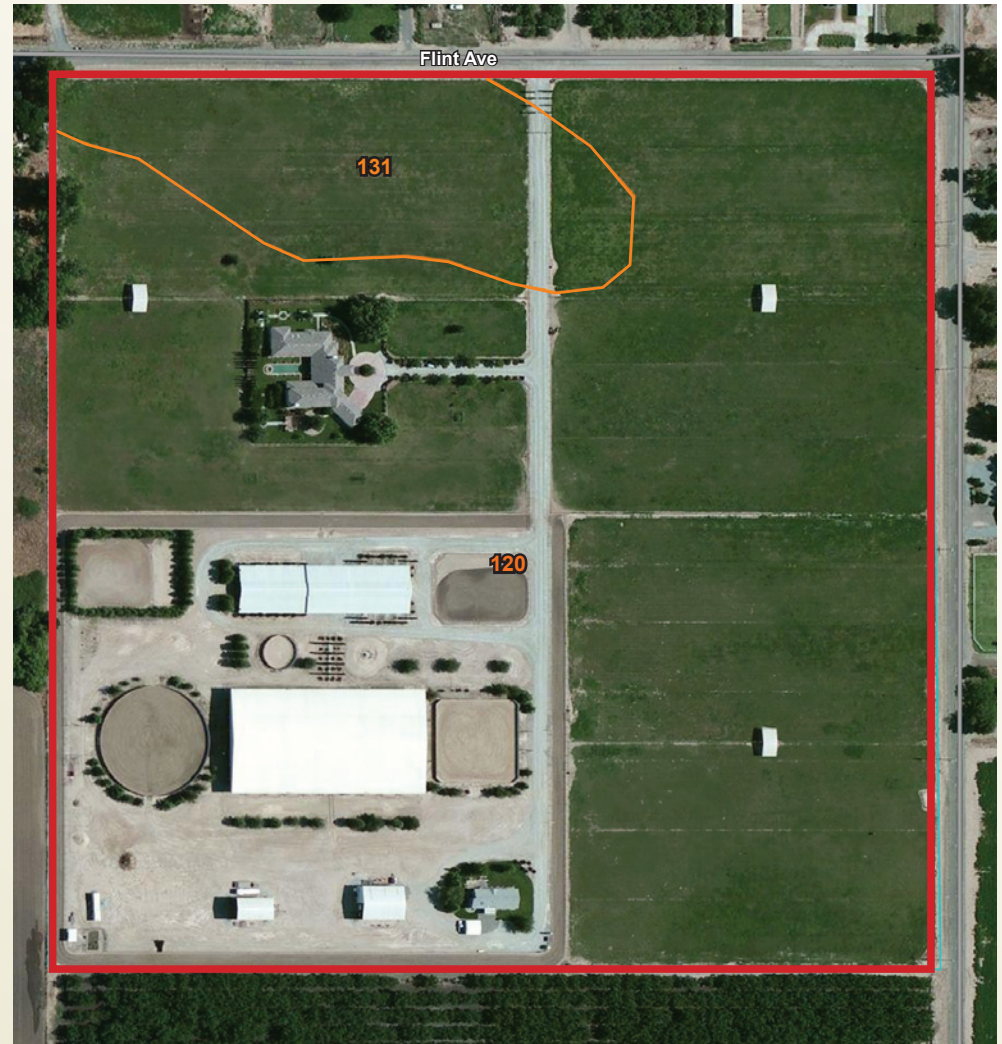
Flood irrigation



### Soils:

#### Map Unit Legend

Kings County, California (CA031)	
Map Unit Symbol	Map Unit Name
120	Grangeville fine sandy loam, partially drained
131	Kimberlina fine sandy loam, sandy substratum



Map Scale: 1:2,170 if printed on B portrait (11" x 17") sheet.  
 0 30 60 120 180 Meters  
 0 100 200 400 600 Feet  
 Map projection: Web Mercator Corner coordinates: WGS84 Edge tics: UTM Zone 11N WGS84



# Laguna Island Ranch

**40.02± acres**  
LEMOORE, CALIFORNIA



## PROPERTY PHOTOS



# Laguna Island Ranch

**40.02± acres**  
LEMOORE, CALIFORNIA



[www.pearsonrealty.com](http://www.pearsonrealty.com)

CA BRE# 00020875

We believe the information contained herein to be correct. It is obtained from sources which we regard as reliable, but we assume no liability for errors or omissions.

Policy on cooperation: All real estate licensees are invited to offer this property to prospective buyers. Do not offer to other agents without prior approval.



## FRESNO

7480 N. Palm Ave.  
Suite 101  
Fresno, CA 93711  
559.432.6200

## VISALIA

3447 S. Demaree St.  
Visalia, CA 93277  
559.732.7300

## BAKERSFIELD

1801 Oak St.  
Suite 119  
Bakersfield, CA 93301  
661.334.2777