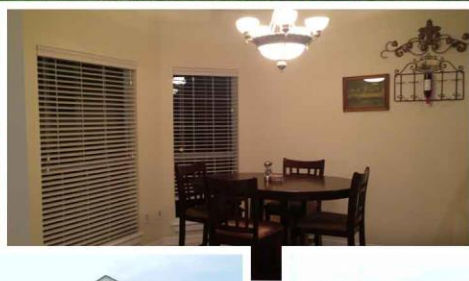




LAKE RETREAT IN MIDWAY ISD
McLennan County



LEGACYAPPROVED.COM

5984 N. STATE HWY 6 WACO, TX 76712

254.848.5263 254.848.2921 FAX

IT'S NOT JUST AN **INVESTMENT**,
IT'S A **BETTER WAY OF LIFE!**



PROPERTY INFORMATION **OVERVIEW**

Address.....	3021 Pinto Loop, Waco, TX 76706
Price.....	\$154,900
Topo.....	Rolling
Year Built.....	2005
Sq. Ft.....	1,593 Sq.Ft.
Bedrooms.....	3
Bathrooms.....	2
Floors.....	Tile, Wood
Roof.....	Composition
Heating/Cooling.....	Central H/AC
School District.....	Midway ISD

Directions: I35 S from Waco to exit 325, left on overpass to moonlight drive, turn left on Moonlight to Surrey Ridge, left on Surrey Ridge to Clydesdale, right on Clydale, left on Pinto Loop to property on left.

All information is per owner/other sources and is deemed correct, but is not guaranteed.

LOCATION MAP:



FOR MORE INFORMATION ON THIS LISTING, PLEASE CONTACT

KELLI BARTON, REALTOR®
LAND SALES SPECIALIST

CELL: 254-723-4222

KELLI@LEGACYAPPROVED.COM