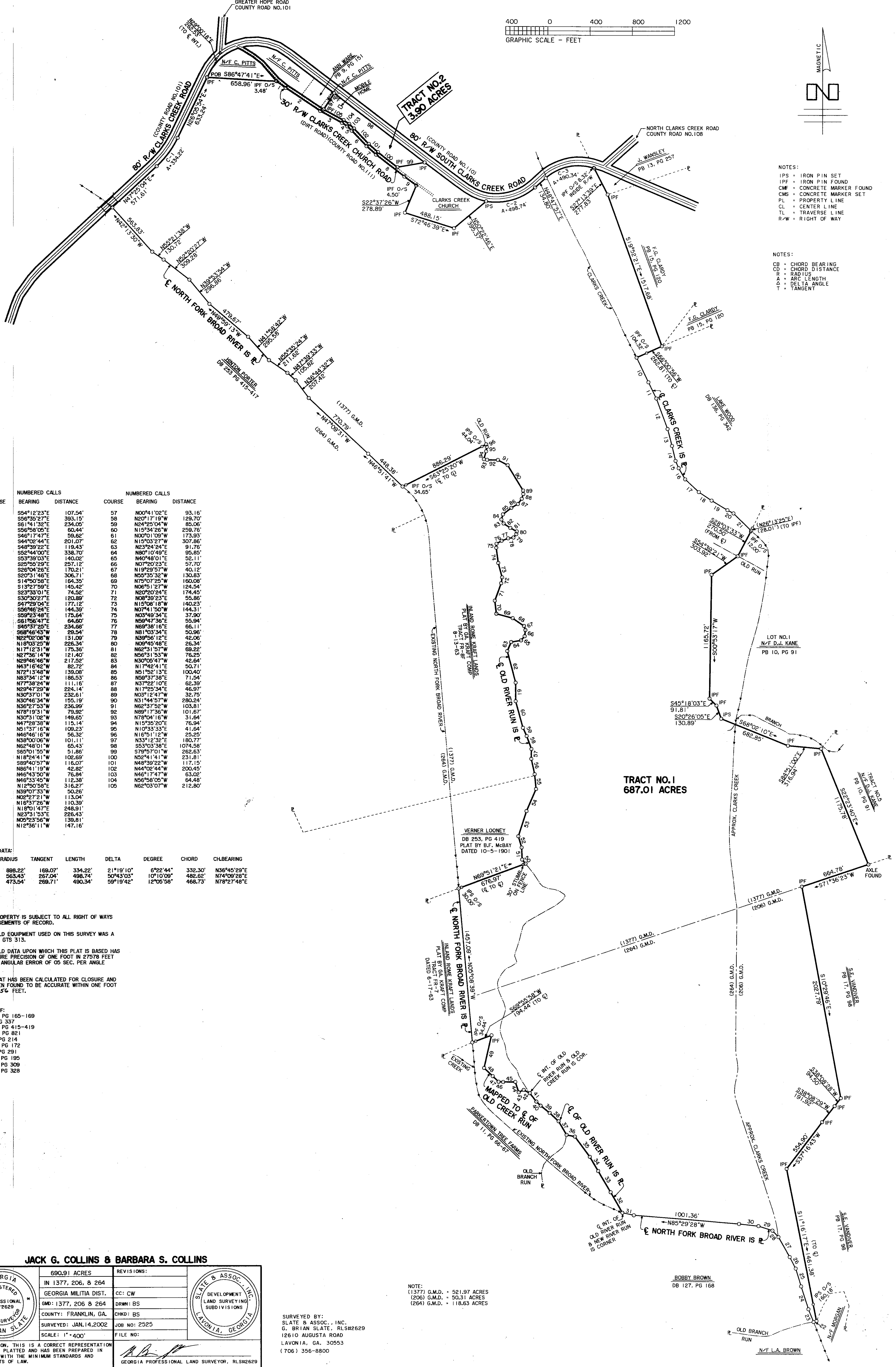


- NOTES:
- IPS = IRON PIN SET
 - IPF = IRON PIN FOUND
 - CMF = CONCRETE MARKER FOUND
 - CMS = CONCRETE MARKER SET
 - PL = PROPERTY LINE
 - CL = CENTER LINE
 - TL = TRAVERSE LINE
 - R/W = RIGHT OF WAY
- NOTES:
- CB = CHORD BEARING
 - CD = CHORD DISTANCE
 - R = RADIUS
 - A = ARC LENGTH
 - Δ = DELTA ANGLE
 - T = TANGENT



NUMBERED CALLS			NUMBERED CALLS		
COURSE	BEARING	DISTANCE	COURSE	BEARING	DISTANCE
1	S54°12'23"E	107.54'	57	N00°41'02"E	93.16'
2	S56°35'27"E	393.15'	58	N20°17'19"W	129.70'
3	S61°41'32"E	234.05'	59	N24°25'04"W	85.06'
4	S56°38'05"E	60.44'	60	N15°34'26"W	259.76'
5	S46°17'47"E	59.62'	61	N00°01'03"W	173.93'
6	S44°02'44"E	201.07'	62	N15°03'27"W	307.86'
7	S48°39'22"E	119.43'	63	N23°24'24"E	91.76'
8	S52°44'00"E	338.70'	64	N80°10'49"E	95.85'
9	S53°39'03"E	140.02'	65	N40°48'01"E	52.11'
10	S25°55'29"E	257.12'	66	N07°20'23"E	57.70'
11	S26°04'28"E	170.21'	67	N19°29'57"W	40.12'
12	S20°31'46"E	306.71'	68	N65°35'32"W	130.63'
13	S14°50'58"E	164.35'	69	N75°07'25"W	160.08'
14	S13°27'59"E	145.42'	70	N06°51'27"W	124.54'
15	S23°53'01"E	74.52'	71	N20°20'24"E	174.45'
16	S30°30'27"E	120.89'	72	N08°39'23"E	55.86'
17	S47°29'04"E	177.12'	73	N15°08'18"W	140.23'
18	S56°48'29"E	144.39'	74	N07°41'50"W	144.31'
19	S69°23'48"E	175.64'	75	N03°49'34"E	37.90'
20	S61°56'47"E	64.60'	76	N59°47'36"E	55.94'
21	S40°37'25"E	234.68'	77	N69°38'16"E	66.11'
22	S68°46'43"W	29.54'	78	N81°03'54"E	50.86'
23	N22°02'08"W	131.09'	79	N39°56'12"E	42.06'
24	N18°03'25"W	226.34'	80	N09°45'48"E	26.34'
25	N17°12'31"W	175.36'	81	N62°51'57"W	69.22'
26	N27°56'14"W	121.40'	82	N66°31'53"W	76.25'
27	N29°46'46"W	217.52'	83	N30°05'47"W	42.64'
28	N43°16'42"W	82.72'	84	N17°42'41"E	50.71'
29	N12°13'48"W	139.08'	85	N51°52'13"E	100.40'
30	N83°34'12"W	186.53'	86	N59°37'38"E	71.54'
31	N77°38'24"W	111.16'	87	N37°22'10"E	62.39'
32	N29°47'29"W	224.14'	88	N17°25'54"E	46.97'
33	N30°37'01"W	132.61'	89	N05°12'47"W	32.75'
34	N30°46'34"W	155.19'	90	N31°44'57"W	280.24'
35	N36°27'33"W	236.99'	91	N62°37'52"W	103.81'
36	N78°19'31"W	73.92'	92	N89°17'36"W	101.67'
37	N50°31'02"W	149.65'	93	N78°04'16"W	31.64'
38	N47°28'38"W	115.14'	94	N15°35'20"E	76.94'
39	N51°37'16"W	109.23'	95	N10°33'33"E	41.64'
40	N46°46'16"W	56.32'	96	N16°51'12"W	25.25'
41	N38°00'06"W	101.11'	97	N33°12'32"E	180.77'
42	N62°48'01"W	65.43'	98	S53°03'38"E	1074.58'
43	S65°01'35"W	51.86'	99	S78°57'01"W	282.63'
44	N18°24'41"W	102.69'	100	N52°14'41"W	231.81'
45	S89°40'57"W	116.07'	101	N48°39'22"W	117.15'
46	N68°41'19"W	124.82'	102	N44°02'44"W	200.45'
47	N46°43'50"W	76.84'	103	N46°17'47"W	63.02'
48	N46°33'45"W	112.38'	104	N56°58'05"W	64.48'
49	N12°30'38"E	316.27'	105	N62°03'07"W	212.80'
50	N39°07'33"W	50.26'			
51	N02°27'21"W	113.04'			
52	N16°37'26"W	110.39'			
53	N18°01'47"E	248.91'			
54	N23°31'53"E	226.43'			
55	N05°23'56"W	139.81'			
56	N12°36'11"W	147.16'			

CURVE DATA:

CURVE	RADIUS	TANGENT	LENGTH	DELTA	DEGREE	CHORD	CH. BEARING
1	898.22'	169.07'	334.22'	21°19'10"	6°22'44"	332.30'	N36°45'29"E
2	563.43'	267.04'	498.74'	50°43'03"	10°10'09"	482.62'	N74°09'28"E
3	473.54'	269.71'	490.34'	59°19'42"	12°05'58"	468.73'	N78°27'48"E

THIS PROPERTY IS SUBJECT TO ALL RIGHT OF WAYS AND EASEMENTS OF RECORD.

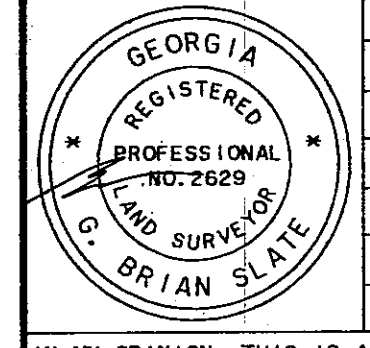
THE FIELD EQUIPMENT USED ON THIS SURVEY WAS A TOPCON GTS 313.

THE FIELD DATA UPON WHICH THIS PLAT IS BASED HAS A CLOSURE PRECISION OF ONE FOOT IN 27578 FEET AND AN ANGULAR ERROR OF 05 SEC. PER ANGLE POINT.

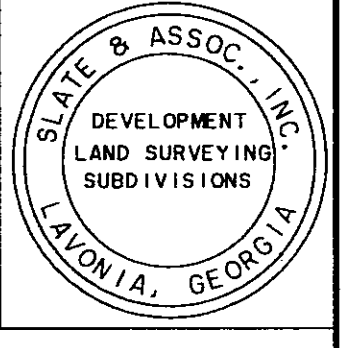
THIS PLAT HAS BEEN CALCULATED FOR CLOSURE AND HAS BEEN FOUND TO BE ACCURATE WITHIN ONE FOOT IN 96635.6 FEET.

PLAT REF:
 DB 314, PG 165-169
 PB 9, PG 337
 DB 253, PG 415-419
 DB 282, PG 821
 PB 12, PG 214
 DB 260, PG 172
 PB 17, PG 291
 DB 277, PG 195
 DB 292, PG 309
 DB 248, PG 328

JACK G. COLLINS & BARBARA S. COLLINS



690.91 ACRES	REVISIONS:
IN 1377, 206, & 264	
GEORGIA MILITIA DIST.	CC: CW
GMD: 1377, 206 & 264	DRWN: BS
COUNTY: FRANKLIN, GA.	CHKD: BS
SURVEYED: JAN. 14, 2002	JOB NO: 2525
SCALE: 1" = 400'	FILE NO:



NOTE:
 (1377) G.M.D. = 521.97 ACRES
 (206) G.M.D. = 50.31 ACRES
 (264) G.M.D. = 118.63 ACRES

SURVEYED BY:
 SLATE & ASSOC., INC.
 G. BRIAN SLATE, RLS#2629
 12610 AUGUSTA ROAD
 LAVONIA, GA. 30553
 (706) 356-8800

IN MY OPINION, THIS IS A CORRECT REPRESENTATION OF THE LAND PLATTED AND HAS BEEN PREPARED IN CONFORMITY WITH THE MINIMUM STANDARDS AND REQUIREMENTS OF LAW.

GEORGIA PROFESSIONAL LAND SURVEYOR, RLS#2629