

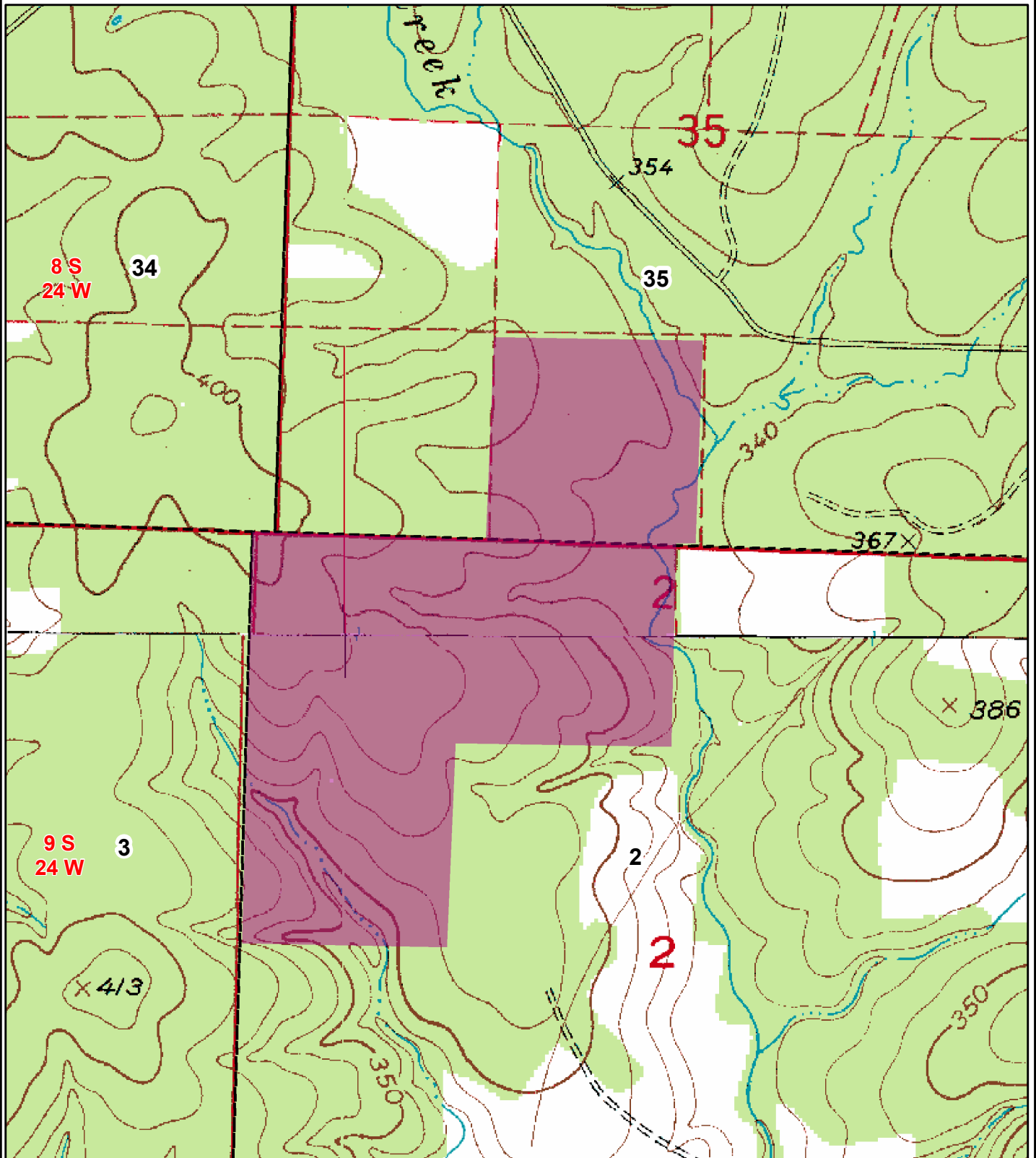
NOTICE OF LAND SALE

"New Road Tract"

SE¼ of SW¼, Sec. 35, T8S, R24W; Fr. N½ of NW¼, and SW¼ of NW¼, Sec. 2, T9S, R24W

Pike County, Arkansas

Containing 156.13 acres, more or less



0 0.125 0.25
Miles



Created: September, 2013
Drawn By: JDT