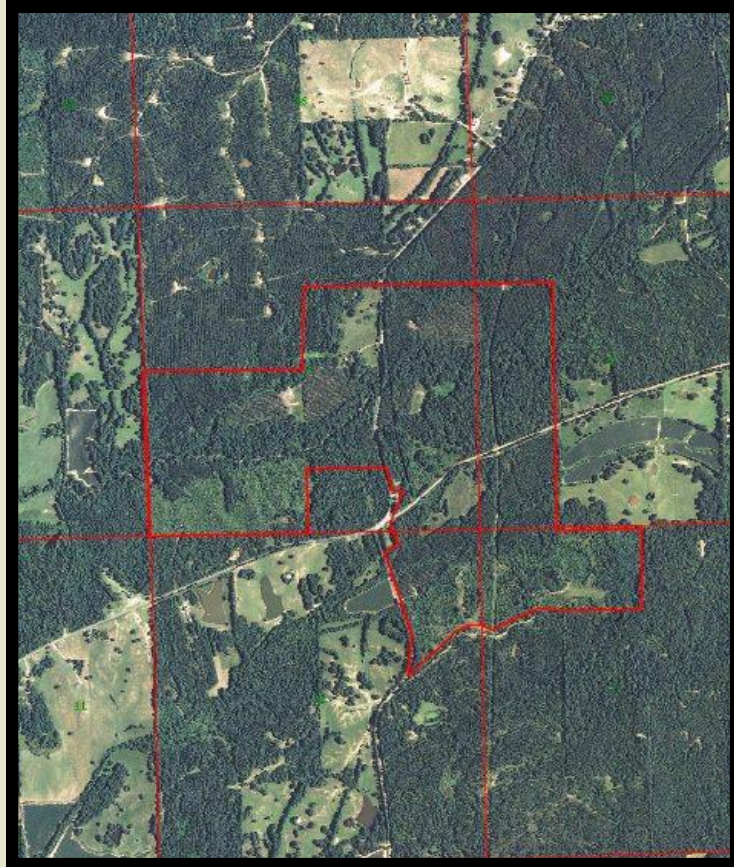




Harland's Creek

620 Acres +/-
Holmes County, MS



620 acres located in the Coxberg community of Holmes County only 48 miles from Madison.

The property includes a 3 bedroom, 2 bath house with a 2 car garage, a covered shed and outbuildings. Timber consists of mixed age CRP pines and hardwood bottoms along Harland Creek.

This property has not been hunted in several years and is in an area known to produce trophy bucks and long bearded toms.

\$1,627,500.00

CONTACT:
J. PARKER SARTAIN
601.506.2398
psartain@sartainsheritage.com

Sartain's Heritage Properties
106 First Choice Drive
Madison, MS 39110
Phone: 601-856-2720
Fax: 601-853-6765
www.SartainsHeritage.com

