

- Common Land Unit**
 Cropland Non-cropland
 Conservation Reserve Program
- Wetland Determination Identifiers**
● Restricted Use
▼ Limited Restrictions
■ Exempt from Conservation
 Compliance Provisions
- Tract Boundary Section Line **2012 NAIP Imagery**

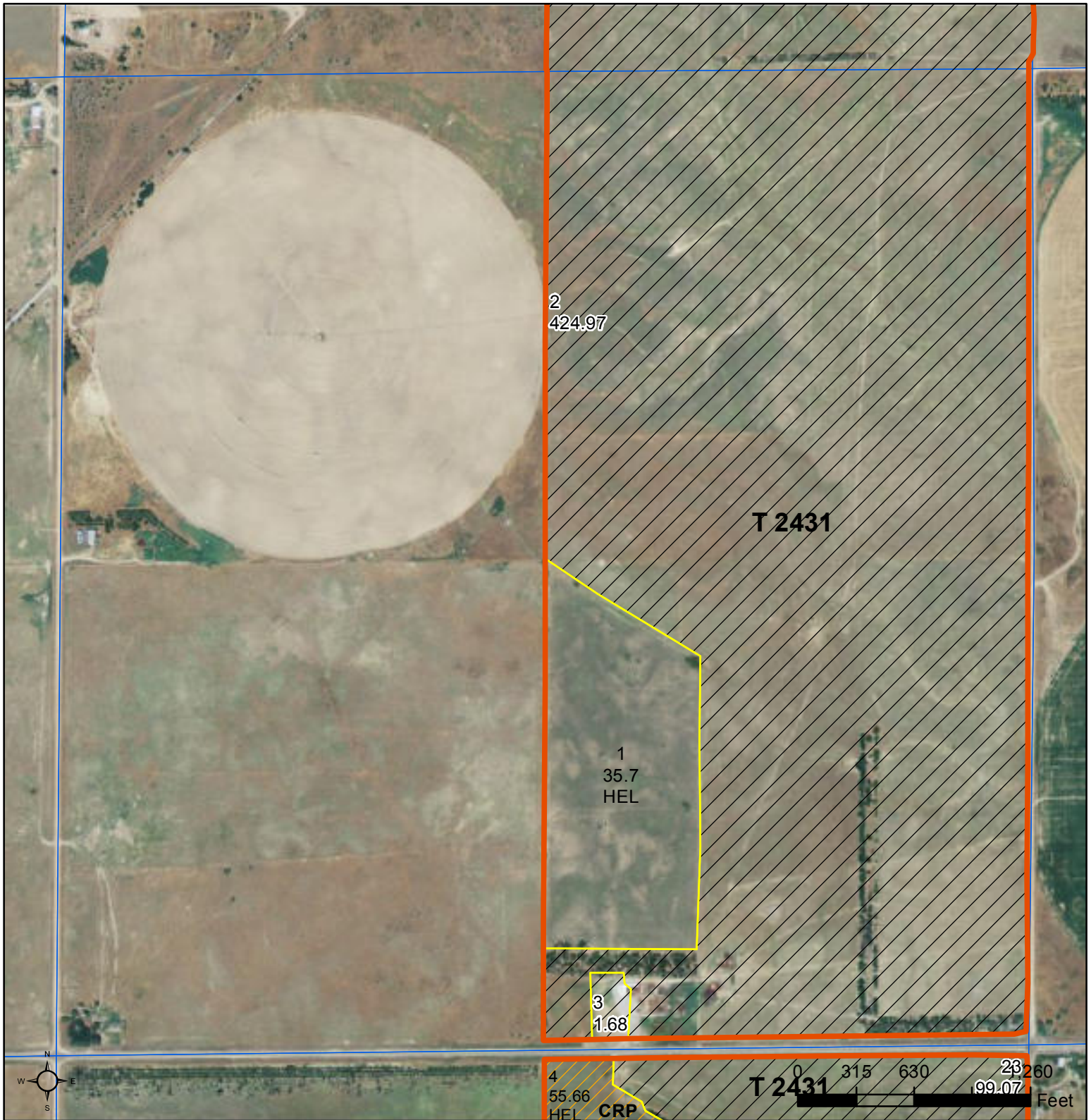
33-31-18


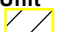

Program Year




Map Created October 31, 2013



Farm 3006
Tract 2431

United States Department of Agriculture (USDA) Farm Service Agency (FSA) maps are for FSA Program administration only. This map does not represent a legal survey or reflect actual ownership; rather it depicts the information provided directly from the producer and/or National Agricultural Imagery Program (NAIP) imagery. The producer accepts the data 'as is' and assumes all risks associated with its use. USDA-FSA assumes no responsibility for actual or consequential damage incurred as a result of any user's reliance on this data outside FSA Programs. Wetland identifiers do not represent the size, shape, or specific determination of the area. Refer to your original determination (CPA-026 and attached maps) for exact boundaries and determinations or contact USDA Natural Resources Conservation Service (NRCS).



- Common Land Unit**
-  Cropland
 -  Non-cropland
 -  Conservation Reserve Program

- Wetland Determination Identifiers**
-  Restricted Use
 -  Limited Restrictions
 -  Exempt from Conservation Compliance Provisions

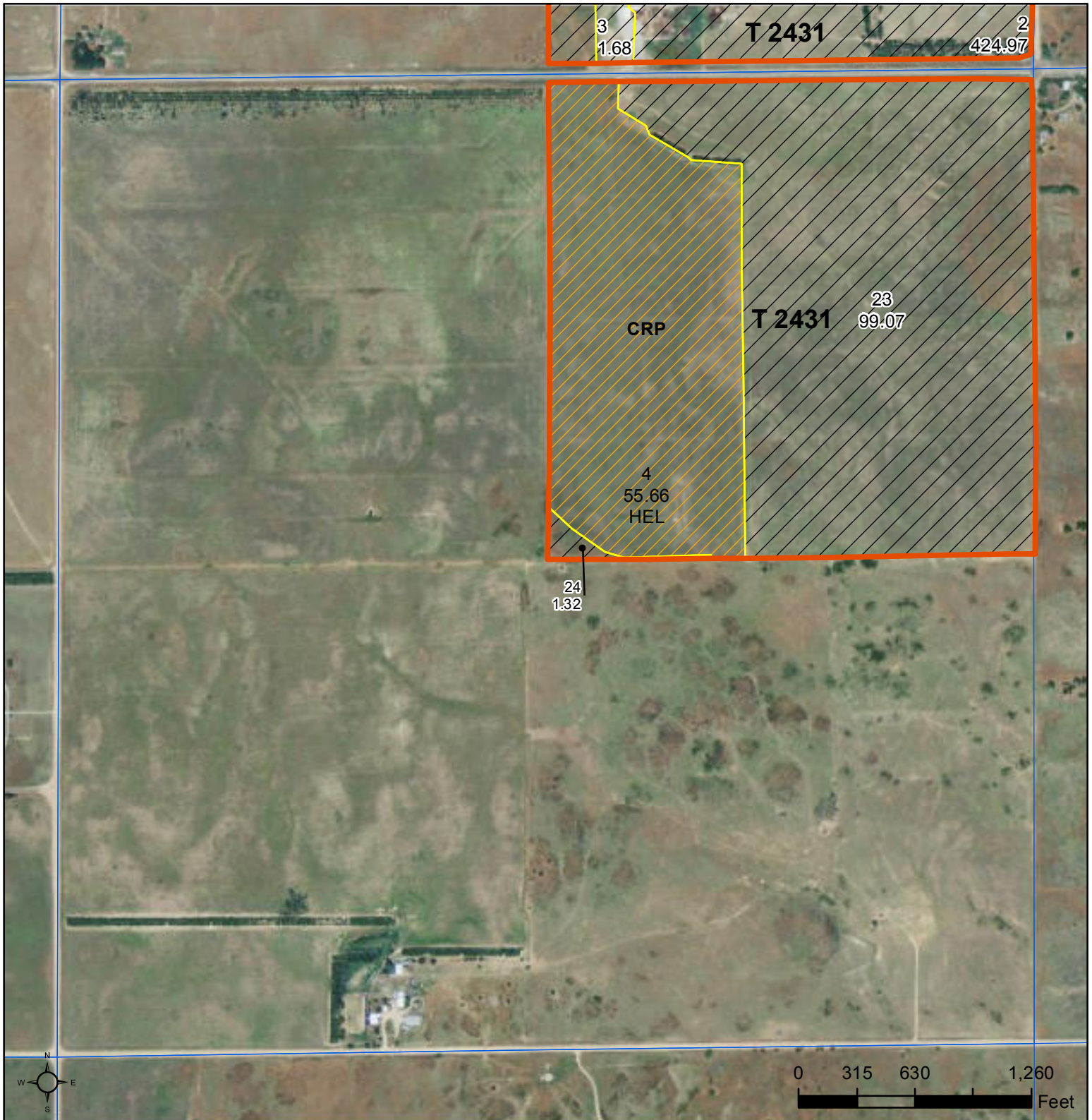
-  Tract Boundary
  Section Line
 2012 NAIP Imagery

4-32-18

Program Year

Map Created October 31, 2013

**Farm 3006
Tract 2431**



- Common Land Unit**
 Cropland Non-cropland
 Conservation Reserve Program

- Wetland Determination Identifiers**
● Restricted Use
▼ Limited Restrictions
■ Exempt from Conservation
 Tract Boundary Section Line **2012 NAIP Imagery**

9-32-18

Program Year

Map Created October 31, 2013

Farm 3006
Tract 2431

United States Department of Agriculture (USDA) Farm Service Agency (FSA) maps are for FSA Program administration only. This map does not represent a legal survey or reflect actual ownership; rather it depicts the information provided directly from the producer and/or National Agricultural Imagery Program (NAIP) imagery. The producer accepts the data 'as is' and assumes all risks associated with its use. USDA-FSA assumes no responsibility for actual or consequential damage incurred as a result of any user's reliance on this data outside FSA Programs. Wetland identifiers do not represent the size, shape, or specific determination of the area. Refer to your original determination (CPA-026 and attached maps) for exact boundaries and determinations or contact USDA Natural Resources Conservation Service (NRCS).