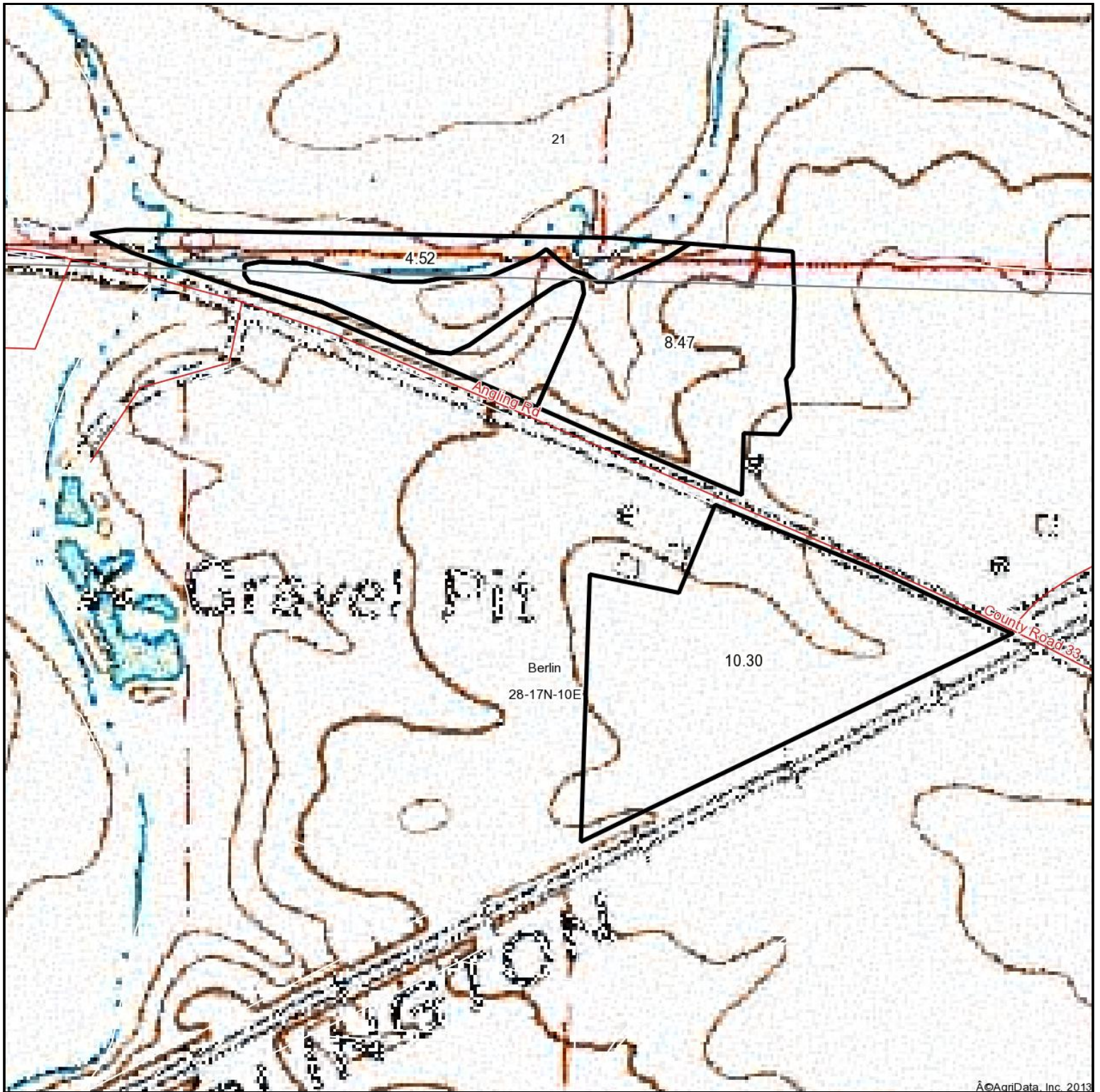


# Topography Map



©AgriData, Inc. 2013



Capital  
Agricultural  
Property  
Services, Inc.

Maps provided by:



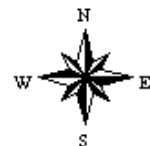
©AgriData, Inc. 2012

[www.AgriDataInc.com](http://www.AgriDataInc.com)

**28-17N-10E**  
**Bureau County**  
**Illinois**

map center: 41° 26' 6.2, 89° 20' 43.94

scale: 4123



9/11/2013

Field borders provided by Farm Service Agency as of 5/21/2008. Aerial photography provided by Aerial Photography Field Office.