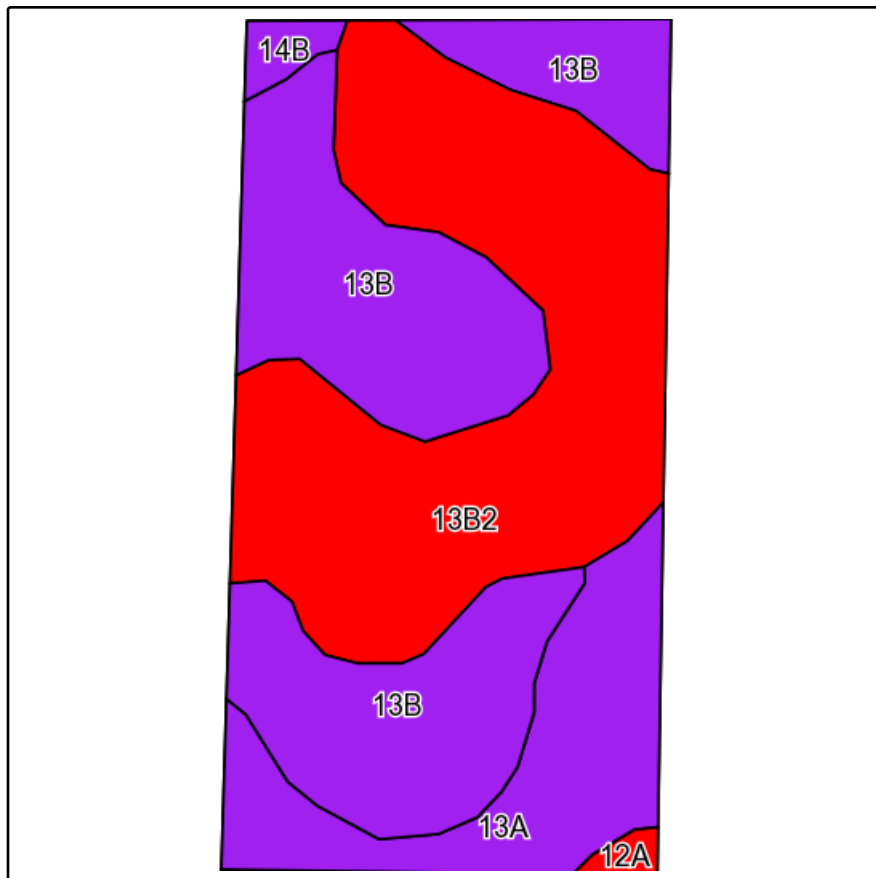
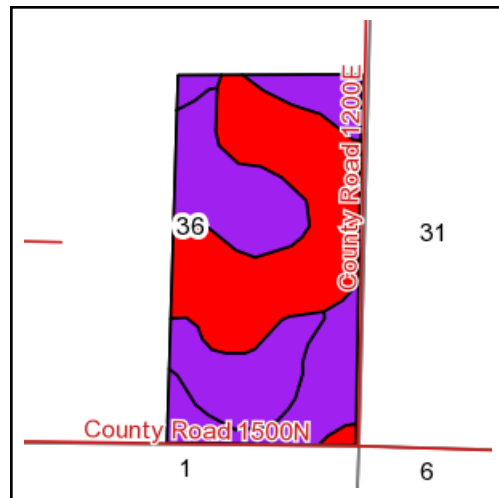


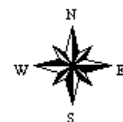
Soils Map



Field borders provided by Farm Service Agency as of 5/21/2008.
Soils data provided by University of Illinois at Champaign-Urbana.



State: **Illinois**
County: **Wayne**
Location: **36-1N-6E**
Township: **Indian Prairie**
Acres: **20.68**
Date: **8/27/2013**



Maps provided by:



©AgriData, Inc 2013
www.AgriDataInc.com

Code	Soil Description	Acres	Percent of field	Il. State Productivity Index Legend	Corn Bu/A	Soybeans Bu/A	Wheat Bu/A	Crop productivity index for optimum management
**13B2	Bluford silt loam, 2 to 5 percent slopes, eroded	8.85	42.8%		**129	**42	**52	**96
**13B	Bluford silt loam, 2 to 5 percent slopes	8.10	39.2%		**135	**44	**54	**100
13A	Bluford silt loam, 0 to 2 percent slopes	3.30	16.0%		136	44	55	101
**14B	Ava silt loam, 2 to 5 percent slopes	0.28	1.4%		**134	**44	**54	**99
12A	Wynoose silt loam, 0 to 2 percent slopes	0.15	0.7%		128	42	51	97
Weighted Average					132.5	43.1	53.3	98.4

Table: Optimum Crop Productivity Ratings for Illinois Soil by K.R. Olson and J.M. Lang, Office of Research, ACES, University of Illinois at Champaign-Urbana. Version: 1/2/2012 Amended Table S2 B811 (Updated 1/10/2012)
Crop yields and productivity indices for optimum management (B811) are maintained at the following NRES web site: <http://soilproductivity.nres.illinois.edu/>

** Indexes adjusted for slope and erosion according to Bulletin 811 Table S3